

## **SUPERCLASSICA SCB**

### INFO TECH

My beige is on fire!

Lo studio di un colore come punto di partenza, il beige. Caldo e naturale, interpretato attraverso una pietra in otto diverse finiture e in sette formati. Una raccolta di elementi studiati appositamente per essere abbinati tra loro, per dare movimento alle superfici rimanendo in un contesto contemporaneo. Assume interpretazioni diverse: lucida, naturale, bocciardata, incisa, anticata, strutturata, Superclassica raccoglie tutto questo e molto altro. Peggy in 60x120 con finitura lucida, e due decori da rivestimento, in 15x15 e in 10x40, in bianco e verde, quest'ultimo super brillante che all'interno della collezione crea il binomio naturale-artificiale perfetto.

Superclassica diviene così un ventaglio di possibilità, ideale sia per progetti residenziali che commerciali, interni ed esterni.

Il classico non sbaglia mai, e il nostro è super.

My beige is on fire!

The starting point was the study of the beige color. This warm and natural shade was interpreted through a stone look in eight finishes and seven sizes. Altogether, these elements were carefully designed to be mixed and matched with each other in a contemporary framework, while providing movement to the surfaces. It takes on different interpretations: polished, natural, bush-hammered, engraved, antiqued, structured - Superclassica brings together all these aspects and much more.

The collection includes Peggy - a 60x120cm 24"x48" tile with a glossy finish - and two wall decors presented in two sizes - 15x15cm 6"x6" and 10x40cm 4"x16"- and available in two colors: white and a super bright green, which provides a perfect natural-artificial balance to the whole collection. Superclassica thus became an array of opportunities, ideal for both residential and commercial spaces, indoor and outdoor projects.

Classic never get wrong, and ours is super.



## TECHNICAL DETAILS

### SUPERCLASSICA SCB

TECHNOLOGY PORCELLANATO DIGITALE HD AD IMPASTO COLORATO - HD DIGITAL COLORED BODY PORCELAIN

FINISH RETTIFICATO - RECTIFIED

NATURAL / FLAMED / HAMMERED / CRACK / GROOVED / CHEVRON / POLISHED / PEGGY

PEGGY FINITURA A BASE DI PASTA DI VETRO PIÙ TRATTAMENTO PROTETTIVO SUPERFICIALE  
GLASS PASTE FINISHING WITH ADDITIONAL PROTECTIVE TREATMENT ON SURFACE.

THICKNESS 9 MM

### PLI - PATH

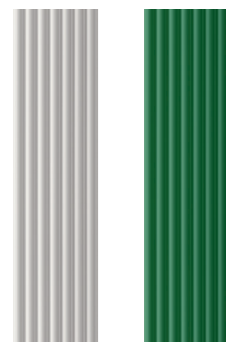
TECHNOLOGY MONOCOTTURA IN PASTA BIANCA - WHITE BODY SINGLE-FIRED WALL TILE

FINISH LUCIDO - LUX

PLI THICKNESS 8 MM

PATH THICKNESS 10 MM

BIANCO VERDE



BIANCO VERDE



## SCB SURFACES

NATURAL

FLAMED

HAMMERED

CRACK

GROOVED

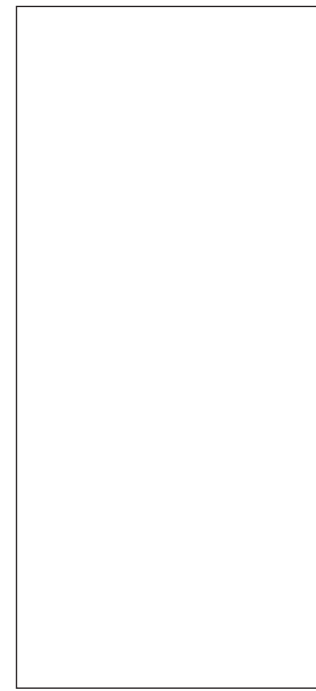
CHEVRON

POLISHED

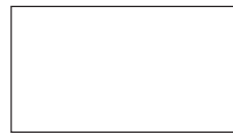
PEGGY



## SCB SIZES



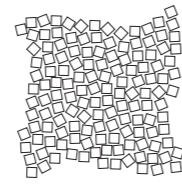
80X180 32"x71"  
GRAPHIC NR. 8 NATURAL



30X60 12"x24"  
GRAPHIC NR. 40 NATURAL



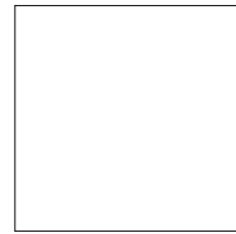
60X120 24"x48"  
GRAPHIC NR. 15 NATURAL  
GRAPHIC NR. 15 POLISHED  
GRAPHIC NR. 4 FLAMED  
GRAPHIC NR. 30 CRACK  
GRAPHIC NR. 6 GROOVED  
GRAPHIC NR. 11 HAMMERED  
GRAPHIC NR. 5 PEGGY



MOSAIC 1,8X1,8  
NET 30X30 12"x12"



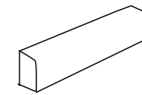
7,5X120 3"x48"  
GRAPHIC NR. 120 NATURAL



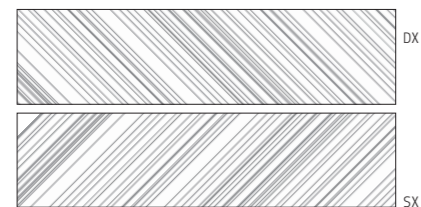
60X60 24"x24"  
GRAPHIC NR. 30 CRACK



7,5X60 3"x24"  
GRAPHIC NR.>250 MIX



SKIRTING 7,5X120 3"x48"



CHEVRON 20X80 8"x32"  
GRAPHIC NR. 46

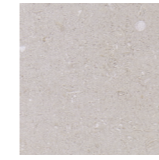
IN OGNI SCATOLA CI SONO 3 PEZZI DESTRI E 3 PZ SINISTRI.  
IN EVERY BOX THERE ARE 3 RIGHT PIECES AND 3 LEFT PIECES.

## SCB GROUTS

| SCB               | colori stucchi consigliati / advised grouts colors |
|-------------------|--|
| SUPERCLASSICA SCB | Kerakoll 06  |
| PATH VERDE        | Kerakoll 18  |
| PATH BIANCO       | Kerakoll 02  |
| PLI VERDE         | Kerakoll 18  |
| PLI BIANCO        | Kerakoll 02  |

## SCB SIZES AND TEXTURES

NATURAL



80X180  
60X120  
30X60  
7,5X120

POLISHED



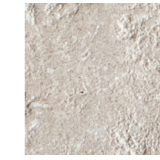
60X120

FLAMED



60X120

CRACK



60X120  
60X60

GROOVED



60X120

HAMMERED



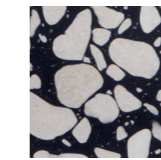
60X120

CHEVRON



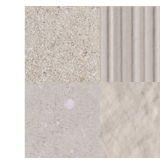
20X80

PEGGY



60X120

\*MIX



7,5X60  
MOSAIC 30X30  
\*HAMMERED/GROOVED  
NATURAL/FLAMED

## SCB CODES

| SIZE           | Natural | Polished | Flamed  | Crack   | Grooved | Hammered | Chevron | Peggy   | Mix     |
|----------------|---------|----------|---------|---------|---------|----------|---------|---------|---------|
| 80X180 32"x71" | 4100997 | -        | -       | -       | -       | -        | -       | -       | -       |
| 60X120 24"x48" | 4100998 | 4101004  | 4101001 | 4101002 | 4101006 | 4101007  | -       | 4101005 | -       |
| 60X60 24"x24"  | -       | -        | -       | 4101003 | -       | -        | -       | -       | -       |
| 30X60 12"x24"  | 4100999 | -        | -       | -       | -       | -        | -       | -       | -       |
| 20X80 8"x32"   | -       | -        | -       | -       | -       | -        | 4101011 | -       | -       |
| 7,5X120 3"x48" | 4101010 | -        | -       | -       | -       | -        | -       | -       | -       |
| 7,5X60 3"x24"  | -       | -        | -       | -       | -       | -        | -       | -       | 4101008 |
| Mosaic         | -       | -        | -       | -       | -       | -        | -       | -       | 4101009 |

Bianco

Verde

|      |         |         |
|------|---------|---------|
| Pli  | 4101016 | 4101015 |
| Path | 4101014 | 4101013 |

## SCB TECHNICAL FEATURES



IMPERVIOUS  
TILE P1

| NORMA STANDARD | CARATTERISTICHE FEATURES                                | VALORE PRESCRITTO REQUIRED VALUE                      | SUPERCLASSICA SCB       |
|----------------|---|---|-------------------------|
| ISO 10545/2    | DIMENSIONI - SIZE                                       |   |                         |
|                | lunghezza e larghezza<br>length and width               | ± 0,6 % / ± 2 mm                                      | ± 0,6 % / ± 2 mm        |
|                | spessore<br>thickness                                   | ± 5 % ± 0,5 mm  | ± 5 % ± 0,5 mm          |
|                | rettilineità degli spigoli<br>straightness of sides     | ± 0,5 % ± 1,5 mm                                      | ± 0,5 % ± 1,5 mm        |
|                | ortogonalità<br>wedging                                 | ± 0,5 % ± 2 mm  | ± 0,5 % ± 2 mm          |
|                | planarità<br>flatness                                   | ± 0,5 % ± 2 mm  | ± 0,5 % ± 2 mm          |
| ISO 10545/3    | assorbimento d'acqua<br>water absorption                | ≤ 0,5 %   | 0,3 %                   |
| ASTM C373      | water absorption  | ≤ 0,5 %   | meets the standards     |
| ISO 10545/9    | resistenza agli sbalzi termici<br>thermal shock         | nessuna alterazione visibile<br>no visible alteration | resiste<br>resistant    |
| ASTM C484      | thermal shock   | unaffected  | unaffected              |
| ISO 10545/12   | resistenza al gelo<br>frost/freeze resistance           | nessuna alterazione visibile<br>no visible alteration | resiste<br>resistant    |
| ASTM C1026     | frost/freeze resistance                                 | unaffected  | unaffected              |
| ISO 10545/13   | resistenza agli attacchi chimici<br>chemical resistance | nessuna alterazione visibile<br>no visible alteration | LA<br>≥ HB              |
| ASTM C650      | chemical resistance                                     |   | A                       |
| ISO 10545/4    | resistenza alla flessione<br>breaking strength          | ≥ 35 N/ mm <sup>2</sup>                               | 48 N/ mm <sup>2</sup>   |
| ISO 10545/7    | resistenza all'abrasione<br>visible abrasion resistance |   | PEI IV<br>PEI III Peggy |
| ASTM C1027     | visible abrasion resistance                             | CLASS I-V   | C.IV<br>C.III Peggy     |
| ISO 10545/14   | resistenza alle macchie<br>stain resistance             | ≥ CLASSE 3  | 5                       |
| ASTM C1378     | stain resistance  | ≥ CLASSE 3  | 5                       |
| ANSI A137.1    | aesthetic classes                                       | V0-V4   | V1                      |

## SUPERCLASSICA SCB

DIN 51130  
scivolosità  
anti-slip

DCOF  
dynamic coefficient of friction

|          |         |        |
|----------|---------|--------|
| NATURAL  | R10     | ≥ 0,42 |
| POLISHED | R9      | ≥ 0,42 |
| FLAMED   | R10 A+B | ≥ 0,42 |
| CRACK    | R10 A+B | ≥ 0,42 |
| GROOVED  | R10     | ≥ 0,42 |
| HAMMERED | R11 A+B | ≥ 0,42 |
| PEGGY    | R9      | ≥ 0,42 |
| CHEVRON  | R10     | ≥ 0,42 |

## PATH - PLI TECHNICAL FEATURES



| NORMA STANDARD | CARATTERISTICHE FEATURES                                | VALORE PRESCRITTO REQUIRED VALUE                      | PATH - PLI                           |
|----------------|---|---|--------------------------------------|
| ISO 10545/2    | DIMENSIONI - SIZE                                       |   |                                      |
|                | lunghezza e larghezza<br>length and width               | ± 0,5 % ± 2,0 mm                                      | ± 0,5 % ± 2,0 mm                     |
|                | spessore<br>thickness                                   | ± 10 % ± 0,5 mm                                       | ± 10 % ± 0,5 mm                      |
|                | rettilineità degli spigoli<br>straightness of sides     | ± 0,3 % ± 1,5 mm                                      | ± 0,3 % ± 1,5 mm                     |
|                | ortogonalità<br>rectangularity                          | ± 0,5 % ± 2,0 mm                                      | ± 0,5 % ± 2,0 mm                     |
|                | planarità<br>flatness                                   | + 0,5 % + 2,0 mm<br>- 0,3 % - 1,5 mm                  | + 0,5 % + 2,0 mm<br>- 0,3 % - 1,5 mm |
| ISO 10545/3    | assorbimento d'acqua<br>water absorption                | E > 10 %  | 16 %                                 |
| ISO 10545/13   | resistenza agli attacchi chimici<br>chemical resistance | nessuna alterazione visibile<br>no visible alteration | resiste<br>resistant                 |
| ASTM C650      | chemical resistance                                     |   | unaffected                           |
| ISO 10545/14   | resistenza alle macchie<br>stain resistance             | ≥ CLASSE 3  | 5                                    |
| ASTM C1378     | stain resistance  | ≥ CLASSE 3  | ≥ 4                                  |
| ISO 10545/11   | resistenza al cavillo<br>crazing resistance             | resiste<br>resistant                                  | resiste<br>resistant                 |

## SCB PACKING

| SCB                       | pcs | m <sup>2</sup> | kg/box | box/pal | m <sup>2</sup> /pal | kg/pal  | thickness |
|---------------------------|-----|----------------|--------|---------|---------------------|---------|-----------|
| 80x180 <sup>32"x71"</sup> | 2   | 2,88           | 55,90  | 20      | 57,60               | 1117,40 | 9 mm      |
| 60x120 <sup>24"x48"</sup> | 2   | 1,44           | 27,90  | 30      | 43,20               | 838,10  | 9 mm      |
| 60x60 <sup>24"x24"</sup>  | 3   | 1,08           | 21,00  | 40      | 43,20               | 838,10  | 9 mm      |
| 30x60 <sup>12"x24"</sup>  | 6   | 1,08           | 21,00  | 40      | 43,20               | 838,10  | 9 mm      |
| 7,5x120 <sup>3"x48"</sup> | 8   | 0,72           | 13,97  | 50      | 36,00               | 698,40  | 9 mm      |
| 7,5x60 <sup>3"x24"</sup>  | 12  | 0,54           | 10,48  | 48      | 25,92               | 502,85  | 9 mm      |
| Chevron                   | 6   | 0,96           | 18,62  | 48      | 46,08               | 893,95  | 9 mm      |
| Mosaic                    | 6   | -              | 6,11   | -       | -                   | -       | 9 mm      |
| Path                      | 21  | 0,47           | 7,63   | 125     | 59,12               | 953,75  | 10 mm     |
| Pli                       | 22  | 0,88           | 13,78  | 60      | 52,80               | 826,80  | 8 mm      |
| Skirting                  | 6   | 7,20 ml        | 10,48  | -       | -                   | -       | 9 mm      |