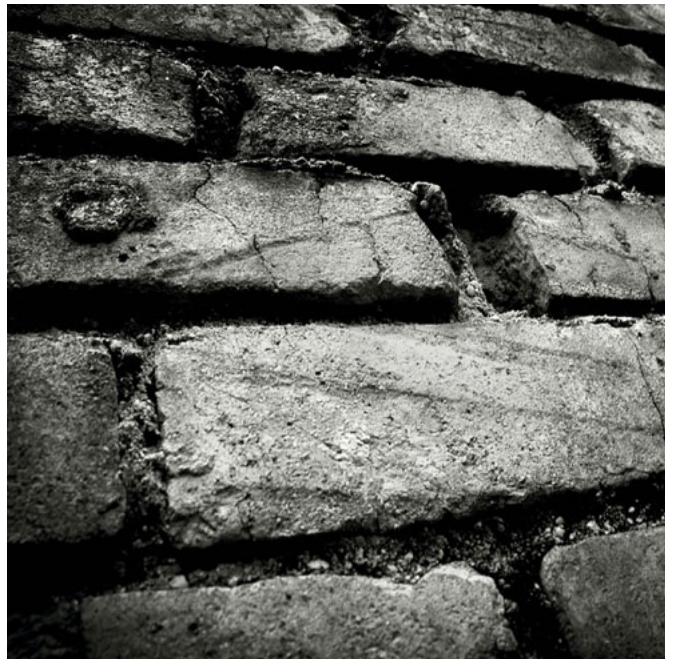




# TERRAE





COLLEZIONE IN GRES PORCELLANATO RETTIFICATO, REALIZZATO CON TECNOLOGIA DIGITALE. "TERRAE" RIVISITA IN 6 COLORI DI TENDENZA, LA TATTILITÀ E LA MORBIDEZZA DELLE ANTICHE SUPERFICI ARGILLOSE CON UN TOCCO ED UN APPEAL UNICI. L'ESCLUSIVO FORMATO "LOSANGA" IN 95,2x47,8 ARREDA GLI SPAZI SIA INSTALLATO SINGOLARMENTE CHE IN COMBINAZIONE CON GLI ALTRI FORMATI, TUTTI MODULARI: 47,8x97 . 23,7x97 . 47,8x47,8 23,7x47,8 e 23,7x23,7. LE FORMELLE "VILLA" CON UN'INIMITABILE STILE "ANTIQUE LOOK" SONO IMPREZIOSITE DA RAFFINATE METALLIZZAZIONI E RICERCATE LAPPATURE. UN PROGETTO ESCLUSIVO DI SETTECENTO PER IL RESIDENZIALE DI LUSO.

AN OUTSTANDING COLLECTION MADE IN PORCELAIN AND DIGITALLY DECORATED. "TERRAE" REVIEWS THE TOUCH AND THE SOFTNESS OF ANCIENT CLAYS' SURFACES WITH THE UNIQUE APPEAL OF 6 TRENDY COLOURS. THE EXCLUSIVE SHAPE "LOSANGA" SIZED CM 95,2x47,8 CAN DECORATES THE SPACES ALONE OR EVEN MIXED WITH 5 OTHER SIZES ALL MODULAR: CM 47,8x97 . 23,7x97 47,8x47,8 . 23,7x47,7 AND 23,7x23,7. THE ARTISTIC INSERTS "VILLA" WITH THEIR INCOMPARABLE "ANTIQUE LOOK" STYLES ARE ENRICHED WITH REFINED METALLIC DECORATIONS AND WITH CHARMING SHINY SURFACES RANDOMLY POLISHED. AN EXCLUSIVE PROGRAM OF SETTECENTO FOR RESIDENTIAL AND COMMERCIAL LUXURY DESTINATIONS.

COLLECTION DE GRÈS CÉRAMÉ RECTIFIÉ, ISSU DE LA TECHNOLOGIE NUMÉRIQUE. "TERRAE" REVISITE EN 6 COULEURS TENDANCES, LA DOUCEUR ET LE TOUCHER DES ANCIENNES SURFACES D'ARGILE AVEC UN EFFET ET UN ATTRAIT UNIQUE. LE FORMAT UNIQUE DE "LOSANGA" EN 95,2x47,8 AGENCE LES ESPACES, MIS EN UVRE SEUL OU EN COMBINAISON AVEC D'AUTRES FORMATS, TOUTS MODULABLES : 47,8x97 . 23,7x97. 47,8x47,8 23,7x47,7 . 23,7x23,7 ET. LES FORMELLE "VILLA" OFFRENT UN STYLE INIMITABLE "ANTIQUE LOOK" ET SONT ENRICHIES D'EFFETS MÉTALLISÉS RAFFINÉS ASSORTIS DE SEMIS-POLIS INIMITABLES . UN PROJET EXCLUSIF DE SETTECENTO POUR LA RÉSIDENCE DE LUXE.

KOLLEKTION VON VORWIEGEND REKTIFIZIERTEN FEINSTEINZEUGFLIESEN MIT DIGITALEM HERSTELLUNGSVERFAHREN. TERRAE KOMMT IN 6 AKTUELLEN FARBSTELLUNGEN AUF DIE SINNLICHKEIT UND SAMTIGKEIT ANTIKER TONOBERFLÄCHEN ZURUECK; MIT EINER BESONDEREN NOTE UND EINZIGARTIGER AUSSTRAHLUNG. DAS EXKLUSIVE "LOSANGA" FORMAT VON 95,2x47,8 CM GESTALTET DIE RAUMLICHKEITEN SOWOHL ALS EINZELFORMAT WIE AUCH IN KOMBINATION MIT DEN UEBRIGEN MODULAREN FORMATEN 47,8 x 97 23,7x97 . 47,8x47,8 . 23,7x47,7 UND 23,7x23,7 CM. DIE DEKORREIHE "VILLA" MIT IHREM UNNACHAHMLICHEN "ANTIK-LOOK" WIRD DURCH RAFFINIERT ANGESCHLIFFENE METALLAUFLAGEN NOCHMAL VEREDELT. EIN EXKLUSIVES SETTECENTO -PROJEKT FÜR DAS GEDIEGENE WOHNAMBIENTE.

КОЛЛЕКЦИЯ В РЕТИФИЦИРОВАННОМ КЕРАМОГРАНИТЕ, РЕАЛИЗОВАННАЯ ПРИ ИСПОЛЬЗОВАНИИ ЦИФРОВОЙ ТЕХНОЛОГИИ. В 6 САМЫХ СОВРЕМЕННЫХ ЦВЕТАХ, "TERRAE" ПЕРЕСМАТРИВАЕТ ОСЯЗАЕМОСТЬ И МЯГКОСТЬ АНТИЧНЫХ ГЛИНЯНЫХ ПОВЕРХНОСТЕЙ. ЭКСКЛЮЗИВНЫЙ ФОРМАТ "LOSANGA" 95,2x47,8 ПРЕДСТАВЛЯЕТ СОБОЙ ДЕКОРАТИВНЫЙ ЭЛЕМЕНТ ДЛЯ ЛЮБОГО ИНТЕРЬЕРА КАК ВЫЛОЖЕННЫЙ ОТДЕЛЬНО ТАК И В СОЧЕТАНИИ С ДРУГИМИ ФОРМАТАМИ: 47,8x97 . 23,7x97 . 47,8x47,8 . 23,7x47,7 E 23,7x23,7. ДЕКОРЫ "VILLA" В НЕПОВТОРИМОМ СТИЛЕ "ANTIQUE LOOK" ОБОГАЩЕНЫ ИЗЫСКАННОЙ МЕТАЛЛИЧЕСКОЙ ЛАППАТИРОВАННОЙ ДЕКОРАЦИЕЙ. "TERRAE" - ИСКЛЮЗИВНЫЙ ПРОЕКТ SETTECENTO ДЛЯ ЭЛИТНЫХ РЕЗИДЕНЦИЙ.

# TERRAE

## 6 FORMATI



47,8X97 . 19"X38"



23,7X97 . 9"X38"



47,8X95,2 . 19"X38"



47,8X47,8 . 19"X19"



23,7X47,8 . 9"X19"



23,7X23,7 . 9"X9"

## 6 COLORI



FANGO



MARNA



CRETA



CENERE



CEMENTO



ARDESIA

# TERRAE

ARDESIA 47,8X97 - 47,8X47,8





# TERRAE

CRETA 47,8X47,8 - 23,7X47,8 - 23,7X23,7 . FANGO 23,7X97 . MOSAICO FANGO 3,1X3,1







# TERRAE

CRETA 47,8X47,8  
CRETA 23,7X47,8  
CRETA 23,7X23,7  
DEC. VILLA C 23,7X23,7  
SOGGETTO 4





# TERRAE

CRETA 47,8X47,8  
CRETA 23,7X47,8  
CRETA 23,7X23,7  
DEC. VILLA C 23,7X23,7  
SOGGETTI 1/2/4



# TERRAE

CENERE 23,7X97 - 23,7X47,8





# TERRAE

47,8X95,2 LOSANGA CENERE









# TERRAE

47,8X95,2  
LOSANGA CEMENTO



# TERRAE

CEMENTO 47,8X47,8 - 47,8X95,2 LOSANGA CEMENTO









# TERRAE

CEMENTO 23,7X97  
DEC. VILLA F 23,7X23,7  
SOGGETTI 1/2/3/4



# TERRAE

47,8X95,2 LOSANGA F  
MARNA 47,8X47,8





# TERRAE

47,8X47,8 FANGO  
DEC. VILLA C 47,8X47,8  
SOGGETTO 3

# TERRAE

47,8X95,2 LOSANGA FANGO  
DEC. VILLA C 47,8X47,8  
SOGGETTI 1/2/3/4



# TERRAE

ARDESIA 47,8X47,8 - CENERE 47,8X47,8 - CEMENTO 47,8X47,8





# TERRAE

---

## FANGO



65 170056 fango 23,7x97 ret



51 170036 fango 23,7x47,8 ret



51 170046 fango 23,7x23,7 ret



65 170016 fango 47,8x97 ret



51 170006 fango 47,8x47,8 ret



61 170025 losanga fango 47,8x95,2

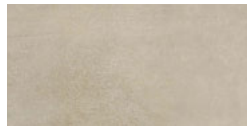
55 170076 fango 47,8x97 grip

53 170066 fango 47,8x47,8 grip

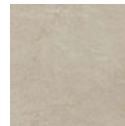
## CRETA



65 170055 creta 23,7x97 ret



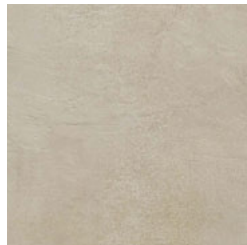
51 170035 creta 23,7x47,8 ret



51 170045 creta 23,7x23,7 ret



65 170015 creta 47,8x97 ret



51 170005 creta 47,8x47,8 ret

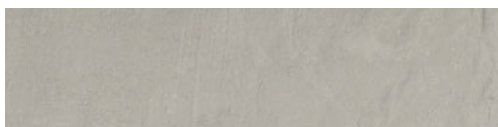


61 170024 losanga creta 47,8x95,2

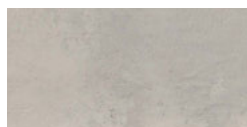
55 170075 creta 47,8x97 grip

53 170065 creta 47,8x47,8 grip

## CEMENTO



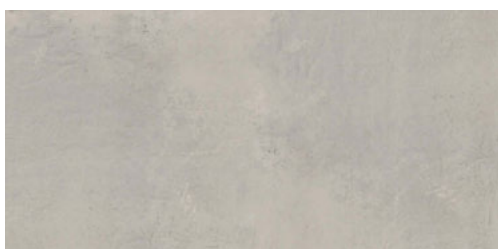
65 170051 cemento 23,7x97 ret



51 170031 cemento 23,7x47,8 ret



51 170041 cemento 23,7x23,7 ret



65 170011 cemento 47,8x97 ret



51 170001 cemento 47,8x47,8 ret



61 170019 losanga cemento 47,8x95,2

55 170071 cemento 47,8x97 grip

53 170061 cemento 47,8x47,8 grip





## MARNA



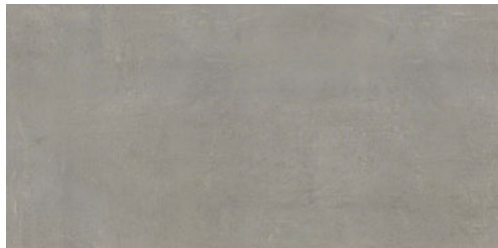
[65] 170053 marna 23,7x97 ret



[51] 170033 marna 23,7x47,8 ret



[51] 170043 marna 23,7x23,7 ret



[65] 170013 marna 47,8x97 ret



[51] 170003 marna 47,8x47,8 ret

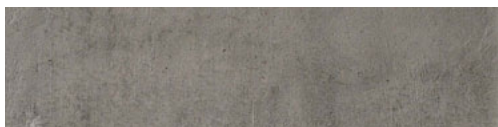


[61] 170022 losanga marna 47,8x95,2

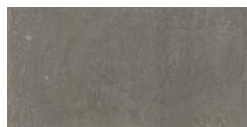
[55] 170073 marna 47,8x97 grip

[53] 170063 marna 47,8x47,8 grip

## CENERE



[65] 170052 cenere 23,7x97 ret



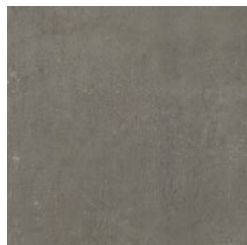
[51] 170032 cenere 23,7x47,8 ret



[51] 170042 cenere 23,7x23,7 ret



[65] 170012 cenere 47,8x97 ret



[51] 170002 cenere 47,8x47,8 ret

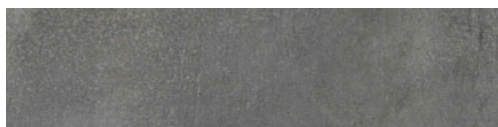


[61] 170021 losanga cenere 47,8x95,2

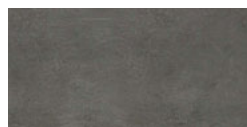
[55] 170072 cenere 47,8x97 grip

[53] 170062 cenere 47,8x47,8 grip

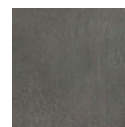
## ARDESIA



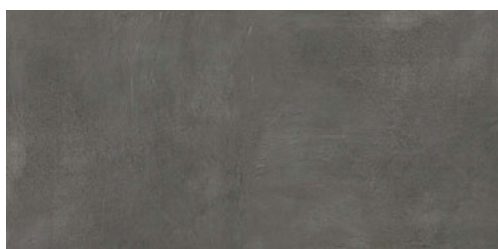
[65] 170054 ardesia 23,7x97 ret



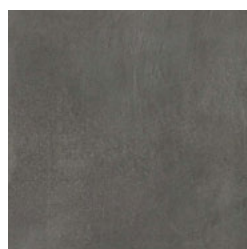
[51] 170034 ardesia 23,7x47,8 ret



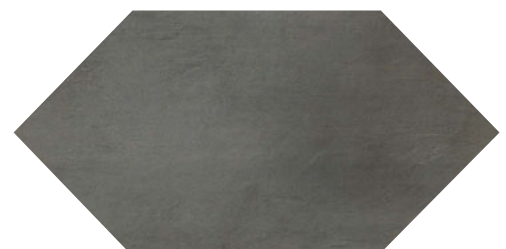
[51] 170044 ardesia 23,7x23,7 ret



[65] 170014 ardesia 47,8x97 ret



[51] 170004 ardesia 47,8x47,8 ret



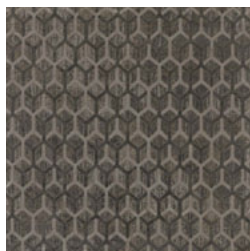
[61] 170023 losanga ardesia 47,8x95,2

[55] 170074 ardesia 47,8x97 grip

[53] 170064 ardesia 47,8x47,8 grip

# TERRAE

## DECORO VILLA



96 17023- villa C sog. 1 47,8x47,8



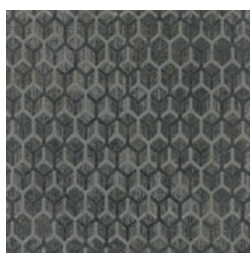
96 17024- villa C sog. 2 47,8x47,8



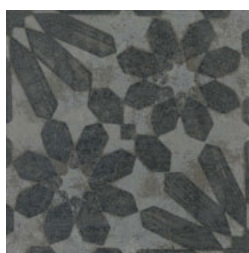
96 17025- villa C sog. 3 47,8x47,8



96 17026- villa C sog. 4 47,8x47,8



96 17027- villa F sog. 1 47,8x47,8



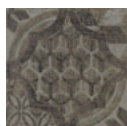
96 17028- villa F sog. 2 47,8x47,8



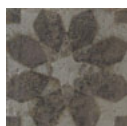
96 17029- villa F sog. 3 47,8x47,8



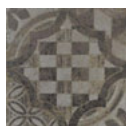
96 17030- villa F sog. 4 47,8x47,8



46 17031- villa C sog. 1 23,7x23,7



46 17032- villa C sog. 2 23,7x23,7



46 17033- villa C sog. 3 23,7x23,7



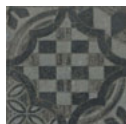
46 17034- villa C sog. 4 23,7x23,7



46 17035- villa F sog. 1 23,7x23,7



46 17036- villa F sog. 2 23,7x23,7

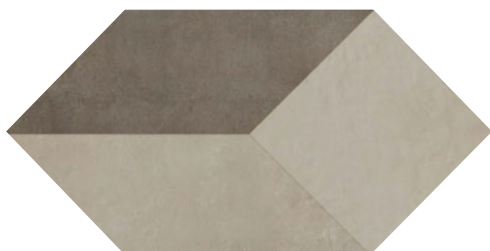


46 17037- villa F sog. 3 23,7x23,7

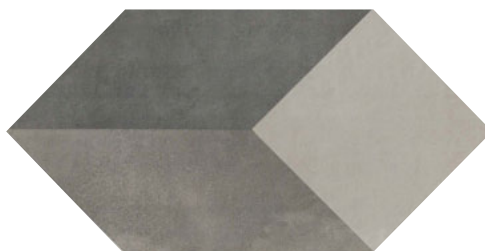


46 17038- villa F sog. 4 23,7x23,7

## DECORO LOSANGA



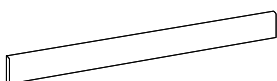
61 170017 losanga colori C (fango, creta, bianca) 47,8x95,2



61 170018 losanga colori F (ardesia, cenere, cemento) 47,8x95,2

## PEZZI SPECIALI

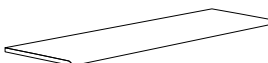
TRIMS . PIÈCES SPÉCIALES . FORMSTÜCKE . Специальные изделия



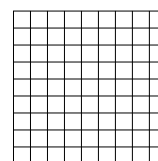
70 battiscopa 7,8x47,8  
17005- cemento  
17006- cenere  
17007- marna  
17008- ardesia  
17009- creta  
17010- fango



60 elemento a L 15,7x47,8x5  
17017- cemento  
17018- cenere  
17019- marna  
17020- ardesia  
17021- creta  
17022- fango



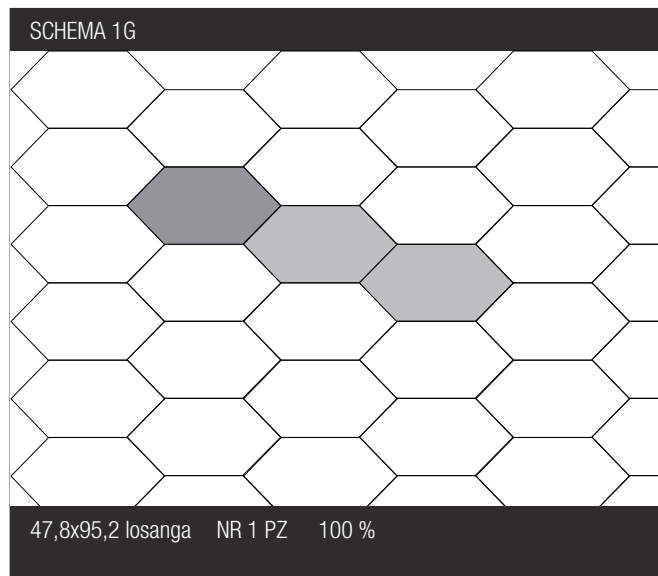
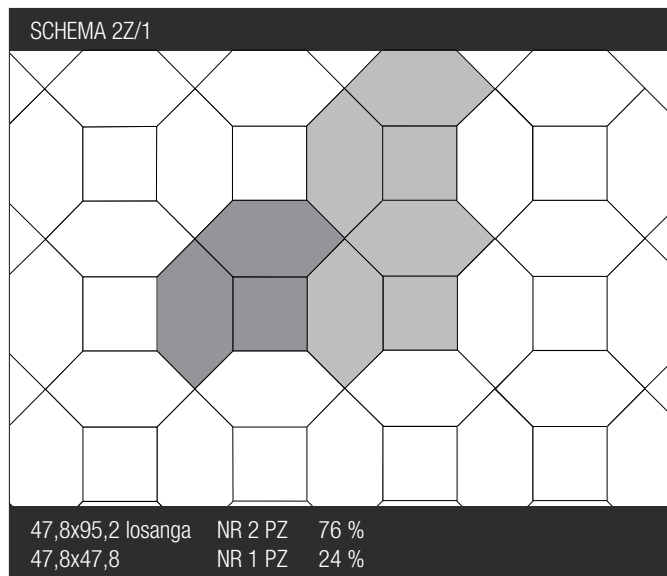
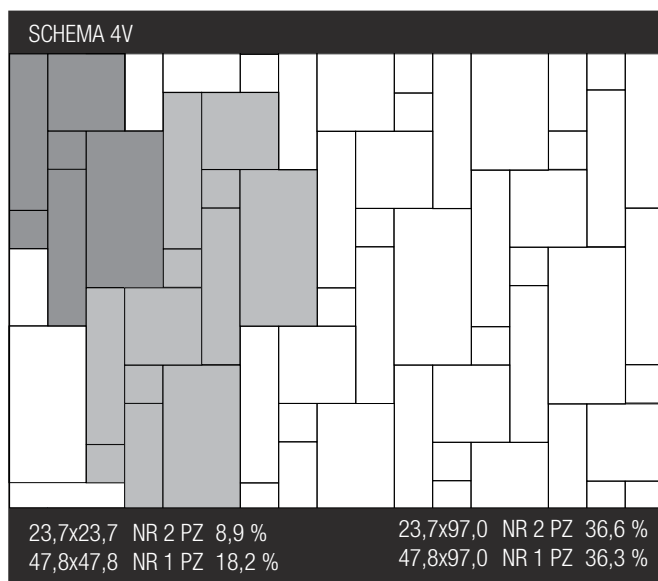
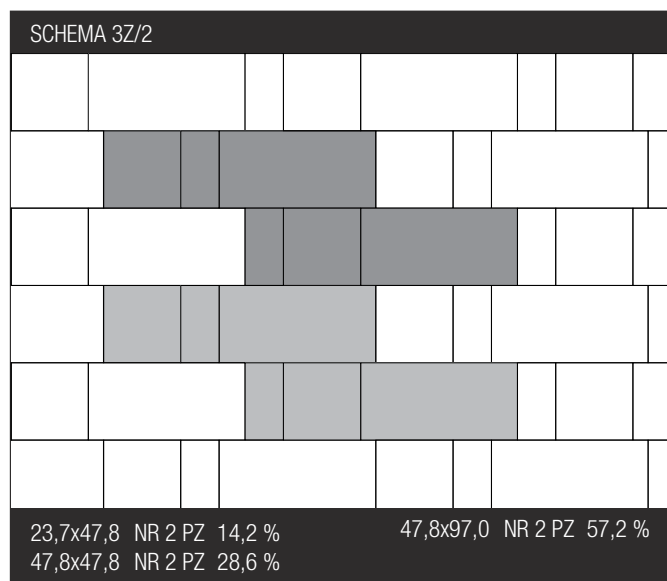
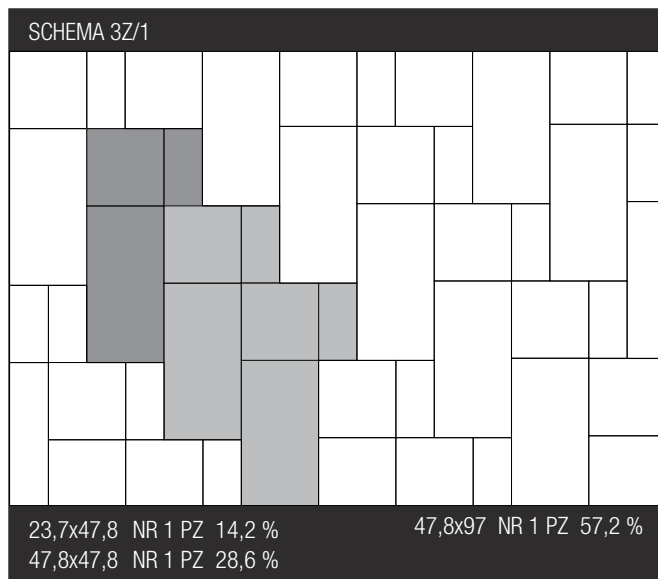
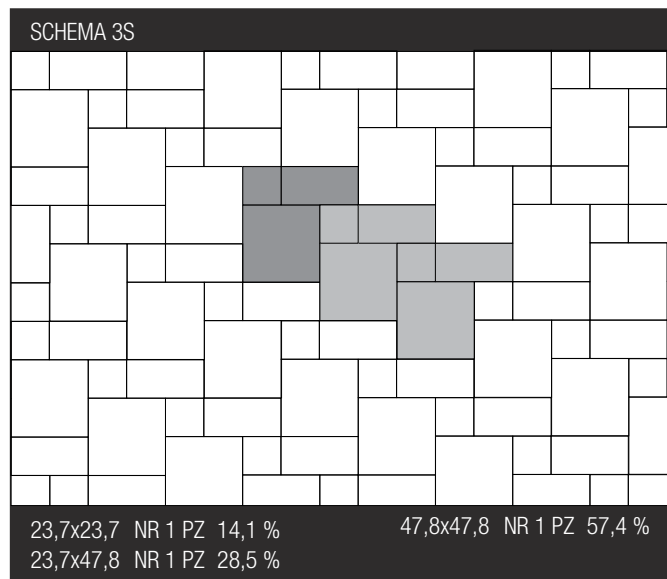
44 step 15,7x47,8  
17011- cemento  
17012- cenere  
17013- marna  
17014- ardesia  
17015- creta  
17016- fango



67 mosaico 3,1x3,1 foglio 30x30  
170081 cemento  
170082 cenere  
170083 marna  
170084 ardesia  
170085 creta  
170086 fango

# TERRAE








SCHEMI DI POSA . LAYING SOLUTIONS . VERLEGESCHEMATA . SOLUTION DE POSE



## Caratteristiche tecniche

Technical features . Caractéristiques techniques  
Technische Eigenschaften . Технические характеристики

### UNI EN ISO 14411 Bla GL

		Metodo di prova Testing method Teste d'essai Prüfmethode Методика испытаний	Valore Value Valeur Wert Величина
	Assorbimento acqua Water absorption Absorption d'eau Wasseraufnahme Водопоглощение	ISO 10545.3	< 0,5 %
	Resistenza alla flessione Bending strength Résistance à la flexion Biegezugfestigkeit Стойкость к изгибу	ISO 10545.4	Conforme
	Resistenza all'attacco chimico Chemical resistance Résistance à l'attaque chimique Beständigkeit gegen Chemikalien Стойкость к химическому воздействию	ISO 10545.13	A
	Resistenza alle macchie Stain resistance Résistance aux taches Fleckenbeständigkeit Стойкость к образованию пятен	ISO 10545.14	5
	Anti scivolosità Anti-slip index Coefficient anti-dérapage Trittsicherheitskoeffizient Характеристики устойчивости к скольжению	DIN 51130 DIN 51097  ANSI A 137.1:2012	Naturale Grip R9 R11 A A+B  >0.42 >0.42 wet wet
	Resistenza all'abrasione Resistance to abrasion Résistance à l'abrasion Abriebhärte Стойкость к истиранию	ISO 10545.7	Fango, Ardesia: PEI IV Cemento, Creta, Cenere e Marna: PEI V
	Determinazione della resistenza al gelo Frost resistance index Coefficient de résistance au gel Feststellung der Frostbeständigkeit Определение морозостойкости	ISO 10545.12	Ingelivo. Frost proof Ingelif. Frostsicher. Морозостойкая.

### Tabella imballi

Packaging . Emballages  
Verpackungen . Упаковка

	Mq x Scat.	Pz x Scat.	Kg x Scat.	Mq x Pall.	Scat. x Pall	Kg x Pall.
47,8x47,8	1,370	6	30,00	32,88	24	720,00
47,8x97	0,930	2	20,00	39,06	42	840,00
47,8x95,2 losanga	0,680	2	20,00	27,20	40	800,00
23,7x97	0,920	4	19,93	44,16	48	956,64
23,7x47,8	1,360	12	30,00	53,04	39	1170,00
23,7x23,7	1,060	19	21,47	42,40	40	858,80
7,8x47,8 battiscopa	5,736	12	9,70			
15,7x47,8x5 elemento a L		4	8,80			
15,7x47,8 step		10	15,95			
47,8x47,8 decoro		4	20,00			
23,7x23,7 decoro		4	4,52			
3,1x3,1 mosaico foglio 30x30	0,540	6	10,22	18,36	34	347,48

**SETTECENTO**  
mosaici e ceramiche d'arte



Ceramics of Italy

Ceramiche 'Settecento Valtresinaro  
Via del Crociale, 21 - 41042 Fiorano Modenese (MO)  
Tel. +39 0536 928711 - Fax +39 0536 928718  
www.settecento.com - e-mail: info@settecento.com