

SALONI

Street-Art

Collection



60X120 · 24"x47" · 45X90 · 18"x35" · 30X60 · 12"x24" · 25X75 · 10"x30" · 60X60 · 24"x24" · 45X45 · 18"x18"

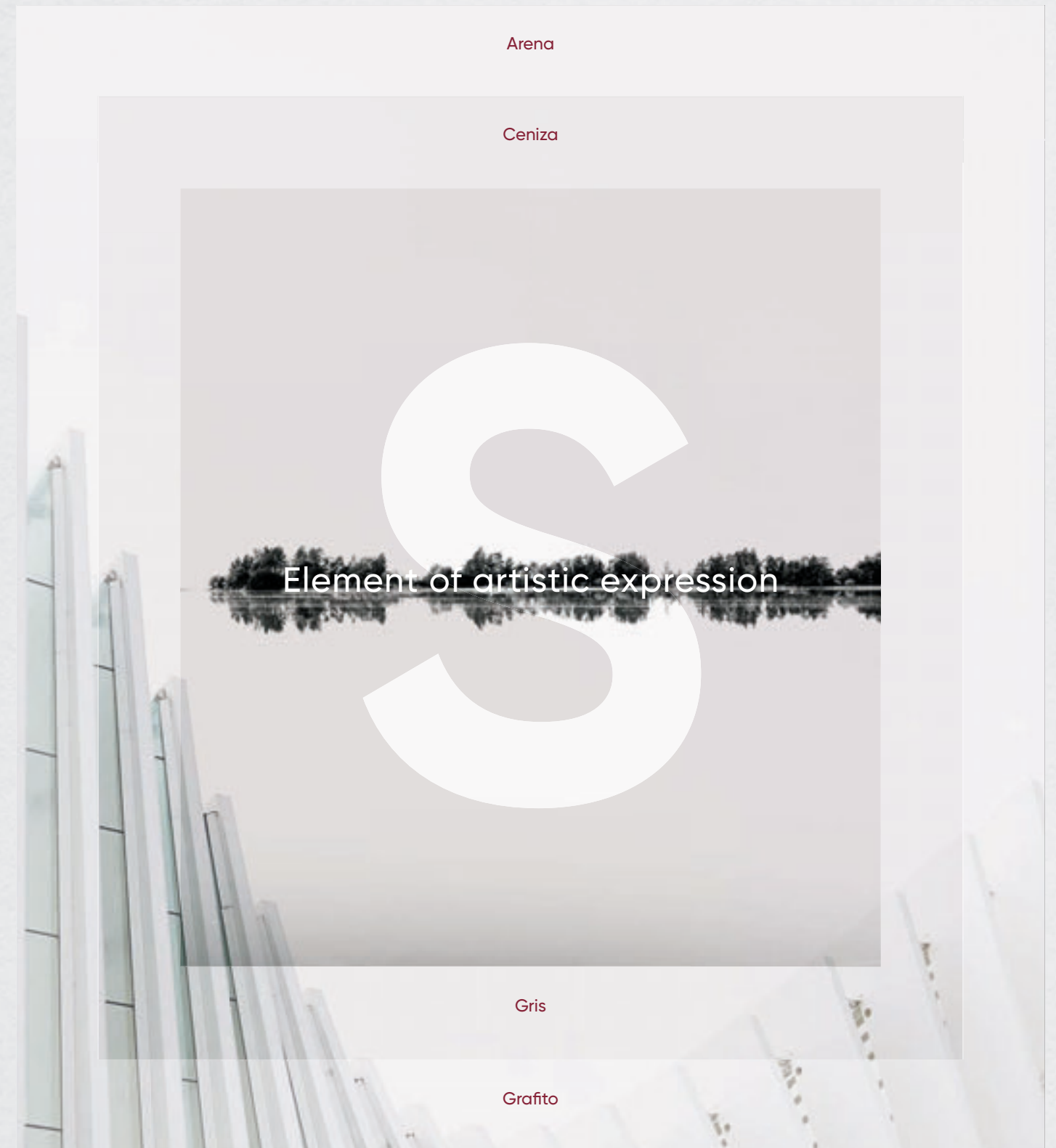
Street-Art

The Street-Art collection takes its inspiration from street art graphics that are rich and full of nuances. We have aimed to create a design balance capable of creating a timeless product, thanks to its neutral and natural chromatic range, but also with a modern, urban and industrial spirit.

La colección Street-Art toma como referencias cementos de gráficas ricas y repletos de matices. Se ha buscado un diseño equilibrado capaz de crear un producto atemporal, gracias a su gama cromática neutra y natural, pero con un espíritu moderno, urbano e industrial.

Les ciments aux graphismes riches et pleins de nuances servent de référence à la collection Street-Art. Nous avons imaginé un design équilibré capable de créer un produit hors du temps, grâce à sa gamme chromatique neutre et naturelle, bien que marquée d'un esprit moderne, urbain et industriel.

60X120 · 24"x47" · 45X90 · 18"x35" · 30X60 · 12"x24" · 25X75 · 10"x30" · 60X60 · 24"x24" · 45X45 · 18"x18"





Arena



Ceniza



Gris



Grafito

In this collection, cement transforms the mere constructive material into an element of artistic expression combined with the colour of the Art mosaic and with decorative reliefs that enrich the collection's power of expression. The evolved surface of the collection is enhanced with a slight stressing or structured finish.

En esta colección el cemento se transforma de mero material constructivo a elemento de expresión artística combinado con el color del mosaico Art y con relieves decorativos que enriquecen la fuerza expresiva de la colección. La evolucionada superficie de la colección está revalorizada por una leve estructura o relieve.

Dans cette collection, le ciment, un simple matériau de construction, se transforme en un élément d'expression artistique, conjuguant la couleur de la mosaïque Art et des reliefs décoratifs qui exaltent l'expressivité de la collection. La surface évoluée de la collection est glorifiée par une légère structure ou un relief.



Formwork



Urban



Town

Street-Art

WALL & FLOOR TILE



SALONI COLLECTION

SALONI COLLECTION

STREET 60X120 ARENA

Street-Art

WALL & FLOOR TILE

SALONI COLLECTION



STREET 30X60 GRIS + M. ART 30X30 AZUL + STREET 60X60 GRIS



SALONI COLLECTION

Street-Art

WALL & FLOOR TILE



SALONI COLLECTION

SALONI COLLECTION

STREET 30X60 ARENA + STREET 60X60

Street-Art

WALL & FLOOR TILE

SALONI COLLECTION



SALONI COLLECTION

STREET 25X75 ARENA + STREET URBAN 25X75 ARENA + STREET 60X60 ARENA

Street-Art

WALL & FLOOR TILE



STREET-ART 60X120 CENIZA + STREET-ART 60X120 GRAFITO

WALL & FLOOR TILE



HEG230 STREET 60X120 ARENA · B41
 KVQ230 STREET 60X120 ARENA C2 · B41



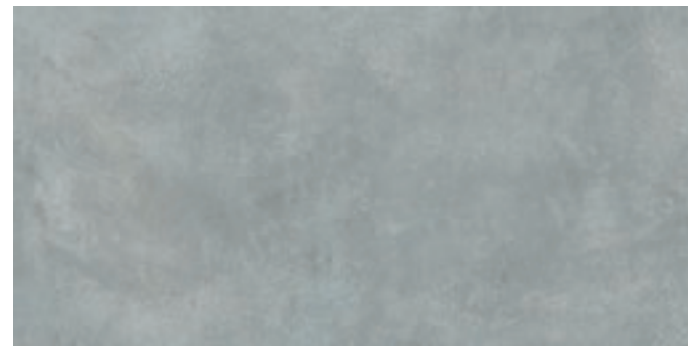
JDN230 STREET 45X90 ARENA · B30



HEG713 STREET 60X120 CENIZA · B41
 KVQ713 STREET 60X120 CENIZA C2 · B41



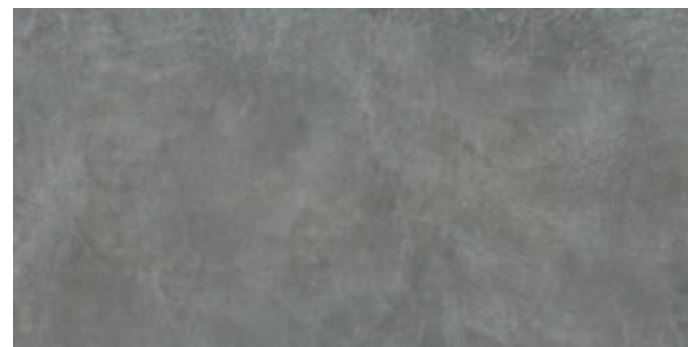
JDN713 STREET 45X90 CENIZA · B30



HEG710 STREET 60X120 GRIS · B41



JDN710 STREET 45X90 GRIS · B30

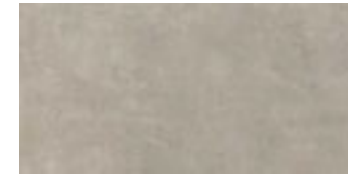


HEG770 STREET 60X120 GRAFITO · B30



JDN770 STREET 45X90 GRAFITO · B30

WALL & FLOOR TILE



FRB230 STREET 30X60 ARENA · B24
 FRW230 STREET 30X60 ARENA ANTID. · B25



JBX230 FORMWORK 45X90 ARENA · B37



FRB713 STREET 30X60 CENIZA · B24
 FRW713 STREET 30X60 CENIZA ANTID. · B25



JBX713 FORMWORK 45X90 CENIZA · B37



FVK713 FORMWORK 30X60
 CENIZA · B25



FRB710 STREET 30X60 GRIS · B24
 FRW710 STREET 30X60 GRIS ANTID. · B25



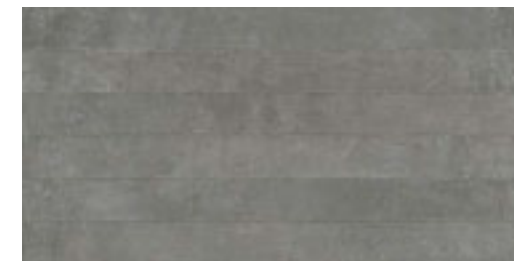
JBX710 FORMWORK 45X90 GRIS · B37



FVK710 FORMWORK 30X60
 GRIS · B25



FRB770 STREET 30X60 GRAFITO · B24
 FRW770 STREET 30X60 GRAFITO ANTID. · B25



JBX770 FORMWORK 45X90 GRAFITO · B37

WALL & FLOOR TILE



URBAN



TOWN



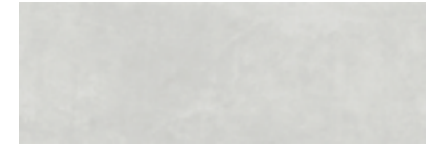
FORMWORK

SALONI COLLECTION

25X75 · 10"x30"
WHITE BODY · PASTA BLANCA · PATÉ BLANCHE



WALL TILE



HGZ713 STREET 25X75 CENIZA · B13



JGW713 URBAN 25X75 CENIZA · B16



JHP713 TOWN 25X75 CENIZA · B16



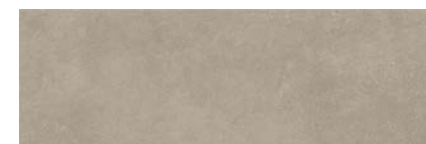
HGZ710 STREET 25X75 GRIS · B13



JGW710 URBAN 25X75 GRIS · B16



JHP710 TOWN 25X75 GRIS · B16



HGZ230 STREET 25X75 ARENA · B13



JGW230 URBAN 25X75 ARENA · B16



JHP230 TOWN 25X75 ARENA · B16

SALONI COLLECTION

WALL & FLOOR TILE



STREET 60X60 CENIZA

45X45 · 18"x18" · 60X60 · 24"x24"
 PORCELAIN COLOURED BISCUIT · PORCELÁNICO COLOR MASA · GRÈS CÉRAME COLORÉ DANS LA MASSE

WALL & FLOOR TILE



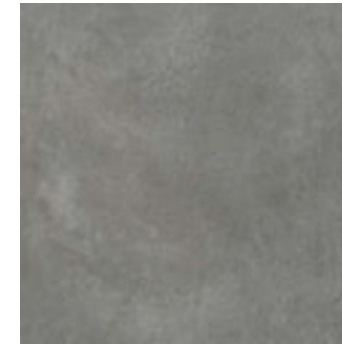
HXM230 STREET 60X60 ARENA · B25
 KVR230 STREET 60X60 ARENA C2 · B28
 GZK230 STREET 60X60 ARENA ANTID. · B28
 FTX230 STREET 45X45 ARENA · B17



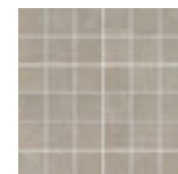
HXM713 STREET 60X60 CENIZA · B25
 KVR713 STREET 60X60 CENIZA C2 · B28
 GZK713 STREET 60X60 CENIZA ANTID. · B28
 FTX713 STREET 45X45 CENIZA · B17



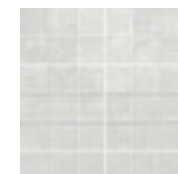
HXM710 STREET 60X60 GRIS · B25
 GZK710 STREET 60X60 GRIS ANTID. · B28
 FTX710 STREET 45X45 GRIS · B17



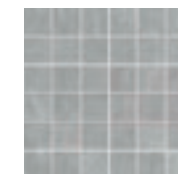
HXM770 STREET 60X60 GRAFITO · B25
 GZK770 STREET 60X60 GRAFITO ANTID. · B28
 FTX770 STREET 45X45 GRAFITO · B17



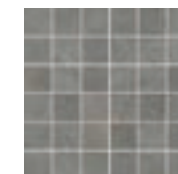
FMX230 M. STREET 30X30 ARENA · B63



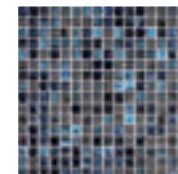
FMX713 M. STREET 30X30 CENIZA · B63



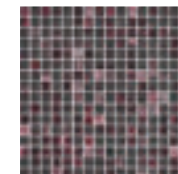
FMX710 M. STREET 30X30 GRIS · B63



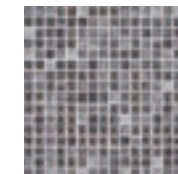
FMX770 M. STREET 30X30 GRAFITO · B63



GBG100 M. ART 30X30 AZUL · B34



GBG120 M. ART 30X30 VIOLETA · B34



GBG710 M. ART 30X30 GRIS · B34



GBG800 M. ART 30X30 ROJO · B34



| | | |
|--------|------------------------|-----|
| FKX713 | R. STREET 8X45 CENIZA | P06 |
| FKX710 | R. STREET 8X45 GRIS | P06 |
| FKX230 | R. STREET 8X45 ARENA | P06 |
| FKX770 | R. STREET 8X45 GRAFITO | P06 |

| | | |
|--------|------------------------|-----|
| GNS713 | R. STREET 8X60 CENIZA | P13 |
| GNS710 | R. STREET 8X60 GRIS | P13 |
| GNS230 | R. STREET 8X60 ARENA | P13 |
| GNS770 | R. STREET 8X60 GRAFITO | P13 |



| | | |
|--------|----------------------------|-----|
| GXF713 | PELD. STREET 45X45 CENIZA | P34 |
| GXF710 | PELD. STREET 45X45 GRIS | P34 |
| GXF230 | PELD. STREET 45X45 ARENA | P34 |
| GXF770 | PELD. STREET 45X45 GRAFITO | P34 |

| | | |
|--------|----------------------------|-----|
| GNW713 | PELD. STREET 30X60 CENIZA | P42 |
| GNW710 | PELD. STREET 30X60 GRIS | P42 |
| GNW230 | PELD. STREET 30X60 ARENA | P42 |
| GNW770 | PELD. STREET 30X60 GRAFITO | P42 |

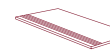
| | | |
|--------|------------------------------|-----|
| KVT713 | PELD. STREET 30X60 CENIZA C2 | P42 |
| KVT230 | PELD. STREET 30X60 ARENA C2 | P42 |

| | | |
|--------|-----------------------------------|-----|
| FXS713 | PELD. STREET 30X60 CENIZA ANTID. | P42 |
| FXS710 | PELD. STREET 30X60 GRIS ANTID. | P42 |
| FXS230 | PELD. STREET 30X60 ARENA ANTID. | P42 |
| FXS770 | PELD. STREET 30X60 GRAFITO ANTID. | P42 |

| | | |
|--------|----------------------------|-----|
| HPO713 | PELD. STREET 30X90 CENIZA | P43 |
| HPO710 | PELD. STREET 30X90 GRIS | P43 |
| HPO230 | PELD. STREET 30X90 ARENA | P43 |
| HPO770 | PELD. STREET 30X90 GRAFITO | P43 |

| | | |
|--------|-----------------------------|-----|
| HEF713 | PELD. STREET 30X120 CENIZA | P48 |
| HEF710 | PELD. STREET 30X120 GRIS | P48 |
| HEF230 | PELD. STREET 30X120 ARENA | P48 |
| HEF770 | PELD. STREET 30X120 GRAFITO | P48 |

| | | |
|--------|-------------------------------|-----|
| KVW713 | PELD. STREET 30X120 CENIZA C2 | P48 |
| KVW230 | PELD. STREET 30X120 ARENA C2 | P48 |



| | | |
|--------|---------------------------------|-----|
| GMF713 | PELD. R.R. STREET 45X45 CENIZA | P24 |
| GMF710 | PELD. R.R. STREET 45X45 GRIS | P24 |
| GMF230 | PELD. R.R. STREET 45X45 ARENA | P24 |
| GMF770 | PELD. R.R. STREET 45X45 GRAFITO | P24 |

| | | |
|--------|---------------------------------|-----|
| GZY713 | PELD. R.R. STREET 30X60 CENIZA | P30 |
| GZY710 | PELD. R.R. STREET 30X60 GRIS | P30 |
| GZY230 | PELD. R.R. STREET 30X60 ARENA | P30 |
| GZY770 | PELD. R.R. STREET 30X60 GRAFITO | P30 |

| | | |
|--------|-----------------------------------|-----|
| KVS713 | PELD. R.R. STREET 30X60 CENIZA C2 | P30 |
| KVS230 | PELD. R.R. STREET 30X60 ARENA C2 | P30 |

| | | |
|--------|--|-----|
| GHR713 | PELD. R.R. STREET 30X60 CENIZA ANTID. | P30 |
| GHR710 | PELD. R.R. STREET 30X60 GRIS ANTID. | P30 |
| GHR230 | PELD. R.R. STREET 30X60 ARENA ANTID. | P30 |
| GHR770 | PELD. R.R. STREET 30X60 GRAFITO ANTID. | P30 |

| | | |
|--------|---------------------------------|-----|
| HLG713 | PELD. R.R. STREET 30X90 CENIZA | P33 |
| HLG710 | PELD. R.R. STREET 30X90 GRIS | P33 |
| HLG230 | PELD. R.R. STREET 30X90 ARENA | P33 |
| HLG770 | PELD. R.R. STREET 30X90 GRAFITO | P33 |

| | | |
|--------|----------------------------------|-----|
| HHT713 | PELD. R.R. STREET 30X120 CENIZA | P42 |
| HHT710 | PELD. R.R. STREET 30X120 GRIS | P42 |
| HHT230 | PELD. R.R. STREET 30X120 ARENA | P42 |
| HHT770 | PELD. R.R. STREET 30X120 GRAFITO | P42 |

| | | |
|--------|------------------------------------|-----|
| KVV713 | PELD. R.R. STREET 30X120 CENIZA C2 | P42 |
| KVV230 | PELD. R.R. STREET 30X120 ARENA C2 | P42 |

Street-Art

WALL & FLOOR TILE



SALONI COLLECTION

SALONI COLLECTION

STREET 45X90 GRIS + FORMWORK 45X90 GRIS + M ART ROJO 30X30 + STREET 60X60 GRAFITO

PACKING LIST · EMBALAJE · EMBALLAGE

| DENOMINACIÓN | UD. | UD. CAJA | M2 CAJA | Kg CAJA | CAJAS PALET | M2 PALET | Kg PALET |
|-----------------------------|-----|----------|---------|---------|-------------|----------|----------|
| PAV.BASE 60X120 STREET | M² | 2 | 1,44 | 35,50 | 27 | 38,88 | 958 |
| PAV.BASE 45X90 STREET | M² | 3 | 1,22 | 27,00 | 44 | 53,68 | 1.188 |
| PAV.BASE 45X90 FORMWORK | M² | 3 | 1,22 | 27,00 | 44 | 53,68 | 1.188 |
| PAV.BASE 30X60 STREET | M² | 6 | 1,06 | 25,38 | 40 | 42,40 | 1.015 |
| PAV.BASE 30X60 STREET ANTID | M² | 6 | 1,06 | 25,38 | 40 | 42,40 | 1.015 |
| PAV.BASE 30X60 FORMWORK | M² | 6 | 1,06 | 24,04 | 40 | 42,40 | 962 |
| REV.BASE 25X75 CM STREET | M² | 7 | 1,32 | 21,00 | 36 | 47,52 | 756 |
| REV.BASE 25X75 CM URBAN | M² | 7 | 1,32 | 21,00 | 36 | 47,52 | 756 |
| REV.BASE 25X75 CM TOWN | M² | 7 | 1,32 | 21,00 | 36 | 47,52 | 756 |
| PAV.BASE 60X60 STREET | M² | 3 | 1,07 | 22,53 | 40 | 42,80 | 901 |
| PAV.BASE 60X60 STREET ANTID | M² | 3 | 1,07 | 22,65 | 40 | 42,80 | 901 |
| PAV.BASE 45X45 STREET | M² | 7 | 1,43 | 27,50 | 44 | 62,92 | 1.210 |
| MOSAICO 30X30 STREET | M² | 6 | 0,53 | 10,50 | 60 | 31,80 | 630 |
| MOSAICO 30X30 ART | UD | 2 | 0,20 | 1,84 | 150 | 30,00 | 276 |
| RODAPIE 8X60 STREET | UD | 10 | 0,48 | 12,28 | 80 | 38,40 | 982 |
| RODAPIE 8X45 STREET | UD | 12 | 0,44 | 9,00 | 112 | 49,73 | 1.008 |
| PELDAÑO 30X120 STREET | UD | 2 | 0,72 | 14,83 | 14 | 10,08 | 208 |
| PELDAÑO 30X90 STREET | UD | 2 | 0,54 | 14,20 | 15 | 8,10 | 213 |
| PELDAÑO 30X60 STREET | UD | 2 | 0,36 | 8,27 | 28 | 10,08 | 232 |
| PELDAÑO 45X45 STREET | UD | 2 | 0,41 | 8,26 | 32 | 12,96 | 264 |
| PELD.R.R. 30X120 STREET | UD | 2 | 0,72 | 14,83 | 20 | 14,40 | 297 |
| PELD.R.R. 30X90 STREET | UD | 3 | 0,81 | 21,30 | 20 | 16,20 | 426 |
| PELD.R.R. 30X60 STREET | UD | 4 | 0,72 | 16,54 | 28 | 20,16 | 463 |
| PELD.R.R. 45X45 STREET | UD | 7 | 1,42 | 28,91 | 22 | 31,19 | 636 |

TECHNICAL CHARACTERISTICS · CARACTERÍSTICAS TÉCNICAS · CARACTÉRISTIQUES TECHNIQUES
(UNE-EN-14411)

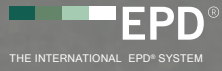
| STANDARS NORMA / NORME | FEATURES CARACTERÍSTICAS / CARACTÉRISTIQUES | RESULT OF TEST RESULTADO DEL ENSAYO / RÉSULTATS DE L'ESSAIE | |
|---------------------------|---|--|-----------------------------------|
| | | Bla Anex G | Blll Anex L |
| UNE-EN ISO 10545-3 | Water Absorption /Absorción de agua/Absorption de l'eau | Eb ≤ 0,5 % | Eb > 10 % |
| UNE-EN ISO 10545-4 | Breaking strength /Fuerza de rotura/Charge de rupture en flexion | Min. 1500 N | Min. 900 N |
| UNE-EN ISO 10545-5 | Bendind strength /Resistencia a la flexión/Résistance à la flexion | Min. 40 N/mm² | Min. 17 N/mm² |
| UNE-EN ISO 10545-6 | Resistance to deep abrasion /Resistencia a la abrasión profunda/Résistance à l'abrasion profonde | < 175 mm³ | np |
| UNE-EN ISO 10545-9 | Thermal shock resistance /Resistencia al choque térmico/Résistance au choc thermique | Complies / Cumple / Replis | np |
| UNE-EN ISO 10545-11 | Resistance to crazing /Resistencia al cuarteo/Résistance au craquellement | Complies / Cumple / Replis | Complies / Cumple / Replis |
| UNE-EN ISO 10545-12 | Frost resistance /Resistencia a la helada/Résistance au gel | Complies / Cumple / Replis | np |
| UNE-EN ISO 10545-13 | Chemical resistance /Resistencia al ataque químico/Résistance à l'attaque chimique | UA / ULA / UHA | GA / GLA / GHA |
| UNE-EN ISO 10545-14 | Resistance to staining /Resistencia a las manchas/Résistance aux tâches | Clase 5 | Clase 5 |

Due to the printing process of the catalogue the representation of the colors of pieces is approximate and may differ slightly in shade from the real pieces. References, price groups and packing details should be checked, as there may be typographical errors when printing this catalogue.

Debido al proceso de impresión del catálogo la representación de los colores de nuestros productos es aproximada y pueden variar ligeramente en tono respecto a las piezas reales. Referencias, grupos de precio y características de packing deben verificarse, ya que puede haber errores tipográficos a la hora de imprimir este catálogo.

En fonction du processus d'impression du catalogue, la représentation des couleurs de nos produits est approximative et peut varier légèrement de ton dans les pièces réelles. Les références, les groupes de prix et les caractéristiques d'emballage doivent être vérifiés car des erreurs typographiques peuvent apparaître lors de l'impression de ce catalogue.

SALONI



CERÁMICA SALONI

Ctra. Alcora Km. 17, 12130

San Juan de Moró, Castellón, SPAIN

saloni@saloni.com

P +34 964 34 34 34 · F +34 964 70 10 01

saloni.com

