

# RUGGINE · SHINE

Monoporosa Rectificado  
Rectified Wall Tiles



V3



## RUGGINE LATÓN

V1440108 - 100151493 - G261  
33.3x100 cm (x9.2 mm) 13"x39 1/2"

Butech - Recomendada junta Recommends joint  
colorstuk rapid n marfil B22502009 - 100004302

### PERFIL RUGGINE LATÓN

V3960172 - 100024182 - G97  
1.5x100 cm (x15.0 mm) 5/8"x39 1/2"



## RUGGINE CALDERA

V1440094 - 100149908 - G261  
33.3x100 cm (x9.2 mm) 13"x39 1/2"

Butech - Recomendada junta Recommends joint  
colorstuk rapid n marron B22502010 - 100004303

### PERFIL RUGGINE CALDERA

V3960173 - 100029891 - G97  
1.5x100 cm (x15.0 mm) 5/8"x39 1/2"



## RUGGINE ALUMINIO

V1440008 - 100142906 - G261  
33.3x100 cm (x9.2 mm) 13"x39 1/2"

Butech - Recomendada junta Recommends joint  
colorstuk rapid n manhattan B22502002 - 100004295

### PERFIL RUGGINE ALUMINIO

V3960171 - 100029889 - G97  
1.5x100 cm (x15.0 mm) 5/8"x39 1/2"



## RUGGINE

V1440035 - 100144839 - G261  
33.3x100 cm (x9.2 mm) 13"x39 1/2"

Butech - Recomendada junta Recommends joint  
colorstuk rapid n antracita B22502005 - 100004298

### PERFIL RUGGINE

V3960170 - 100024179 - G97  
1.5x100 cm (x15.0 mm) 5/8"x39 1/2"

EMBALAJE PACKAGING		x CAJA BOX			x PALET			ADHESIVO
Modelo Model	Piezas	M <sup>2</sup> (1)	Kg (1)	Box	M <sup>2</sup> (1)	Kg (1)	Butech	
Ruggine 33.3x100 cm	4	1.33	21.68	55	73.26	1192	Fr-one n	
Perfil 1.5x100 cm	15	0.45	5.40	28	12.60	151	Fr-one n	

(1) Valores aproximados Approximated values

COLECCIONES COMPLEMENTARIAS COMPLEMENTARY COLLECTIONS	
Queens 20x33.3 cm	pág. 173

# RUGGINE · SHINE

Monoporosa Rectificado  
Rectified Wall Tiles



V2



## RUGGINE PLATINO

V1440031 - 100144503 - G261  
33.3x100 cm (x9.2 mm) 13"x39 1/2"

Butech - Recomendada junta Recommends joint  
colorstuk rapid n blanco B22501001 - 100004294

### PERFIL RUGGINE PLATINO

V3960286 - 100091985 - G97  
1.5x100 cm (x15.0 mm) 5/8"x39 1/2"



## RUGGINE TITANIO

V1440012 - 100142907 - G261  
33.3x100 cm (x9.2 mm) 13"x39 1/2"

Butech - Recomendada junta Recommends joint  
colorstuk rapid n marfil B22502009 - 100004302

### PERFIL RUGGINE TITANIO

V3960289 - 100091986 - G97  
1.5x100 cm (x15.0 mm) 5/8"x39 1/2"



## RUGGINE NÍQUEL

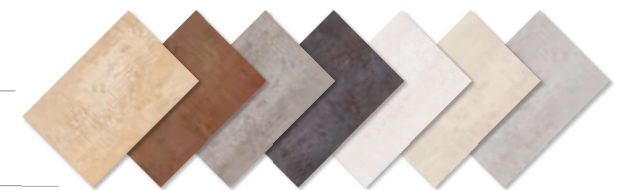
V1440029 - 100144502 - G261  
33.3x100 cm (x9.2 mm) 13"x39 1/2"

Butech - Recomendada junta Recommends joint  
colorstuk rapid n gris B22502013 - 100004305

### PERFIL RUGGINE NÍQUEL

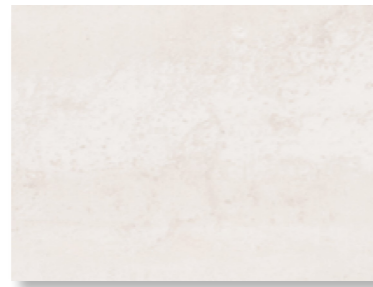
V3960290 - 100091984 - G97  
1.5x100 cm (x15.0 mm) 5/8"x39 1/2"

PAVIMENTO A JUEGO MATCHING FLOOR	
Ferroker 44x66 cm	pág.212-221
Ferroker, Aluminio, Níquel, Platino & Titanio 59.6x120 cm, 59.6x59.6 cm, 45x90 cm & 44.3x44.3 cm	



# RUGGINE · SHINE

Monoporosa  
Wall Tiles



## RUGGINE PLATINO

V1290023 - 100118728 - G218  
33.3x44.6 cm (x8.5mm) 13"x17 1/2"

Butech - Recomienda junta Recommends joint  
colorstuk rapid n blanco B22501001 - 100004294



## RUGGINE TITANIO

V1290025 - 100118729 - G218  
33.3x44.6 cm (x8.5mm) 13"x17 1/2"

Butech - Recomienda junta Recommends joint  
colorstuk rapid n marfil B22502009 - 100004302



## RUGGINE NÍQUEL

V1290028 - 100118727 - G218  
33.3x44.6 cm (x8.5mm) 13"x17 1/2"

Butech - Recomienda junta Recommends joint  
colorstuk rapid n gris B22502013 - 100004305



## RUGGINE ALUMINIO

V1290026 - 100118726 - G218  
33.3x44.6 cm (x8.5mm) 13"x17 1/2"

Butech - Recomienda junta Recommends joint  
colorstuk rapid n manhattan B22502002 - 100004295



### COLECCIONES COMPLEMENTARIAS COMPLEMENTARY COLLECTIONS

Queens 20x33.3 cm pág. 173

### PAVIMENTO A JUEGO MATCHING FLOOR

Ferroker Platino, Níquel, Titanio & Aluminio 44.3x44.3 cm pág. 220-221

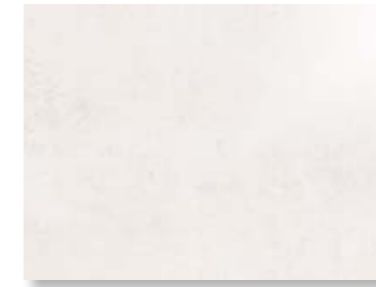


EMBALAJE PACKAGING	x CAJA BOX			x PALET			ADHESIVO
	Modelo Model	Pieces	M <sup>2</sup> (1)	Kg (1)	Box	M <sup>2</sup> (1)	
Ruggine 33.3x44.6 cm	12	1.78	26.11	51	90.89	1331	Feroker n

(1) Valores aproximados Approximated values

# RUGGINE · SHINE

Monoporosa  
Wall Tiles



## SHINE PLATINO

V1290029 - 100120456 - G218  
33.3x44.6 cm (x8.5mm) 13"x17 1/2"

Butech - Recomienda junta Recommends joint  
colorstuk rapid n blanco B22501001 - 100004294



## SHINE NÍQUEL

V1290030 - 100123183 - G218  
33.3x44.6 cm (x8.5mm) 13"x17 1/2"

Butech - Recomienda junta Recommends joint  
colorstuk rapid n gris B22502013 - 100004305



## SHINE DARK

V1290020 - 100117653 - G218  
33.3x44.6 cm (x8.5mm) 13"x17 1/2"

Butech - Recomienda junta Recommends joint  
colorstuk rapid n antracita B22502005 - 100004298

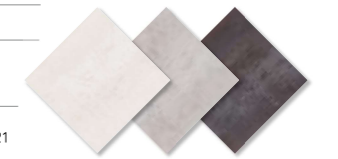


### COLECCIONES COMPLEMENTARIAS COMPLEMENTARY COLLECTIONS

Queens 20x33.3 cm pág. 173

### PAVIMENTO A JUEGO MATCHING FLOOR

Ferroker, Platino & Níquel 44.3x44.3 cm pág. 220-221



EMBALAJE PACKAGING	x CAJA BOX			x PALET		
	Modelo Model	Pieces	M <sup>2</sup> (1)	Kg (1)	Box	M <sup>2</sup> (1)
Shine 33.3x44.6 cm	12	1.78	30.96	51	90.89	1346

(1) Valores aproximados Approximated values

# RUGGINE SHINE

## Monoporosa Rectificado

Rectified Wall Tiles



### PERFIL / PERFIL

1.5x100 cm (x5.0 mm) 5/8"x39 1/2"

RUGGINE CALDERA 100029891 - V3960173 - G97

PERFIL RUGGINE ALUMINIO 100029889 - V3960171 - G97

PERFIL RUGGINE 100024179 - V3960170 - G97



### RUGGINE CALDERA

33.3x100 cm (x9.2 mm) 13"x39 1/2"

100149908 · V1440094 · G261

Butech: *Recomienda junta / Recommends joint*

Colorstuk Rapid N Marron 100236809 - B21522261



### RUGGINE ALUMINIO

33.3x100 cm (x9.2 mm) 13"x39 1/2"

100142906 · V1440008 · G261

Butech: *Recomienda junta / Recommends joint*

Colorstuk Rapid N Manhattan 100236464 - B21522248



### RUGGINE

33.3x100 cm (x9.2 mm) 13"x39 1/2"

100144839 · V1440035 · G261

Butech: *Recomienda junta / Recommends joint*

Colorstuk Rapid N Antracita 100236481 - B21522250

EMBALAJE PACKAGING Modelo Model	x CAJA BOX			x PALET			ADHESIVO*
	Piezas	M² (1)	Kg (1)	Caja	M² (1)	Kg (1)	Butech
Ruggine 33.3x100 cm	4	1.33	21.37	55	73.26	1175	One-flex Premium /
Perfil 1.5x100 cm	15	15.00	5.59	28	42.00	999999	Fr-one n

(1)Valores aproximados. Approximated values

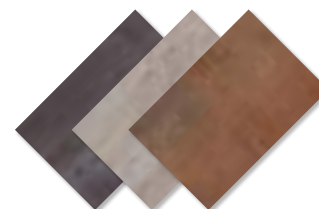
\*Recomendación para soporte de mortero en interiores. \*Interior installation over cement mortar substrate

### PAVIMENTO COMBINABLE FLOOR TILE COMBINATIONS

Serie Ferroker 44x66 cm, 59.6x120 cm,  
59.6x59.6 cm, 45x90 cm & 44.3x44.3 cm

\*\* Consultar disponibilidad de colores según formato /

\*\* Check color availability according to size



# RUGGINE SHINE

**Monoporosa Rectificado**  
Rectified Wall Tiles



RECTIFICADO  
RECTIFIED



MATE-BRILLO  
MATT-GLOSS



DESTONIFICACIÓN  
TONAL VARIATION



**RUGGINE PLATINO**

33.3x100 cm (x9.2 mm) 13"x39 1/2"  
100144503 · V1440031 · G261

Butech: *Recomienda junta / Recommends joint*  
Colorstuk Rapid N Blanco 100236463 - B21522247



**RUGGINE TITANIO**

33.3x100 cm (x9.2 mm) 13"x39 1/2"  
100142907 · V1440012 · G261

Butech: *Recomienda junta / Recommends joint*  
Colorstuk Rapid N Marfil 100236794 - B21522257



**RUGGINE NIQUEL**

33.3x100 cm (x9.2 mm) 13"x39 1/2"  
100144502 · V1440029 · G261

Butech: *Recomienda junta / Recommends joint*  
Colorstuk Rapid N Gris 100236834 - B21522258



**PERFIL / PERFIL**

1.5x100 cm (x5.0 mm) 5/8"x39 1/2"

RUGGINE PLATINO 100091985 - V3960286 - G97

RUGGINE TITANIO 100091986 - V3960289 - G97

RUGGINE NIQUEL 100091984 - V3960290 - G97



**PAVIMENTO COMBINABLE**  
FLOOR TILE COMBINATIONS

Serie Ferroker 44x66 cm, 59.6x120 cm,  
59.6x59.6 cm, 45x90 cm & 44.3x44.3 cm

\*\* Consultar disponibilidad de colores según formato /  
\*\* Check color availability according to size

EMBALAJE PACKAGING Modelo Model	CAJA BOX			PALET			ADHESIVO*
	Piezas	M <sup>2</sup> (1)	Kg (1)	Caja	M <sup>2</sup> (1)	Kg (1)	Butech
Ruggine 33.3x100 cm	4	1.33	21.37	55	73.26	1175	One-flex Premium /
Perfil 1.5x100 cm	15	15.00	5.59	28	42.00	999999	Fr-one n

(1)Valores aproximados. Approximated values

\*Recomendación para soporte de mortero en interiores \*Interior installation over cement mortar substrate

# RUGGINE SHINE

**Monoporosa**  
Wall Tiles



## RUGGINE ALUMINIO

33.3x59.2 cm (x8.6 mm) 13"x23 1/4"

100216427 · V1349977 · G226

Butech: *Recomienda junta / Recommends joint*

Colorstuk Rapid N Manhattan 100236464 - B21522248



## RUGGINE

33.3x59.2 cm (x8.6 mm) 13"x23 1/4"

100216426 · V1349995 · G226

Butech: *Recomienda junta / Recommends joint*

Colorstuk Rapid N Antracita 100236481 - B21522250

EMBALAJE PACKAGING Modelo Model	x CAJA BOX			x PALET			ADHESIVO*
	Piezas	M <sup>2</sup> (1)	Kg (1)	Caja	M <sup>2</sup> (1)	Kg (1)	Butech
Ruggine 33.3x59.2 cm	6	1.18	18.76	48	56.78	901	Tixocem + / One-flex Premium

(1)Valores aproximados · *Approximated values*

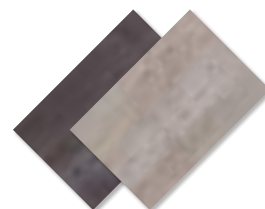
\*Recomendación para soporte de mortero en interiores · *Interior installation over cement mortar substrate*

## PAVIMENTO COMBINABLE FLOOR TILE COMBINATIONS

Serie Ferroker 44x66 cm, 59.6x120 cm,  
59.6x59.6 cm, 45x90 cm & 44.3x44.3 cm

\*\* Consultar disponibilidad de colores según formato /

\*\* *Check color availability according to size*



# RUGGINE SHINE

**Monoporosa**  
Wall Tiles



**RUGGINE PLATINO**

33.3x59.2 cm (x8.6 mm) 13"x23 1/4"  
100216460 · V1349985 · G226

Butech: *Recomienda junta / Recommends joint*  
Colorstuk Rapid N Blanco 100236463 - B21522247



**RUGGINE TITANIO**

33.3x59.2 cm (x8.6 mm) 13"x23 1/4"  
100216428 · V1349988 · G226

Butech: *Recomienda junta / Recommends joint*  
Colorstuk Rapid N Marfil 100236794 - B21522257



**RUGGINE NIQUEL**

33.3x59.2 cm (x8.6 mm) 13"x23 1/4"  
100216417 · V1349992 · G226

Butech: *Recomienda junta / Recommends joint*  
Colorstuk Rapid N Gris 100236834 - B21522258



**PAVIMENTO COMBINABLE**  
FLOOR TILE COMBINATIONS

Serie Ferroker 44x66 cm, 59.6x120 cm,  
59.6x59.6 cm, 45x90 cm & 44.3x44.3 cm

\*\* Consultar disponibilidad de colores según formato /  
\*\* Check color availability according to size

EMBALAJE PACKAGING	CAJA BOX			PALET			ADHESIVO*
	Modelo Model	Piezas	M <sup>2</sup> (1)	Kg (1)	Caja	M <sup>2</sup> (1)	Kg (1)
Ruggine 33.3x59.2 cm	6	1.18	18.76	48	56.78	901	Tixocem + / One-flex Premium

(1)Valores aproximados. Approximated values  
\*Recomendación para soporte de mortero en interiores \*Interior installation over cement mortar substrate