

PERSIA

Revestimiento Monoporosa Rectificado / Wall Tiles Rectified



PERSIA
45x120x1,03cm P3580005 / 100179238 G270

PERFIL PERSIA
1,5x120cm P3810004 / 100181299 G102
1,5x45cm P3800001 / 100181322 G92

Butech recomienda junta / Butech recommends joint:
Colorstuk Rapid n Blanco B22501001 / 100004294

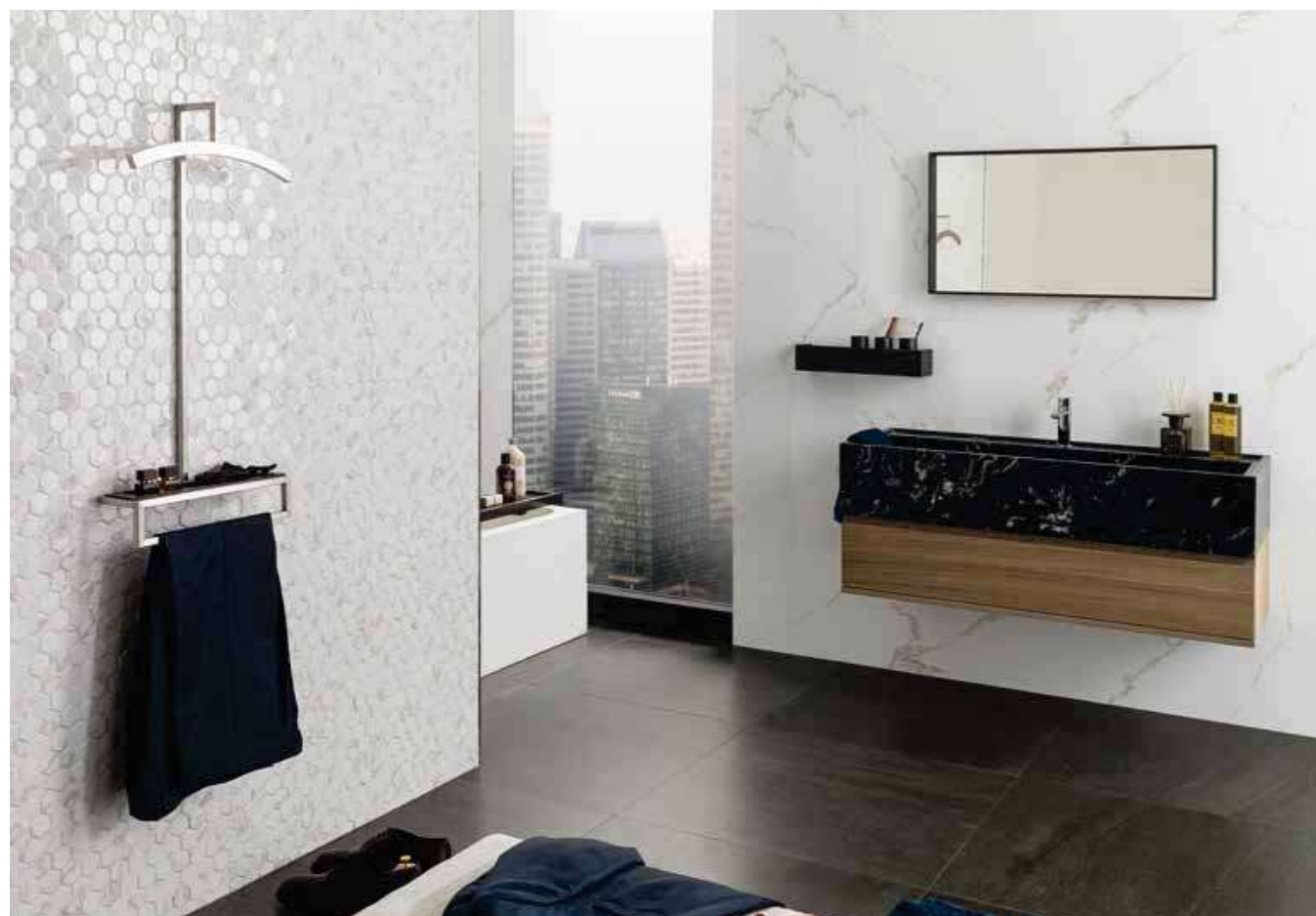
TECHNICAL SPECS · INFORMACIÓN TÉCNICA

EMBALAJE / PACKING

FORMATO cm	PZ/CJ	M2/CJ	CJ/PAL	M2/PAL	*KG/CJ	*KG/PAL	Adhesivo
45x120cm	3	1,62	40	64,80	29,82	1192,74	Fr-one n
1,5x120cm	15	0,54	28	15,12	7,42	207,65	Fr-one n
1,5x45cm	20	0,27	56	15,12	3,67	205,35	Fr-one n

*valores aproximados. *approximated values.

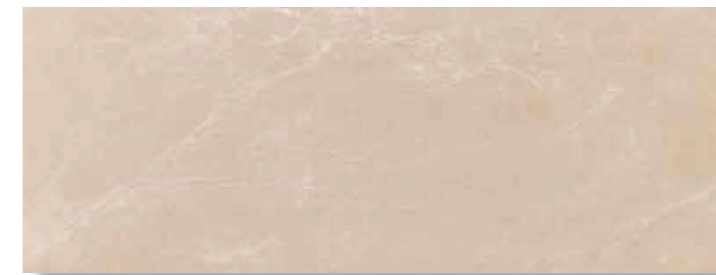
PAVIMENTO COMBINABLE: SERIE PERSIA 59,6x59,6cm - PAG.199
FLOOR TILES COMBINATIONS: PERSIA SERIES 59,6x59,6cm - PAG.199



PERSIA 45x120cm & FOREST PERSIA 31,6x59,2cm

VENEZIA

Revestimiento Monoporosa Rectificado / Wall Tiles Rectified



VENEZIA MARFIL
45x120x1cm P3580002 / 100179793 G270

PERFIL VENEZIA MARFIL
1,5x120cm P3810002 / 100181323 G102
1,5x45cm P3800004 / 100181288 G92

Butech recomienda junta / Butech recommends joint:
Colorstuk Rapid n Marfil B22502009 / 100004302



VENEZIA TOPO
45x120x1cm P3580000 / 100179815 G270

PERFIL VENEZIA TOPO
1,5x120cm P3810003 / 100181294 G102
1,5x45cm P3800002 / 100181279 G92

Butech recomienda junta / Butech recommends joint:
Colorstuk Rapid n Tabaco B22502011 / 100004304



VENEZIA PULPIS
45x120x1cm P3580007 / 100179795 G270

PERFIL VENEZIA PULPIS
1,5x120cm P3810005 / 100181306 G102
1,5x45cm P3800006 / 100181278 G92

Butech recomienda junta / Butech recommends joint:
Colorstuk Rapid n Moka B21522220 / 100060549

TECHNICAL SPECS · INFORMACIÓN TÉCNICA

EMBALAJE / PACKING

FORMATO cm	PZ/CJ	M2/CJ	CJ/PAL	M2/PAL	*KG/CJ	*KG/PAL	Adhesivo
45x120cm	3	1,62	40	64,80	29,82	1192,74	Fr-one n
1,5x120cm	15	0,54	28	15,12	7,42	207,65	Fr-one n
1,5x45cm	20	0,27	56	15,12	3,67	205,35	Fr-one n

*valores aproximados. *approximated values.

PAVIMENTO COMBINABLE: SERIE VENEZIA 59,6x59,6cm - PAG.196
FLOOR TILES COMBINATIONS: VENEZIA SERIES 59,6x59,6cm - PAG.196

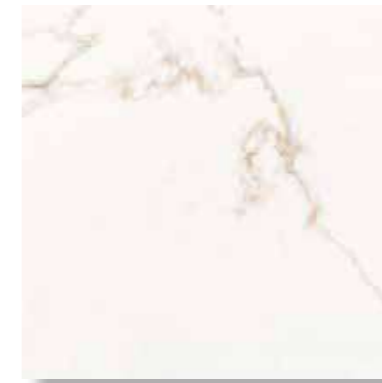




BALI BLANCO 59,6x59,6cm

PERSIA

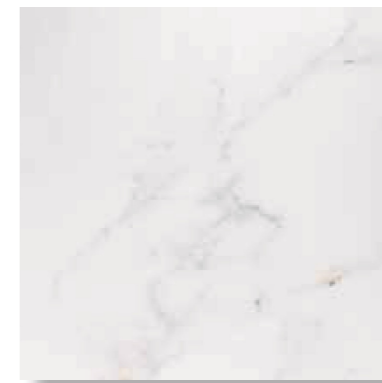
Gres Rectificado / Rectified Floor Tiles



PERSIA P-R
59,6x59,6x1,1cm P1856999 / 100179118 G347
Butech recomienda junta / Butech recommends joint:
Colorstuk Rapid n Blanco B22501001 / 100004294

BARI

Gres Rectificado / Rectified Floor Tiles



BARI BLANCO P-R
59,6x59,6x1,1cm P1856957 / 100155618 G347
Butech recomienda junta / Butech recommends joint:
Colorstuk Rapid n Blanco B22501001 / 100004294

TECHNICAL SPECS · INFORMACIÓN TÉCNICA

EMBALAJE / PACKING

FORMATO cm	PZ/CJ	M2/CJ	CJ/PAL	M2/PAL	*KG/CJ	*KG/PAL	Adhesivo
59,6x59,6cm	4	1,42	32	45,47	35,04	1121,3	one-flex n / maxifluid
10x44,6cm Zócalo	20	0,87	72	62,84	18,79	1352,68	one-flex n
31,6x59,6cm Huella Tec.	2	0,42	48	19,97	11,33	543,84	one-flex n / maxifluid
31,6x59,6cm Huella Tec. Esq.	1	0,21	48	9,98	5,67	271,92	one-flex n / maxifluid

*valores aproximados. *approximated values.

1
INTENSIDAD DE TRÁNSITO PEATONAL: TRÁNSITO MODERADO
INTENSITY OF PEDESTRIAN TRANSIT: MODERATE TRANSIT

ZÓCALO	10x44,6cm	
PERSIA	P4328113 / 100180414	G7
BARI BLANCO	P8323609 / 100183950	G7



- HUELLA TÉCNICA 31,6x59,6cm

			ESQUINA DERECHA		ESQUINA IZQUIERDA	
PERSIA	P9210434 / 100193853	G130	P9210440 / 100193949	G150	P9210437 / 100193849	G150
BARI BLANCO	P9210302 / 100169575	G130	P9210412 / 100193835	G150	P9210406 / 100193845	G150