

DOVER · DOVER LINE

Revestimiento Monoporosa Rectificado / Wall Tiles Rectified



DOVER ACERO
31,6x90x0,9cm P3470759 / 100155567 G261
Butech recomienda junta / Butech recommends joint: Colorstuk Rapid n Gris B22502013 / 100004305

PERFIL DOVER ACERO
1,5x31,6cm P6209109 / 100156682 G77



DOVER LINE ACERO
31,6x90x0,9cm P3470767 / 100155900 G271
Butech recomienda junta / Butech recommends joint: Colorstuk Rapid n Gris B22502013 / 100004305



DOVER CALIZA
31,6x90x0,9cm P3470758 / 100155616 G261
Butech recomienda junta / Butech recommends joint: Colorstuk Rapid n Gris B22502013 / 100004305

PERFIL DOVER CALIZA
1,5x31,6cm P6209108 / 100156684 G77



DOVER LINE CALIZA
31,6x90x0,9cm P3470766 / 100155902 G271
Butech recomienda junta / Butech recommends joint: Colorstuk Rapid n Gris B22502013 / 100004305



DOVER ARENA
31,6x90x0,9cm P3470756 / 100155613 G261
Butech recomienda junta / Butech recommends joint: Colorstuk Rapid n Gris B22502013 / 100004305

PERFIL DOVER ARENA
1,5x31,6cm P6209110 / 100156683 G77

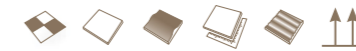


DOVER LINE ARENA
31,6x90x0,9cm P3470765 / 100155901 G271
Butech recomienda junta / Butech recommends joint: Colorstuk Rapid n Gris B22502013 / 100004305



DOVER MODERN LINE · DOVER SPIGA

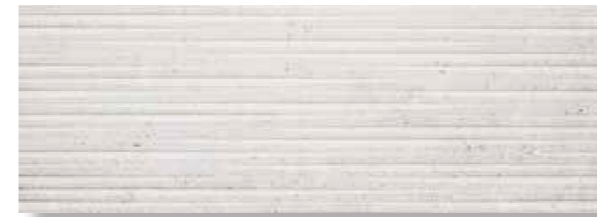
Revestimiento Monoporosa Rectificado / Wall Tiles Rectified



DOVER MODERN LINE ACERO
31,6x90x1,14cm P3470761 / 100155622 G271
Butech recomienda junta / Butech recommends joint: Colorstuk Rapid n Gris B22502013 / 100004305



DOVER SPIGA ACERO
31,6x90x1,04cm P3470775 / 100155972 G271
Butech recomienda junta / Butech recommends joint: Colorstuk Rapid n Gris B22502013 / 100004305



DOVER MODERN LINE CALIZA
31,6x90x1,14cm P3470760 / 100155624 G271
Butech recomienda junta / Butech recommends joint: Colorstuk Rapid n Gris B22502013 / 100004305



DOVER SPIGA CALIZA
31,6x90x1,04cm P3470770 / 100155975 G271
Butech recomienda junta / Butech recommends joint: Colorstuk Rapid n Gris B22502013 / 100004305



DOVER MODERN LINE ARENA
31,6x90x1,14cm P3470762 / 100155623 G271
Butech recomienda junta / Butech recommends joint: Colorstuk Rapid n Gris B22502013 / 100004305



DOVER SPIGA ARENA
31,6x90x1,04cm P3470773 / 100155974 G271
Butech recomienda junta / Butech recommends joint: Colorstuk Rapid n Gris B22502013 / 100004305

TECHNICAL SPECS · INFORMACIÓN TÉCNICA

EMBALAJE / PACKING

FORMATO cm	PZ/CJ	M2/CJ	CJ/PAL	M2/PAL	*KG/CJ	*KG/PAL	Adhesivo
31,6x90cm	4	1,14	57	64,84	19,58	1116,19	Fr-one n
1,5x31,6cm	30	0,28	42	11,94	3,83	160,93	Fr-one n

*valores aproximados. *approximated values.



PAVIMENTO COMBINABLE: SERIE DOVER 59,6x59,6cm · PAG.176
FLOOR TILES COMBINATIONS: DOVER SERIES 59,6x59,6cm · PAG.176



TECHNICAL SPECS · INFORMACIÓN TÉCNICA

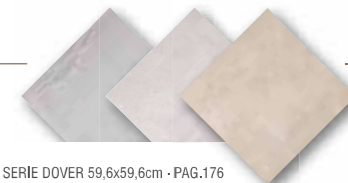
EMBALAJE / PACKING

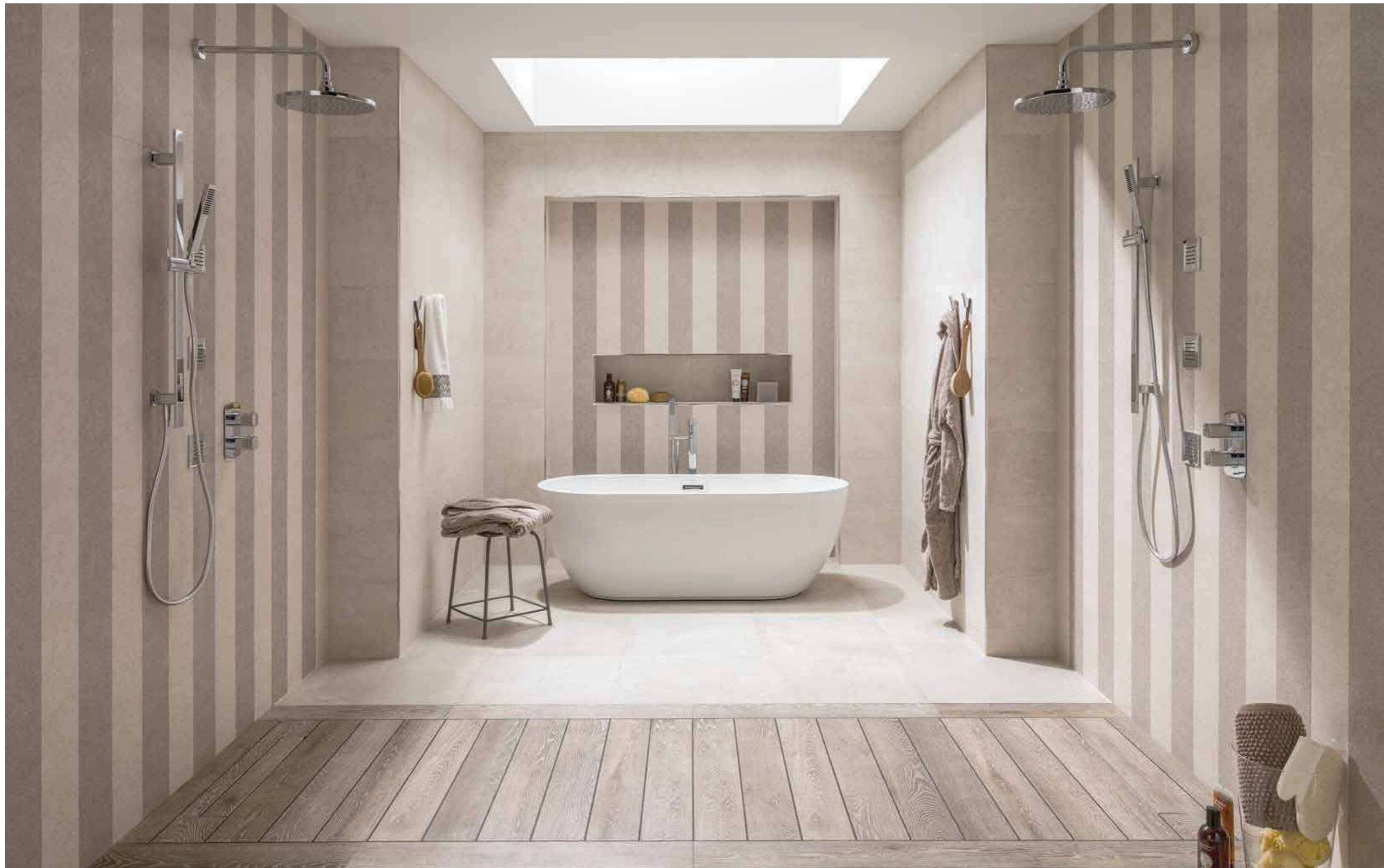
FORMATO cm	PZ/CJ	M2/CJ	CJ/PAL	M2/PAL	*KG/CJ	*KG/PAL	Adhesivo
31,6x90cm Modern Line	3	0,85	57	48,63	14,69	837,14	Fr-one n
31,6x90cm Spiga	3	0,85	66	56,31	13,29	876,74	Fr-one n

*valores aproximados. *approximated values.



PAVIMENTO COMBINABLE: SERIE DOVER 59,6x59,6cm · PAG.176
FLOOR TILES COMBINATIONS: DOVER SERIES 59,6x59,6cm · PAG.176

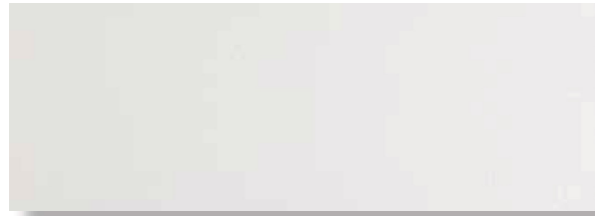




DOVER LINE ARENA 6 DOVER ARENA 31,6x90cm

DOVER NIEVE

Revestimiento Monoporosa Rectificado / Wall Tiles Rectified



DOVER NIEVE
31,6x90x0,9cm
Butech recomienda junta / Butech recommends joint: Colorstuk Rapid n Blanco B22501001 / 100004294

P3470840 / 100179263 G261

PERFIL DOVER NIEVE
1,5x31,6cm

P6209124 / 100180401 G77



DOVER MODERN LINE NIEVE
31,6x90x1,14cm
Butech recomienda junta / Butech recommends joint: Colorstuk Rapid n Blanco B22501001 / 100004294

P3470839 / 100179303 G271



MOSAICO DOVER NIEVE
31,6x90x1,13cm
Butech recomienda junta / Butech recommends joint: Colorstuk Rapid n Blanco B22501001 / 100004294

P3470838 / 100179278 G271



DOVER ANTIQUE

Revestimiento Monoporosa Rectificado / Wall Tiles Rectified



DOVER ANTIQUE
31,6x90x0,9cm
Butech recomienda junta / Butech recommends joint: Colorstuk Rapid n Cemento B22502004 / 100004297

P3470757 / 100155610 G271

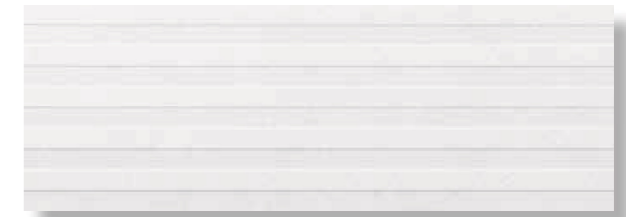
BELICE

Revestimiento Monoporosa Rectificado / Wall Tiles Rectified



BELICE ACERO
31,6x90x0,91cm
Butech recomienda junta / Butech recommends joint: Colorstuk Rapid n Gris B22502013 / 100004305

P3470745 / 100155581 G271



BELICE CALIZA
31,6x90x0,91cm
Butech recomienda junta / Butech recommends joint: Colorstuk Rapid n Gris B22502013 / 100004305

P3470752 / 100155582 G271



BELICE ARENA
31,6x90x0,91cm
Butech recomienda junta / Butech recommends joint: Colorstuk Rapid n Beige B22502016 / 100004308

P3470777 / 100156161 G271

TECHNICAL SPECS · INFORMACIÓN TÉCNICA

EMBALAJE / PACKING							
FORMATO cm	PZ/CJ	M2/CJ	CJ/PAL	M2/PAL	*KG/CJ	*KG/PAL	Adhesivo
31,6x90cm	4	1,14	57	64,84	17,58	1002,29	Fr-one n
31,6x90cm Modern	3	0,85	57	48,63	16,24	926,09	Fr-one n
31,6x90cm Mosaico	3	0,85	66	56,31	14,09	929,97	Fr-one n
1,5x31,6cm	30	0,28	42	11,94	3,83	160,93	Fr-one n

*valores aproximados. *approximated values.

TECHNICAL SPECS · INFORMACIÓN TÉCNICA

EMBALAJE / PACKING							
FORMATO cm	PZ/CJ	M2/CJ	CJ/PAL	M2/PAL	*KG/CJ	*KG/PAL	Adhesivo
31,6x90cm	4	1,14	57	64,84	19,58	1116,19	Fr-one n

*valores aproximados. *approximated values.

i - DOVER ANTIQUE ESTÁ FORMADO POR 6 DECORADOS DISTINTOS ALEATORIOS.
- DOVER ANTIQUE RANGE IS MADE IN 6 DIFFERENT RANDOM PATTERNS.

FOREST

Revestimiento Monoporosa / Wall Tiles



FOREST CHELSEA NUT
31,6x59,2x1,1cm P3219287 / 100173327 G235
Butech recomienda junta / Butech recommends joint:
Colorstuk Rapid n Tabaco B22502011 / 100004304



FOREST CHELSEA CAMEL
31,6x59,2x1,1cm P3219289 / 100173326 G235
Butech recomienda junta / Butech recommends joint:
Colorstuk Rapid n Tabaco B22502011 / 100004304



FOREST SLATE
31,6x59,2x1,1cm P3219290 / 100173335 G235
Butech recomienda junta / Butech recommends joint:
Colorstuk Rapid n Antracita B22502005 / 100004298



FOREST SILVER
31,6x59,2x1,1cm P3219286 / 100173319 G267
Butech recomienda junta / Butech recommends joint:
Colorstuk Rapid n Cemento B22502004 / 100004297



FOREST PERSIA
31,6x59,2x1,1cm P3219295 / 100179117 G235
Butech recomienda junta / Butech recommends joint:
Colorstuk Rapid n Blanco B22501001 / 100004294



FOREST CARRARA BLANCO
31,6x59,2x1,1cm P3219288 / 100173324 G235
Butech recomienda junta / Butech recommends joint:
Colorstuk Rapid n Blanco B22501001 / 100004294



FOREST MARMI CHINA
31,6x59,2x1,1cm P3219285 / 100173334 G235
Butech recomienda junta / Butech recommends joint:
Colorstuk Rapid n Blanco B22501001 / 100004294



TECHNICAL SPECS · INFORMACIÓN TÉCNICA

EMBALAJE / PACKING							
FORMATO cm	PZ/CJ	M2/CJ	CJ/PAL	M2/PAL	*KG/CJ	*KG/PAL	Adhesivo
31,6x59,2cm	4	0,7	72	50,14	12,08	839,49	Ff-one n

**valores aproximados. *approximated values.*

DOVER · DOVER MODERN LINE

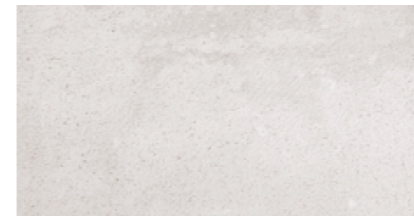
Revestimiento Monoporosa / Wall Tiles



DOVER ACERO
31,6x59,2x0,9cm P3219280 / 100157353 G226
Butech recomienda junta / Butech recommends joint:
Colorstuk Rapid n Gris B22502013 / 100004305



DOVER MODERN LINE ACERO
31,6x59,2x1,14cm P3219281 / 100157373 G233
Butech recomienda junta / Butech recommends joint:
Colorstuk Rapid n Gris B22502013 / 100004305



DOVER CALIZA
31,6x59,2x0,9cm P3219283 / 100157356 G226
Butech recomienda junta / Butech recommends joint:
Colorstuk Rapid n Gris B22502013 / 100004305



DOVER MODERN LINE CALIZA
31,6x59,2x1,14cm P3219282 / 100157374 G233
Butech recomienda junta / Butech recommends joint:
Colorstuk Rapid n Gris B22502013 / 100004305



DOVER ANTIQUE

Revestimiento Monoporosa / Wall Tiles



DOVER ANTIQUE
31,6x59,2x0,9cm P3219277 / 100157355 G233
Butech recomienda junta / Butech recommends joint:
Colorstuk Rapid n Cemento B22502004 / 100004297

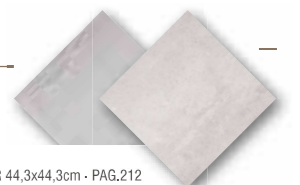
TECHNICAL SPECS · INFORMACIÓN TÉCNICA

EMBALAJE / PACKING							
FORMATO cm	PZ/CJ	M2/CJ	CJ/PAL	M2/PAL	*KG/CJ	*KG/PAL	Adhesivo
31,6x59,2cm	6	1,13	72	81,22	15,72	1131,84	Ff-one n
31,6x59,2cm Modern	5	0,94	72	67,68	14,35	1033,2	Ff-one n

**valores aproximados. *approximated values.*



PAVIMENTO COMBINABLE: SERIE DOVER 44,3x44,3cm - PAG.212
FLOOR TILES COMBINATIONS: DOVER SERIES 44,3x44,3cm - PAG.212
- DOVER ANTIQUE ESTÁ FORMADO POR 9 DECORADOS DISTINTOS ALEATORIOS.
- DOVER ANTIQUE RANGE IS MADE IN 9 DIFFERENT RANDOM PATTERNS.





DOVER ACERO & DOVER MODERN LINE 31,6x59,2cm

DOVER

Gres Porcellanato Rectificado · Color Masa / Rectified Porcellanato Tiles · Coloured Biscuit



DOVER ACERO S-R
80x80x1,1cm P1760081 / 100155669 G369
59,6x59,6x1,1cm P1856952 / 100155668 G354
Butech recomienda junta / Butech recommends joint:
Colorstuk Rapid n Gris B22502013 / 100004305



DOVER ACERO ANTISLIP S-R
59,6x59,6x1,1cm P1856966 / 100156775 G359



DOVER TOPO S-R
80x80x1,1cm P1760085 / 100155626 G369
59,6x59,6x1,1cm P1856956 / 100155625 G354
Butech recomienda junta / Butech recommends joint:
Colorstuk Rapid n Cemento B22502004 / 100004297



DOVER TOPO ANTISLIP S-R
59,6x59,6x1,1cm P1856965 / 100156777 G359



DOVER ARENA S-R
59,6x59,6x1,1cm P1856954 / 100155614 G354
Butech recomienda junta / Butech recommends joint:
Colorstuk Rapid n Gris B22502013 / 100004305



DOVER ARENA ANTISLIP S-R
59,6x59,6x1,1cm P1856967 / 100156776 G359



DOVER CALIZA S-R
80x80x1,1cm P1760084 / 100155621 G369
59,6x59,6x1,1cm P1856955 / 100155620 G354
Butech recomienda junta / Butech recommends joint:
Colorstuk Rapid n Gris B22502013 / 100004305



DOVER CALIZA ANTISLIP S-R
59,6x59,6x1,1cm P1857024 / 100189014 G359



*Para la confección del acabado antislip y con el objetivo de mejorar las propiedades higiénicas, se han eliminado las imágenes más claras de la serie original.
*For the preparation of the antislip finish and to improve the hygienic properties, the clearest images of the original range have been removed.



DOVER ANTIQUE S-R
80x80x1,1cm P1760082 / 100155612 G372
59,6x59,6x1,1cm P1856953 / 100155611 G359
Butech recomienda junta / Butech recommends joint:
Colorstuk Rapid n Cemento B22502004 / 100004297



DOVER ARENA 59,6x59,6cm G CHESTER CASTAÑO 14,3x90cm

TECHNICAL SPECS · INFORMACIÓN TÉCNICA

EMBALAJE / PACKING

FORMATO cm	PZ/CJ	M2/CJ	CJ/PAL	M2/PAL	*KG/CJ	*KG/PAL	Adhesivo
80x80cm	2	1,28	40	51,2	33,9	1355,48	one-flex n / maxifluid
59,6x59,6cm	4	1,42	32	45,47	37,24	1127,62	one-flex n / maxifluid
9,6x9,6cm Zócalo	18	0,97	56	54,07	23,25	1301,92	one-flex n
9x80cm	12	0,86	42	36,29	23,16	972,72	one-flex n
31,6x59,6cm Huella Tec.	2	0,42	48	19,97	11,33	543,84	one-flex n / maxifluid
31,6x59,6cm Huella Tec.Esp.	1	0,21	48	9,98	5,67	271,92	one-flex n / maxifluid

*valores aproximados. *approximated values.

i INTENSIDAD DE TRÁNSITO PEATONAL: TRÁNSITO INTENSO
INTENSITY OF PEDESTRIAN TRANSIT: HARD TRANSIT
- DOVER ANTIQUE ESTÁ FORMADO POR 8 DECORADOS DISTINTOS ALEATORIOS.
- DOVER ANTIQUE RANGE IS MADE IN 8 DIFFERENT RANDOM PATTERNS.

ZÓCALO	9x80cm	ZÓCALO	9x59,6cm
DOVER ACERO	P4160015 / 100156555 G63	DOVER ACERO	P9210251 / 100156554 G30
DOVER CALIZA	P4160019 / 100156559 G63	DOVER CALIZA	P9210253 / 100156558 G30
DOVER TOPO	P4160018 / 100156561 G63	DOVER TOPO	P9210252 / 100156560 G30
DOVER ARENA		DOVER ARENA	P9210250 / 100156556 G30

HUELLA TÉCNICA 31,6x59,6cm	ESQUINA DERECHA	ESQUINA IZQUIERDA	
DOVER ACERO	P9210263 / 100156674 G130	P9210255 / 100156670 G150	
DOVER ACERO ANT.	P9210268 / 100156798 G130	P9210273 / 100156795 G150	
DOVER CALIZA	P9210259 / 100156676 G130	P9210258 / 100156672 G150	
DOVER CALIZA ANT.	P9210401 / 100193410 G130	P9210400 / 100193400 G150	
DOVER TOPO	P9210262 / 100156677 G130	P9210256 / 100156673 G150	
DOVER TOPO ANT.	P9210269 / 100156820 G130	P9210275 / 100156797 G150	
DOVER ARENA	P9210261 / 100156675 G130	P9210257 / 100156671 G150	
DOVER ARENA ANT.	P9210270 / 100156799 G130	P9210271 / 100156796 G150	
HUELLA TÉCNICA 31,6x80cm	G153	HUELLA TÉCNICA ESQ. DER/IZQ. 31,6x80cm	G181

DOVER

Gres Porcellanato / Porcellanato Tiles



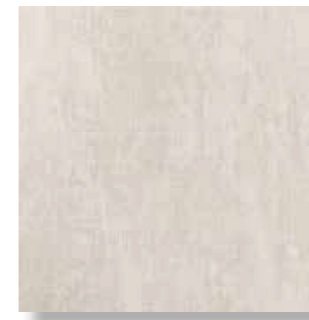
DOVER ACERO
44,3x44,3x1cm P2460065 / 100157354 G311
Butech recomienda junta / Butech recommends joint:
Colorstuk Rapid n Manhattan B22502002 / 100004295



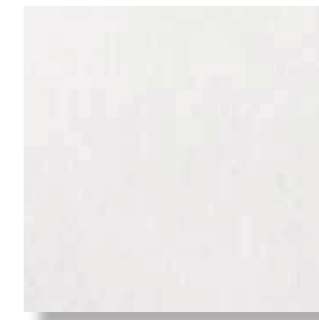
DOVER CALIZA
44,3x44,3x1cm P2460064 / 100157357 G311
Butech recomienda junta / Butech recommends joint:
Colorstuk Rapid n Gris B22502013 / 100004305

SAFARI

Gres Porcellanato / Porcellanato Tiles



SAFARI ARENA
44,3x44,3x1cm P2460071 / 100177519 G311
Butech recomienda junta / Butech recommends joint:
Colorstuk Rapid n Beige B22502016 / 100004308



SAFARI CALIZA
44,3x44,3x1cm P2460072 / 100177540 G311
Butech recomienda junta / Butech recommends joint:
Colorstuk Rapid n Marfil B22502009 / 100004302

PARK

Gres Porcellanato / Porcellanato Tiles



PARK GRIS
44,3x44,3x1cm P2460068 / 100157370 G311
Butech recomienda junta / Butech recommends joint:
Colorstuk Rapid n Manhattan B22502002 / 100004295



PARK ARENA
44,3x44,3x1cm P2460066 / 100157372 G311
Butech recomienda junta / Butech recommends joint:
Colorstuk Rapid n Gris B22502013 / 100004305

JAPAN

Gres Porcellanato / Porcellanato Tiles



JAPAN BLANCO
44,3x44,3x1cm P2460048 / 100140546 G311
Butech recomienda junta / Butech recommends joint:
Colorstuk Rapid n Gris B22502013 / 100004305



JAPAN MARINE
44,3x44,3x1cm P2460049 / 100140547 G311
Butech recomienda junta / Butech recommends joint:
Colorstuk Rapid n Cemento B22502004 / 100004297

TECHNICAL SPECS · INFORMACIÓN TÉCNICA

EMBALAJE / PACKING							
FORMATO cm	PZ/CJ	M2/CJ	CJ/PAL	M2/PAL	*KG/CJ	*KG/PAL	Adhesivo
44,3x44,3cm	5	0,98	66	64,76	22,65	1494	flexitec n
10x44,3cm Zócalo	20	0,89	72	63,79	18,34	1320,48	one-flex n

*valores aproximados. *approximated values.

i INTENSIDAD DE TRÁNSITO PEATONAL: TRÁNSITO INTENSO
INTENSITY OF PEDESTRIAN TRANSIT: HARD TRANSIT

ZÓCALO 10x44,3cm			
DOVER ACERO	P8035368 / 100159645	G7	
DOVER CALIZA	P8035367 / 100159646	G7	
PARK ARENA	P8270070 / 100158750	G7	
PARK GRIS	P8270069 / 100158749	G7	

- HUELLA TÉCNICA 31,6x44,3cm		ESQUINA DERECHA	ESQUINA IZQUIERDA
DOVER / PARK	G125	G138	G138

TECHNICAL SPECS · INFORMACIÓN TÉCNICA

EMBALAJE / PACKING							
FORMATO cm	PZ/CJ	M2/CJ	CJ/PAL	M2/PAL	*KG/CJ	*KG/PAL	Adhesivo
44,3x44,3cm	5	0,98	66	64,76	22,65	1494	flexitec n

*valores aproximados. *approximated values.

i INTENSIDAD DE TRÁNSITO PEATONAL: TRÁNSITO MEDIO
INTENSITY OF PEDESTRIAN TRANSIT: MEDIUM TRANSIT