

# Ageless

7 COLOURS

2 SIZES

1 SURFACE

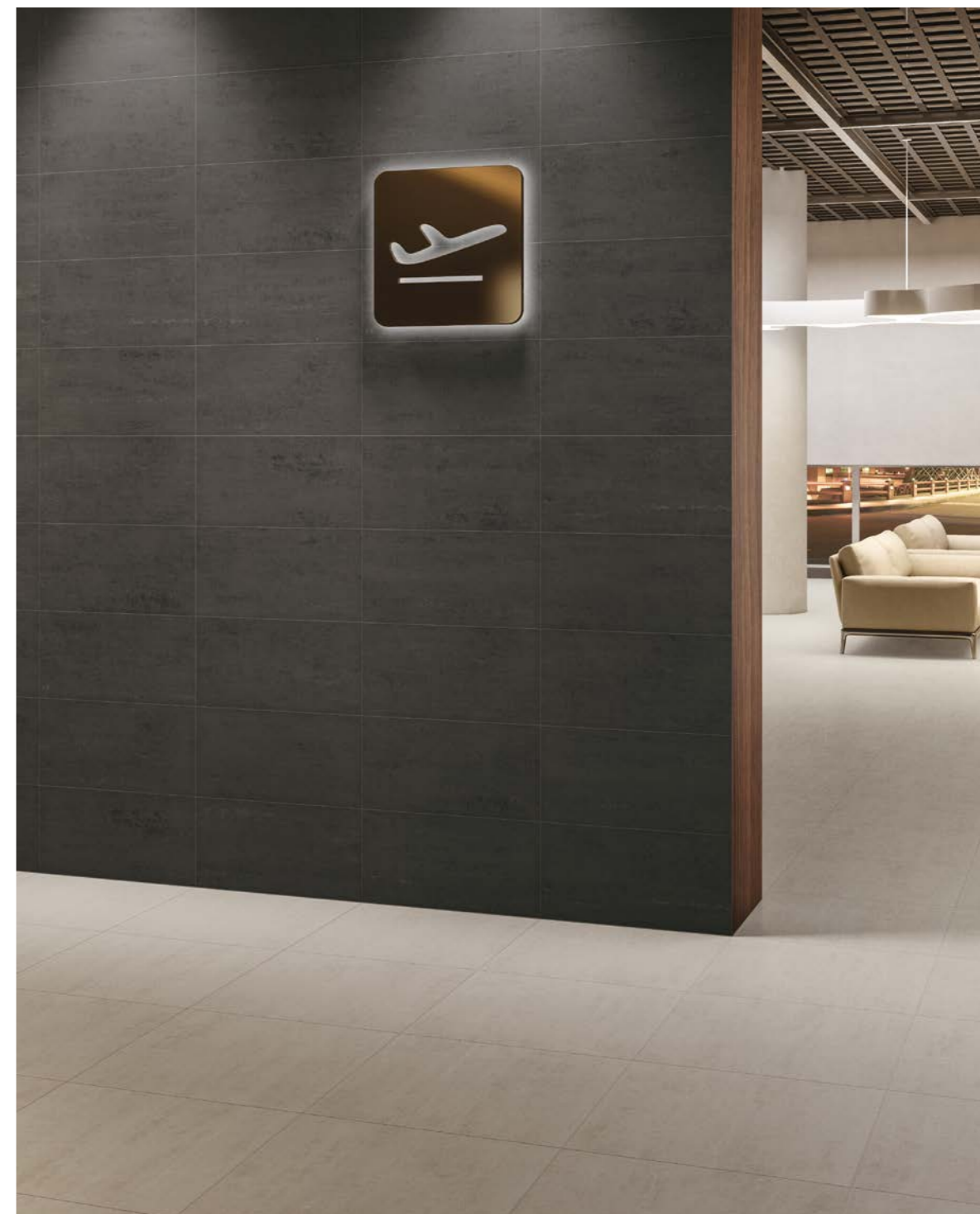
A collection inspired by the aesthetics of industrial concrete resin. The Piemme laboratories have worked to reproduce the pleasant aesthetic effect with a ceramic twist and a light movement of the typical directional streaks associated with the manual or mechanized laying of mortar.

Una collezione ispirata all'estetica della resina-cemento industriale. I laboratori Piemme hanno lavorato per riprodurre in chiave ceramica il gradevole effetto estetico, con un movimento leggero delle tipiche striature direzionali, date dalla stesura manuale o meccanizzata della malta.

Eine am Aussehen von industriellem Zementharz inspirierte Kollektion. Die Produktentwickler von Piemme haben intensiv daran gearbeitet, die attraktive Optik nachzuempfinden, die durch die leichte Bewegung der typischen, mit dem manuellen oder mechanischen Auftrag des Mörtels erzeugten, richtungsgebundenen Rillen entsteht.

Une collection inspirée du ciment-résine industriel. Les laboratoires Piemme se sont penchés sur la superbe esthétique de ce matériau pour la traduire en céramique en reproduisant le mouvement léger des stries qui se forment généralement lors de l'application manuelle ou mécanique du mortier.

## Ageless



Informazioni Tecniche  
Technical Information

Ceramiche Piemme propone la gamma “Contract”: una linea di prodotti versatile ed essenziale, dedicata sia agli ambienti residenziali che pubblici ad alta frequentazione. La gamma “Contract” unisce una ricerca estetica sobria ad elevate caratteristiche tecniche e prestazionali, per supportare il progettista nella scelta delle finiture in tutti gli spazi della quotidianità, pubblica e privata.

“Contract” range

Ceramiche Piemme presents its “Contract” range: a versatile line of products. Designed for both residential and busy public environments, the “Contract” range combines a sober aesthetic style with superior technical characteristics and performances, to support the designer in choosing the finishes for all the public and private spaces of contemporary everyday life.

Linie “Contract”

Ceramiche Piemme präsentiert die Linie “Contract”: Eine vielseitige Produktpalette, die sich an den Wohnungsbau ebenso wie an vielbesuchte öffentliche Bereiche wendet. Sie vereint eine schlichte Optik mit hohen technischen Eigenschaften und Leistungen, die den Planer in der Wahl der Oberflächen für alle - öffentlichen wie privaten - Räume des täglichen Lebens unterstützt.

Collection « Contract »

Ceramiche Piemme présente sa collection « Contract » : une collection de produits polyvalents, faite pour les cadres résidentiels et publics très fréquentés. La collection « Contract » conjugue une esthétique sobre avec une très grande performance technique pour que le designer choisisse en toute liberté les finitions pour tous les espaces du quotidien, publics comme privés.





## Sahara / Europe

The aesthetic result is combined with the tried and trusted technical performance of the latest generation of porcelain stoneware.

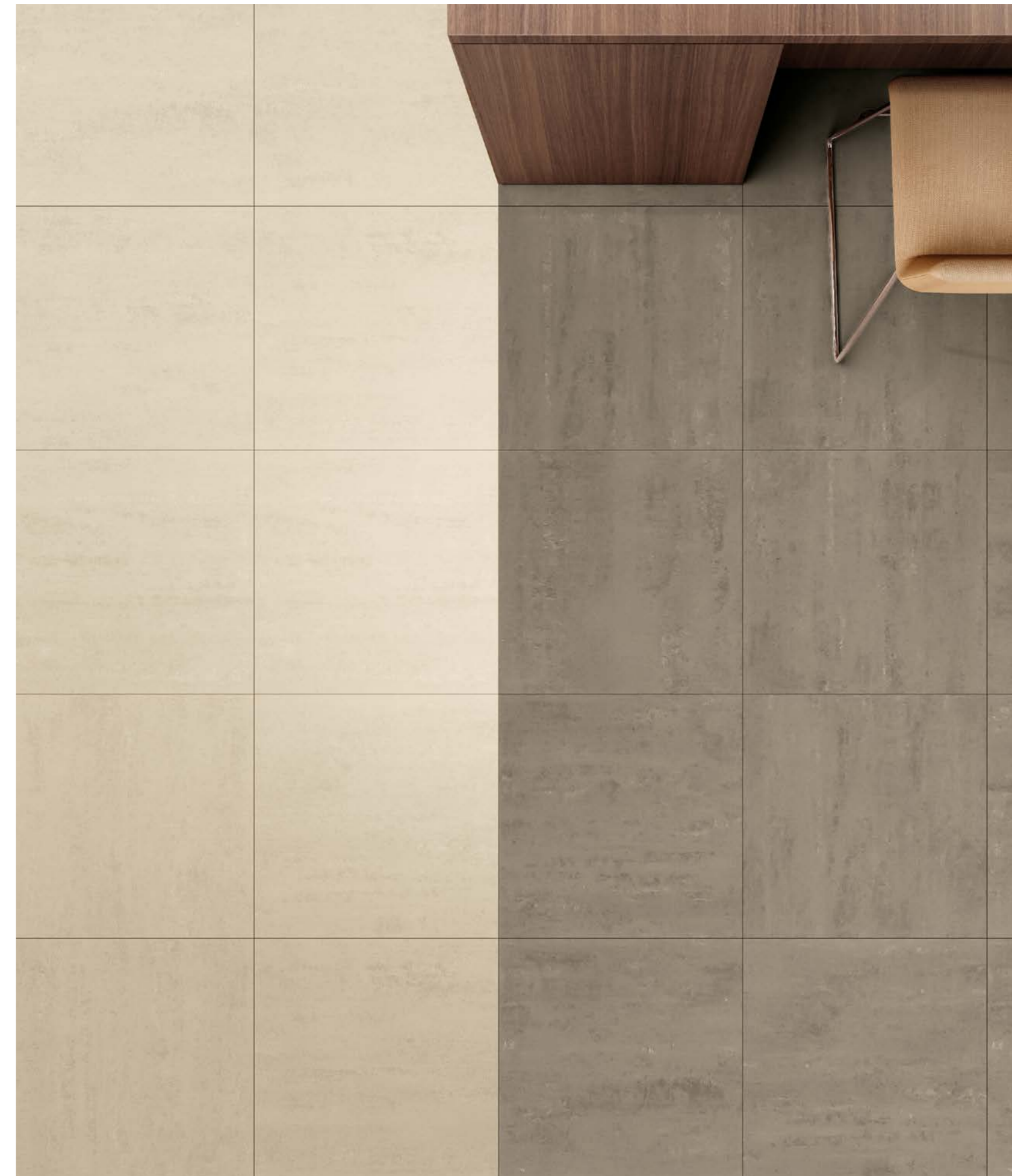
Ergänzt wird das optische Ergebnis durch die nachgewiesenen und zuverlässigen technischen Leistungen eines Feinsteinzeugs der neuesten Generation.

La performance esthétique s'accompagne et fiable d'un grès cérame de dernière génération.

Il risultato estetico è abbinato alle prestazioni tecniche provate ed affidabili di un gres porcellanato di ultima generazione.

60x60 - 24"x24" Naturale Rettificato

60x60 - 24"x24" Naturale Rettificato



Ageless  
Airport Lounge



## Africa / Baltic

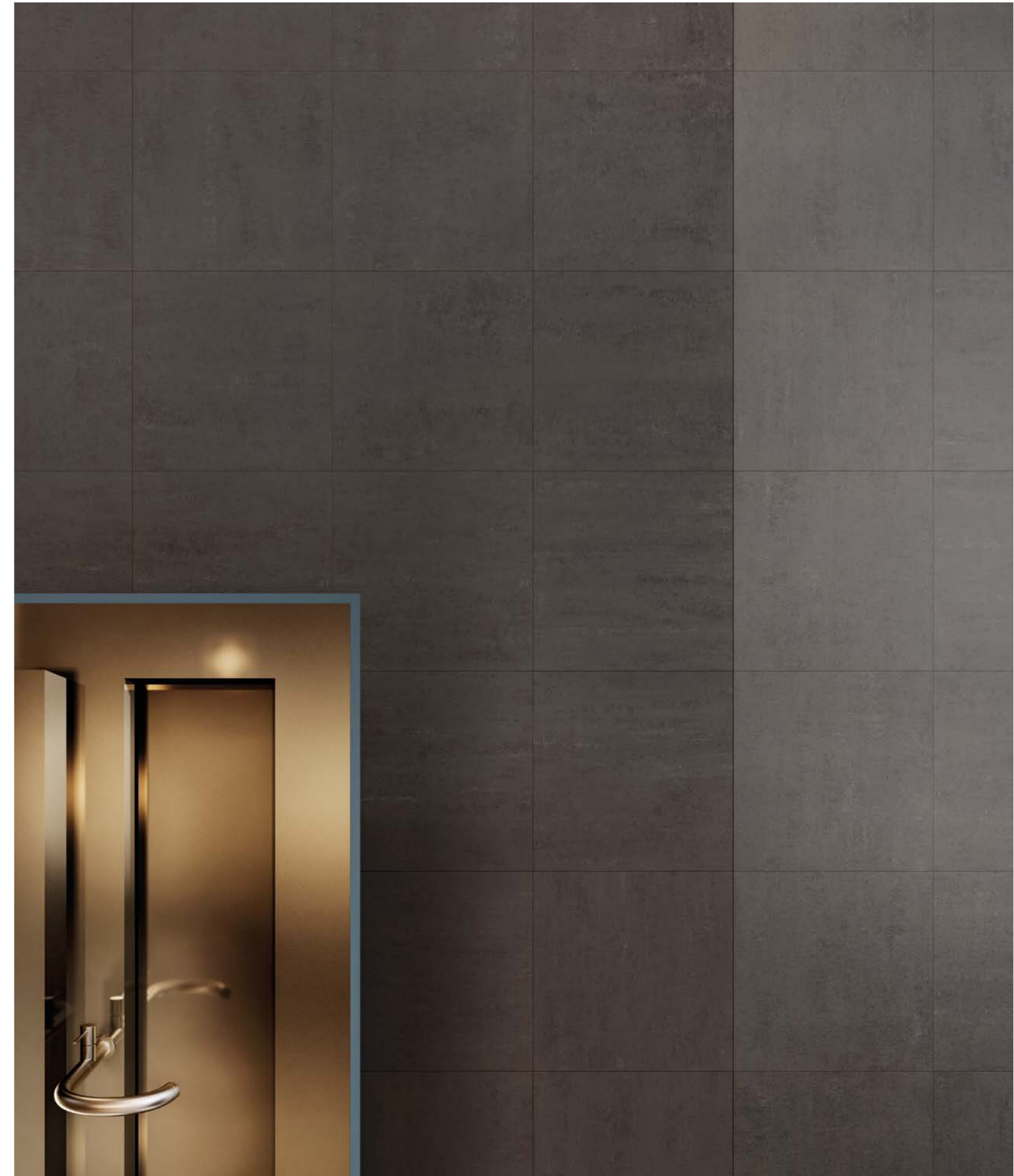
A collection with a very sober effect combined with a high resistance to daily stress, both in residential and commercial environments, and in large public areas.

Eine Kollektion von hohem stilistischem Niveau, ausgesprochen schlicht und dazu hochbeständig gegenüber den alltäglichen Belastungen in Wohn- und Gewerbebereichen ebenso wie in weitflächigen öffentlichen Bereichen.

Une collection avec un effet de style très sobre et flanquée d'une très grande résistance aux contraintes quotidiennes, dans les bâtiments résidentiels et commerciaux comme dans les grands espaces publics.

Una collezione dall'effetto stilistico molto sobrio unito ad un'elevata resistenza alle sollecitazioni quotidiane, sia in ambienti residenziali e commerciali, che in grandi aree pubbliche.

60x60 - 24"x24" Naturale Rettificato



Ageless  
Bathroom

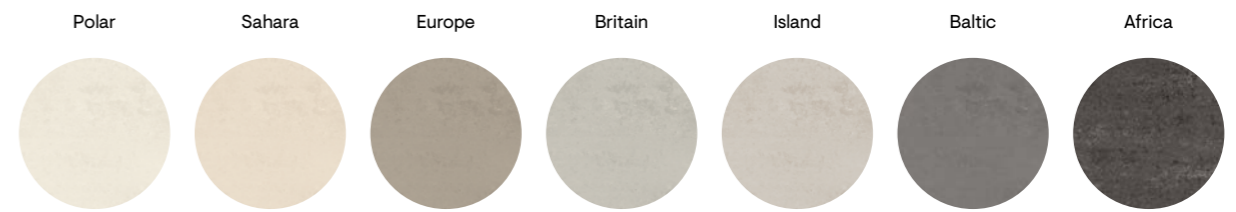




# Informazioni Tecniche

7

Colori  
Colours  
Farben  
Couleurs



2

Formati  
Sizes  
Formate  
Formats



1

Spessore  
Thickness  
Stärke  
Epaisseur

±9,5

1

Superfici  
Surfaces  
Oberflächen  
Surfaces

Naturale

1

Strutture 3D  
3D structures  
Strukturen  
Décorations en relief



i

Effetto Contemporaneo  
Contemporary effect  
Moderne Wirkung  
Effet Contemporain

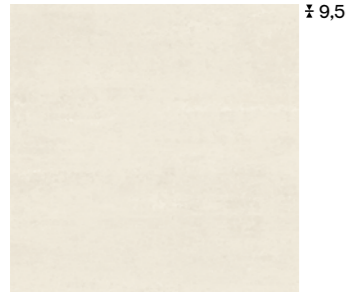
Rivestimento  
Wall Tiles  
Wandfliesen  
Revêtement

Pavimento  
Floor Tiles  
Bodenfliesen  
Sol

Gres fine porcellanato ad impasto colorato  
Coloured-body fine porcelain stoneware  
Feinsteinzeug aus farbiger Masse  
Grès cérame fin à pâte colorée

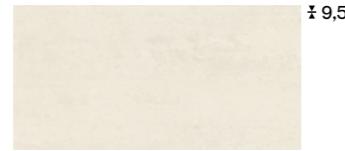
Tecnologia digitale  
Digital technology  
Digital technologie  
Technologie numérique

# Polar



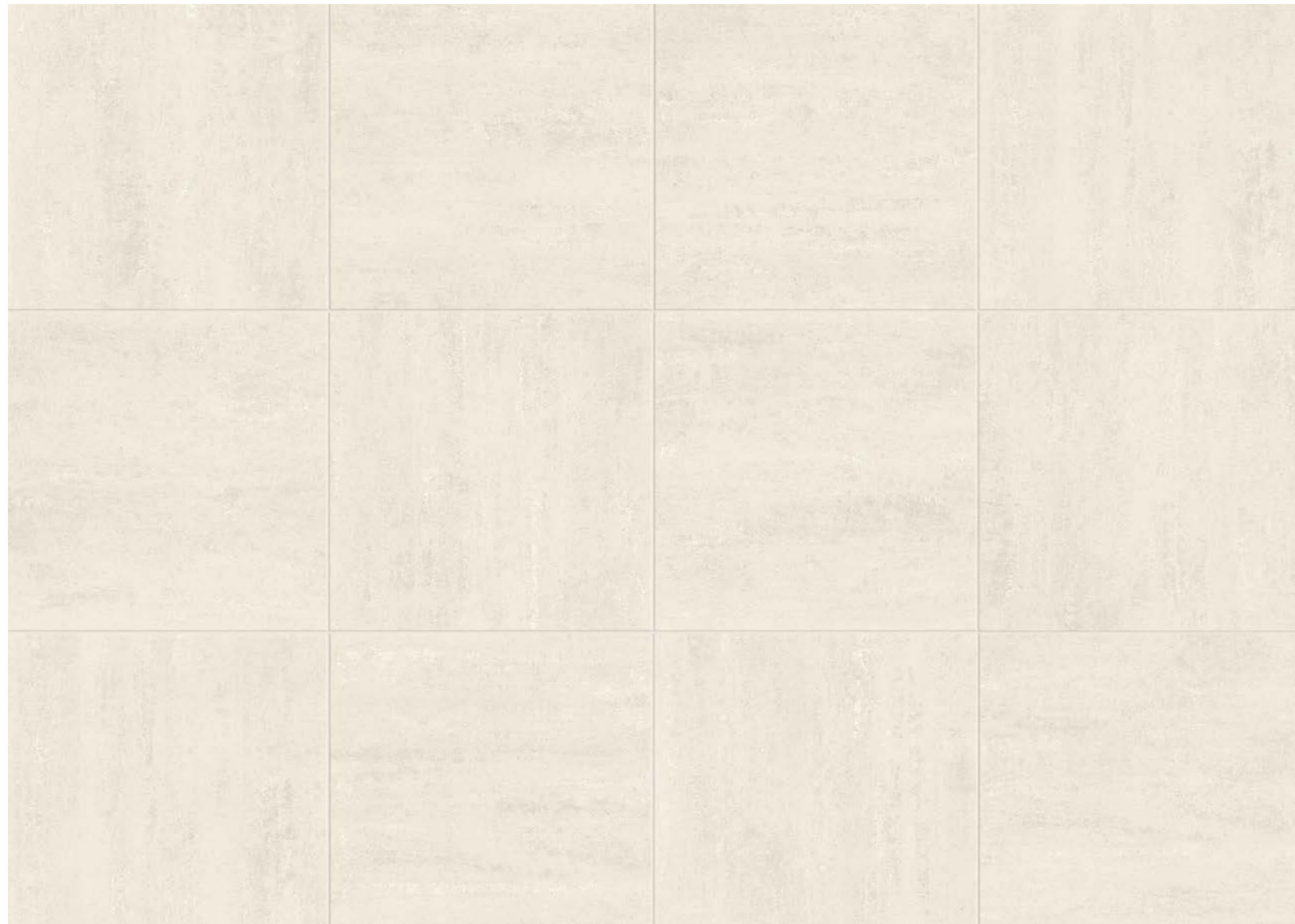
± 9,5

60x60 - 24"x24"  
**02778** | Ageless Polar Nat/Ret U4 P4 E3 C2



± 9,5

30x60 - 12"x24"  
**02768** | Ageless Polar Nat/Ret U4 P3 E3 C2



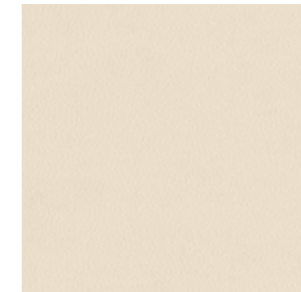
Polar Nat/Ret 60x60 - 24"x24"

# Sahara



± 9,5

60x60 - 24"x24"  
**02776** | Ageless Sahara Nat/Ret U4 P4 E3 C2



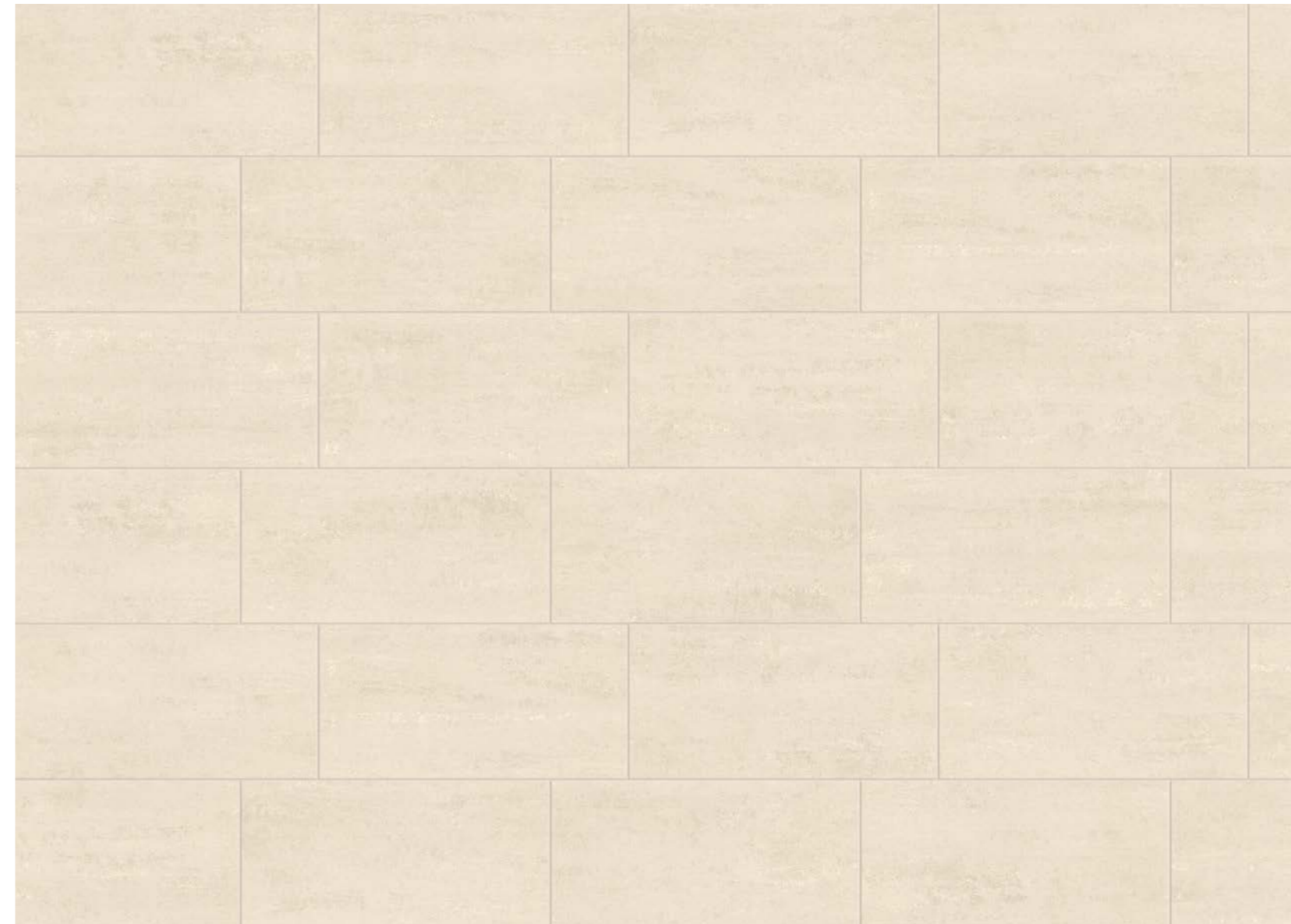
± 9,5

60x60 - 24"x24"  
**02786** | Ageless Sahara Textured Nat/Ret

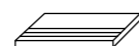
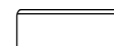


± 9,5

30x60 - 12"x24"  
**02766** | Ageless Sahara Nat/Ret U4 P3 E3 C2



Sahara Nat/Ret 30x60 - 12"x24"



# Europe



± 9,5

60x60 - 24"x24"

**02777** | Ageless Europe Nat/Ret U4 P4 E3 C2



± 9,5

30x60 - 12"x24"

**02767** | Ageless Europe Nat/Ret U4 P3 E3 C2



Europe Nat/Ret 30x60 - 12"x24"

# Britain



± 9,5

60x60 - 24"x24"

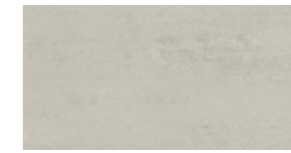
**02779** | Ageless Britain Nat/Ret U4 P4 E3 C2



± 9,5

60x60 - 24"x24"

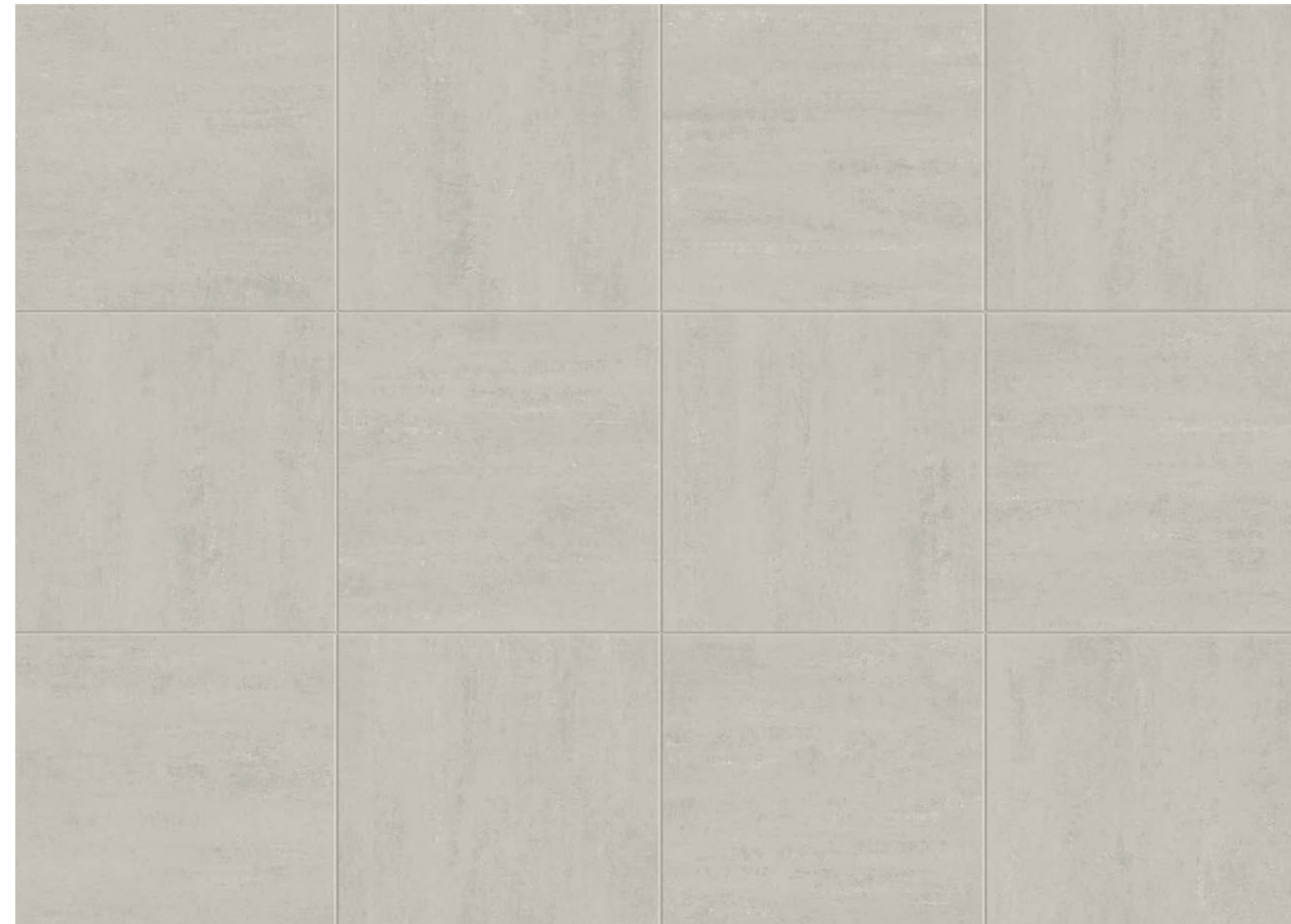
**02787** | Ageless Britain Textured Nat/Ret



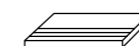
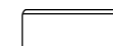
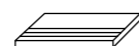
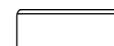
± 9,5

30x60 - 12"x24"

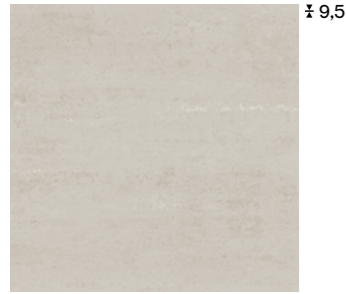
**02769** | Ageless Britain Nat/Ret U4 P3 E3 C2



Britain Nat/Ret 60x60 - 24"x24"



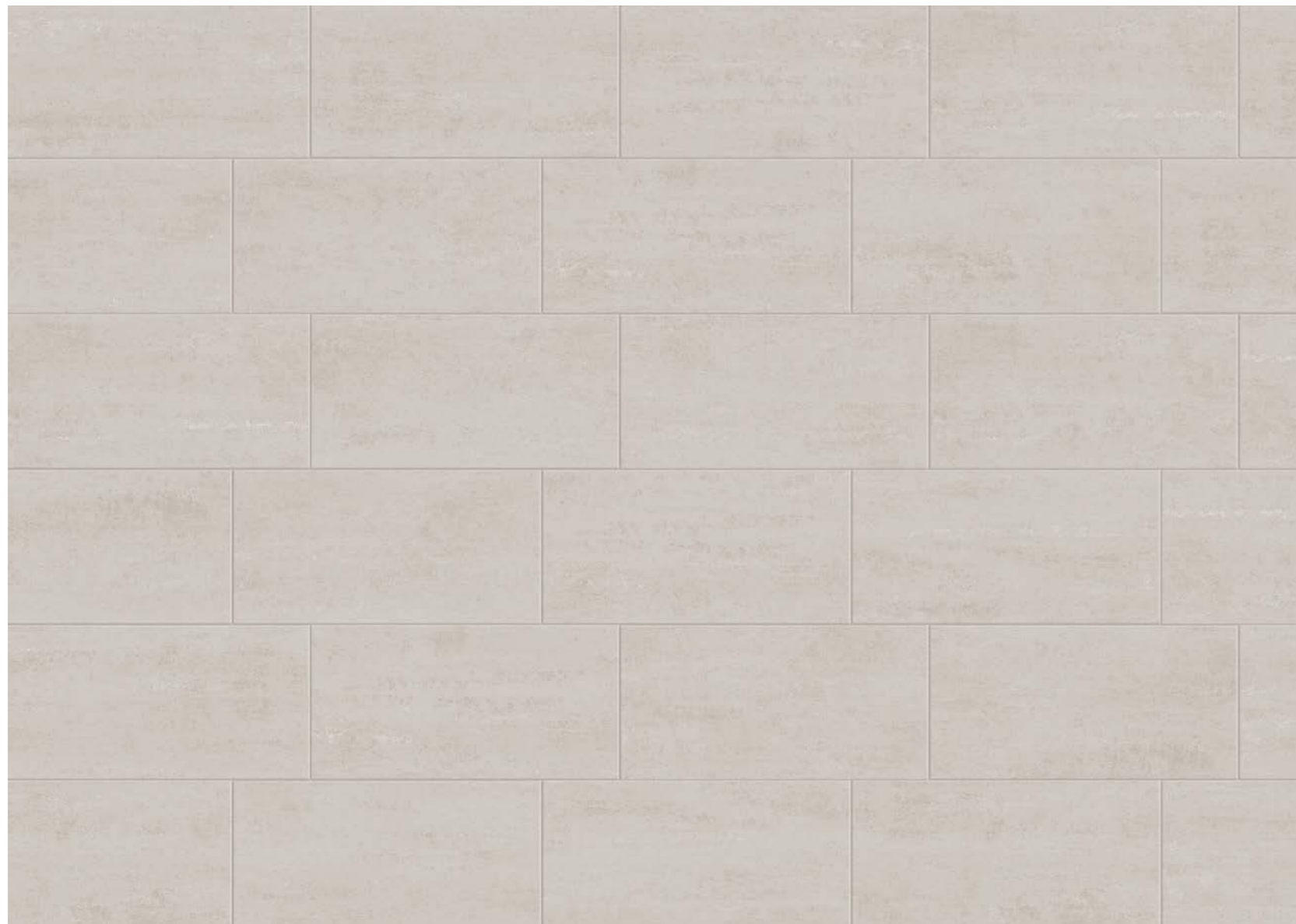
# Island



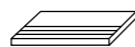
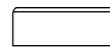
60x60 - 24"x24"  
**02534** | Ageless Island Nat/Ret U4 P4 E3 C2



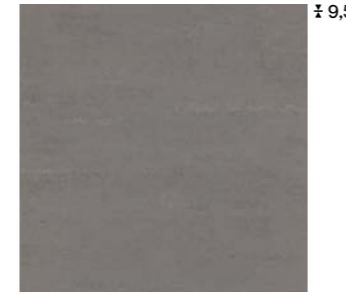
30x60 - 12"x24"  
**00015** | Ageless Island Nat/Ret U4 P3 E3 C2



Island Nat/Ret 30x60 - 12"x24"



# Baltic



60x60 - 24"x24"  
**02780** | Ageless Baltic Nat/Ret U4 P4 E3 C2



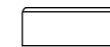
60x60 - 24"x24"  
**02788** | Ageless Baltic Textured Nat/Ret



30x60 - 12"x24"  
**02770** | Ageless Baltic Nat/Ret U4 P3 E3 C2



Baltic Nat/Ret 60x60 - 24"x24"



# Riepilogo Gamma

Collection  
Serie  
Gamme

# Africa



± 9,5

60x60 - 24x24"

02536 | Ageless Africa Nat/Ret U4 P4 E3 C2



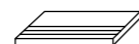
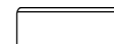
± 9,5

30x60 - 12x24"

00961 | Ageless Africa Nat/Ret U4 P3 E3 C2



Africa Nat/Ret 30x60 - 12x24"









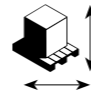
| Formati<br>Sizes |         | 60x60 - 24x24" | 30x60 - 12x24" | UPEC      |       |       |
|------------------|---------|----------------|----------------|-----------|-------|-------|
|                  |         |                |                | Din 51130 | Dcof  |       |
|                  |         |                |                | ± 9,5     | ± 9,5 |       |
|                  | Nat/Ret | 02778          | 02768          | V2        | R9    | >0.42 |
| Polar            |         |                |                |           |       |       |
|                  | Nat/Ret | 02776          | 02766          | V2        | R9    | >0.42 |
| Sahara           |         |                |                |           |       |       |
|                  | Nat/Ret | 02777          | 02767          | V2        | R9    | >0.42 |
| Europe           |         |                |                |           |       |       |
|                  | Nat/Ret | 02779          | 02769          | V2        | R9    | >0.42 |
| Britain          |         |                |                |           |       |       |
|                  | Nat/Ret | 02534          | 00015          | V2        | R9    | >0.42 |
| Island           |         |                |                |           |       |       |
|                  | Nat/Ret | 02780          | 02770          | V2        | R9    | >0.42 |
| Baltic           |         |                |                |           |       |       |
|                  | Nat/Ret | 02536          | 00961          | V2        | R9    | >0.42 |
| Africa           |         |                |                |           |       |       |

| Strutture 3D<br>3D Structures |              |              |      |
|-------------------------------|--------------|--------------|------|
| Textured<br>60x60 - 24x24"    | Din<br>51130 | Din<br>51097 | Dcof |
| ± 9,5                         |              |              |      |
|                               |              |              |      |
| 02786                         | R11          | A+B+C        |      |
| 02787                         | R11          | A+B+C        |      |
| 02788                         | R11          | A+B+C        |      |

| Formati<br>Sizes |         | Pezzi Speciali<br>Special Pieces |                                |
|------------------|---------|----------------------------------|--------------------------------|
|                  |         | Step<br>30x60 - 12x24"           | Battiscopa<br>8x60 - 3 1/4x24" |
|                  |         | ± 9,5                            | ± 9,5                          |
|                  | Nat/Ret | 02803                            | 02797                          |
| Polar            |         |                                  |                                |
|                  | Nat/Ret | 02801                            | 02795                          |
| Sahara           |         |                                  |                                |
|                  | Nat/Ret | 02802                            | 02796                          |
| Europe           |         |                                  |                                |
|                  | Nat/Ret | 02804                            | 02798                          |
| Britain          |         |                                  |                                |
|                  | Nat/Ret | 00031                            | 00023                          |
| Island           |         |                                  |                                |
|                  | Nat/Ret | 02805                            | 02799                          |
| Baltic           |         |                                  |                                |
|                  | Nat/Ret | 02839                            | 02837                          |
| Africa           |         |                                  |                                |

# Imballi

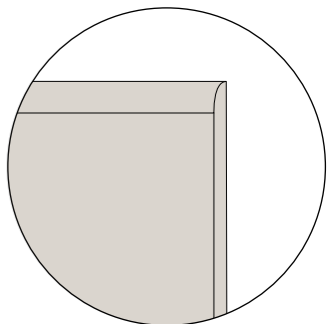
Packing  
Verpackung  
Emballage

| Formati<br>Sizes                     |   | ± MM |  Pezzi Scatola<br>Pieces/Box<br>Stck/Karton<br>Carreaux/Boîte |  Mq/Scatola<br>Sqmt/Box<br>Qm/Karton<br>M2/Boîte |  Kg/Scatola<br>Kgs/Box<br>Kg/Karton<br>Kg/Boîte |  Scatole/Paletta<br>Boxes/Pallet<br>Karton/Palette<br>Boîte/Palette |  Mq/Paletta<br>Sqmt/Pallet<br>Qm/Pallet<br>M2/Palette |  Kg/Paletta<br>Kgs/Pallet<br>Kg/Pallet<br>Kg/Palette |  Formato Paletta<br>Size Pallet<br>Format Pallet<br>Dim. Palette |
|--------------------------------------|---|------|--|---|--|--|--|---|---|
| 60×60 (24"×24")<br>Nat/Ret           | P | 9,5  | 3  | 1,080   | 21,50  | 40   | 43,20  | 860   | 120x80x75   |
| 30×60 (12"×24")<br>Nat/Ret           | P | 9,5  | 6  | 1,080   | 21,50  | 48   | 51,84  | 1032  | 120x80x75   |
| 60×60 (24"×24")<br>Textured Nat/Ret  | P | 9,5  | 3  | 1,080   | 21,50  | 40   | 43,20  | 860   | 120x80x75   |
| Pezzi Speciali / Special Pieces      |   |      |  |   |  |  |  |   |   |
| 30×60 (12"×24")<br>Step Nat/Ret      | P | 9,5  | 6  | 1,080   | 21,50  | 36   | -  | -   | -   |
| 8×60 (3¼"×24")<br>Battiscopa Nat/Ret | P | 9,5  | 10   | 0,480<br>m.l. 6,00  | 11,00  | 72   | -  | -   | -   |

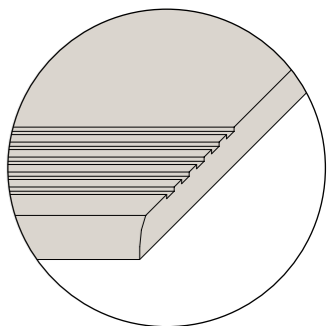
# Pezzi Speciali

Special pieces  
Formstücke  
Pièces spéciales

Battiscopa Nat/Ret 8×60 – 3¼"×24" ± 9,5



Step Nat/Ret 30×60 – 12"×24" ± 9,5  
(Becco civetta e fresature tecniche - bullnose edge with grooves)







Reading Guide  
Leseanleitung  
Guide a la lecture



Spessore  
Thickness  
Stärke  
Épaisseur

Variazione nelle sfumature di colore  
Color shade variations  
Variation der Farbnuancen  
Variation des nuances de couleur

Resistenza alla scivolosità  
Skid resistance  
Rutschfestigkeit  
Resistance au glissement

P Gres fine porcellanato  
Fine Porcelain Stoneware  
Feinsteinzeug  
Grès Cérame Fin

V1

Aspetto uniforme  
Uniform appearance  
Gleichförmiges aussehen  
Aspect uniforme

| DIN 51130 | DIN 51097 | DCOF  |
|-----------|-----------|-------|
| R10       | A+B       | >0,42 |

V2

Variazione leggera  
Slight variation  
Leichte variation  
Variation légère

V3

Variazione moderata  
Moderate variation  
Mäßige variation  
Variation modeste

V4

Variazione casuale  
Random variation  
Zufällige variation  
Variation fortuite

Project Management  
Mktg Piemme

Gennaio 2021  
January 2021

Tutti i formati sono nominali.

All sizes are nominal.

Die Formate sind Nennwerte.

Tous les formats sont nominaux.

Gli spessori riportati in questo catalogo sono nominali e possono variare a seconda dei formati e delle finiture.

The thickness mentioned on this catalogue are nominal and can be different according to the sizes and the finishes.

Die in diesem Katalog angegebenen Fliesenstärke sind nominal und können, je nach Format oder Oberfläche, verschieden sein.

Les épaisseurs reportées sur ce catalogue sont nominales et peuvent varier suivant les formats et les finitions.

I colori e le caratteristiche estetiche dei prodotti sono quanto più possibile vicini a quelli reali, nei limiti consentiti dai processi di stampa.

The colours and appearance features of the products are as close as possible to reality, within the limitation of the printing process.

Die Farben und die ästhetischen Eigenschaften der Produkte entsprechen der Wirklichkeit, innerhalb den von dem Druckverfahren erlaubten Grenzen.

Les couleurs et les caractéristiques esthétiques sont fidèles aux couleurs et caractéristiques réelles dans les limites des procédés d'impression.



#### Una storia tutta italiana

Piemme dal 1962, anno della sua fondazione, è protagonista indiscussa del vero Made in Italy, quello fatto di eccellenza, passione e creatività. Oggi tutti i materiali Piemme sono prodotti con tecnologia d'avanguardia come la decorazione digitale inkjet HD, la cottura in forni ad energia pulita a recupero di calore, la rettifica e levigatura in linea "one roof" e la verifica elettronica dello standard qualitativo.

#### An all-Italian story

Since 1962, the year of its foundation, Piemme has been the undisputed protagonist of real Made in Italy, that which consists of excellence, passion and creativity. Today all Piemme materials are made using cutting-edge technology such as HD inkjet digital decoration, firing in heat-recycling clean-energy kilns, "one roof" grinding and polishing line and electronic quality standard control.

#### Eine ganz italienische Geschichte

Seit dem Gründungsjahr 1962 ist Piemme ein unangefochtener Hauptakteur des echten Made in Italy: jenem, das auf Exzellenz, Leidenschaft und Kreativität gründet. Alle Piemme Erzeugnisse werden heute unter Einsatz von Spitzentechnologie produziert, wie zum Beispiel mit der digitalen Inkjet-Dekoration, dem Brennen in Öfen mit grüner Energie und Wärmerückgewinnung, dem Schleifen und Polieren in der Linie „unter einem Dach“ sowie der elektronischen Prüfung des Qualitätsniveaus.

#### Une histoire toute italienne

Depuis 1962, l'année de sa fondation, Piemme est la protagoniste indiscutée du Made in Italy, basé sur l'excellence, la passion et la créativité. Aujourd'hui toutes les phases du cycle de fabrication Piemme sont issues d'une technologie à l'avant-garde comme la décoration numérique inkjet HD, la cuisson dans des fours à énergie propre et à récupération de chaleur, la rectification et le polissage en ligne "one roof" et la vérification électronique de la qualité.

# CERAMICHE PIEMME

FLOOR AND MORE

INDUSTRIE CERAMICHE PIEMME S.P.A.  
VIA DEL CROCIALE 42/44, 41042 FIORANO (MO) - ITALY  
T. +39 0536.849111 - F. +39 0536.849402  
WWW.CERAMICHEPIEMME.IT - INFO@CERAMICHEPIEMME.IT