

TERRA MIA

ORNAMENTA.COM

6 COLORS
12 PATTERNS
20X20 //
GRES PORCELAIN //
NATURAL //

ORNAMENTA®

MEDITERRANEAN-INSPIRED

*ceramics of the past
in a contemporary key*

SUMMARY

COLOURS

pag. 4 | 5

THE COLLECTION

pag. 6 | 15

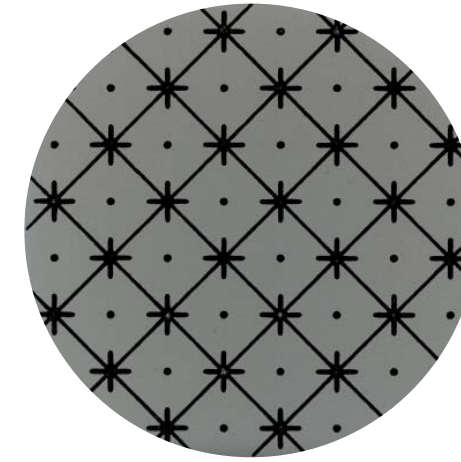
TECHNICAL INFO

pag. 17 | 21

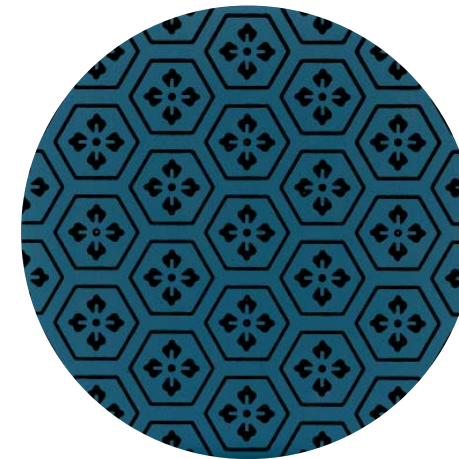
CREDITS

pag. 22

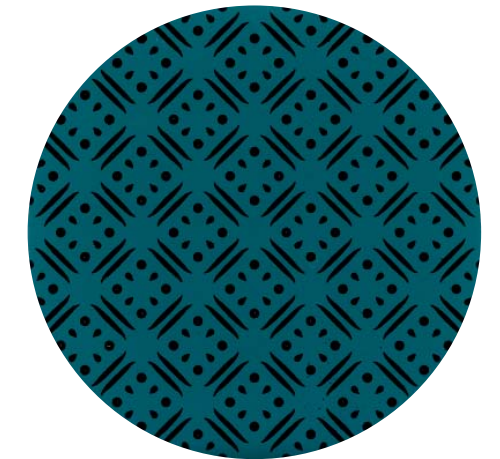
ORNAMENTA.COM



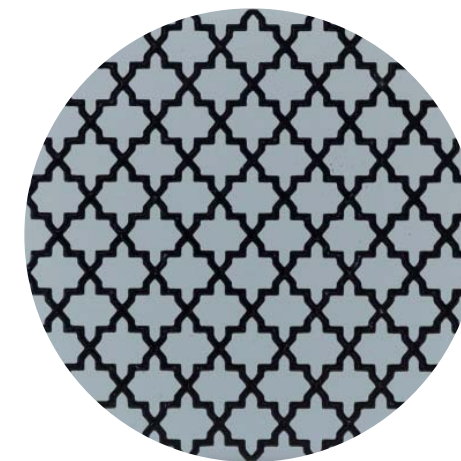
tortora



cobalto

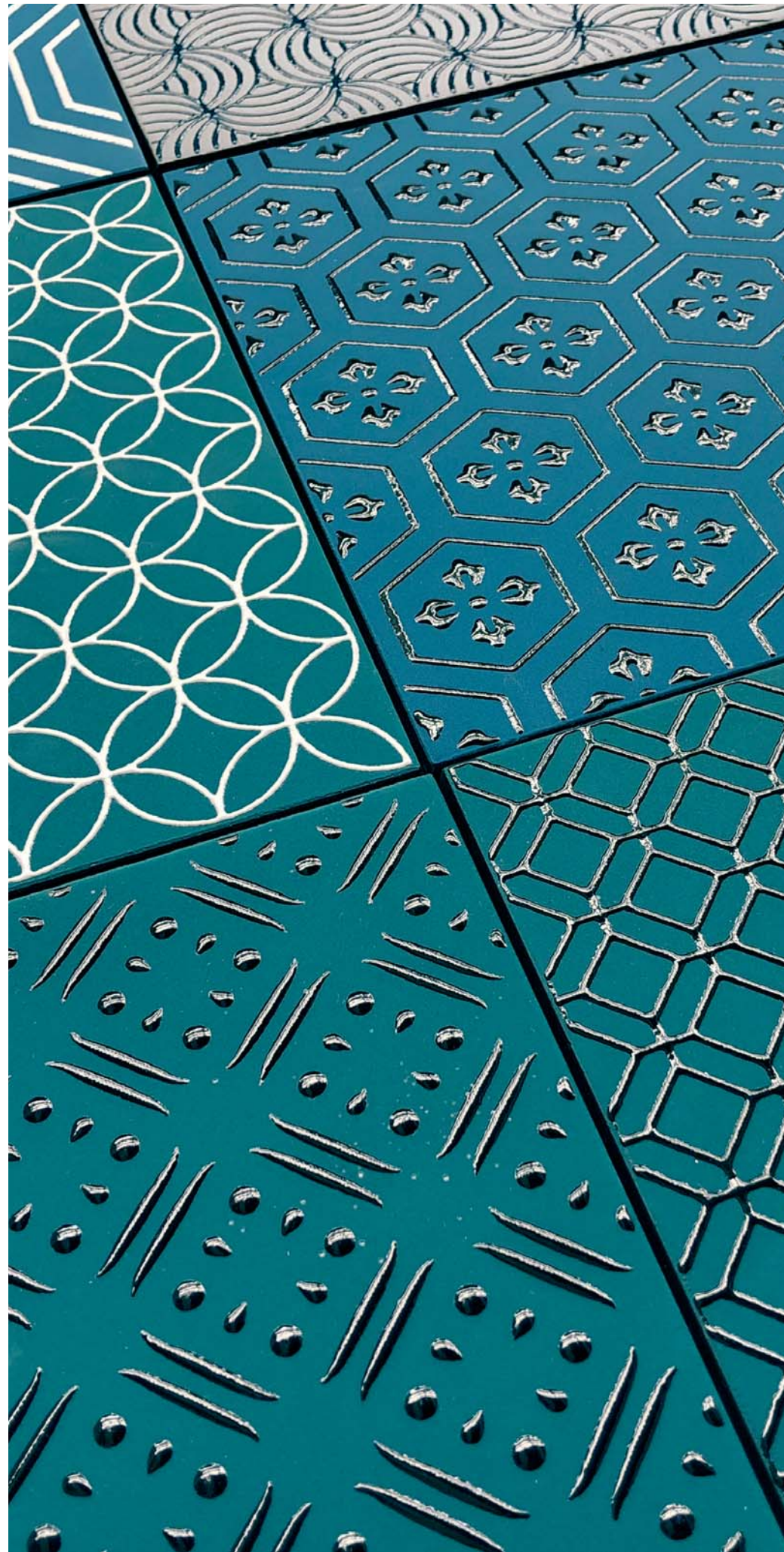


acquamarina



grigio

*I colori e le caratteristiche estetiche dei materiali illustrati nel presente catalogo sono da ritenersi puramente indicativi.
Colours and aesthetical features of the materials as illustrated in this catalogue are to be regarded as mere indications.

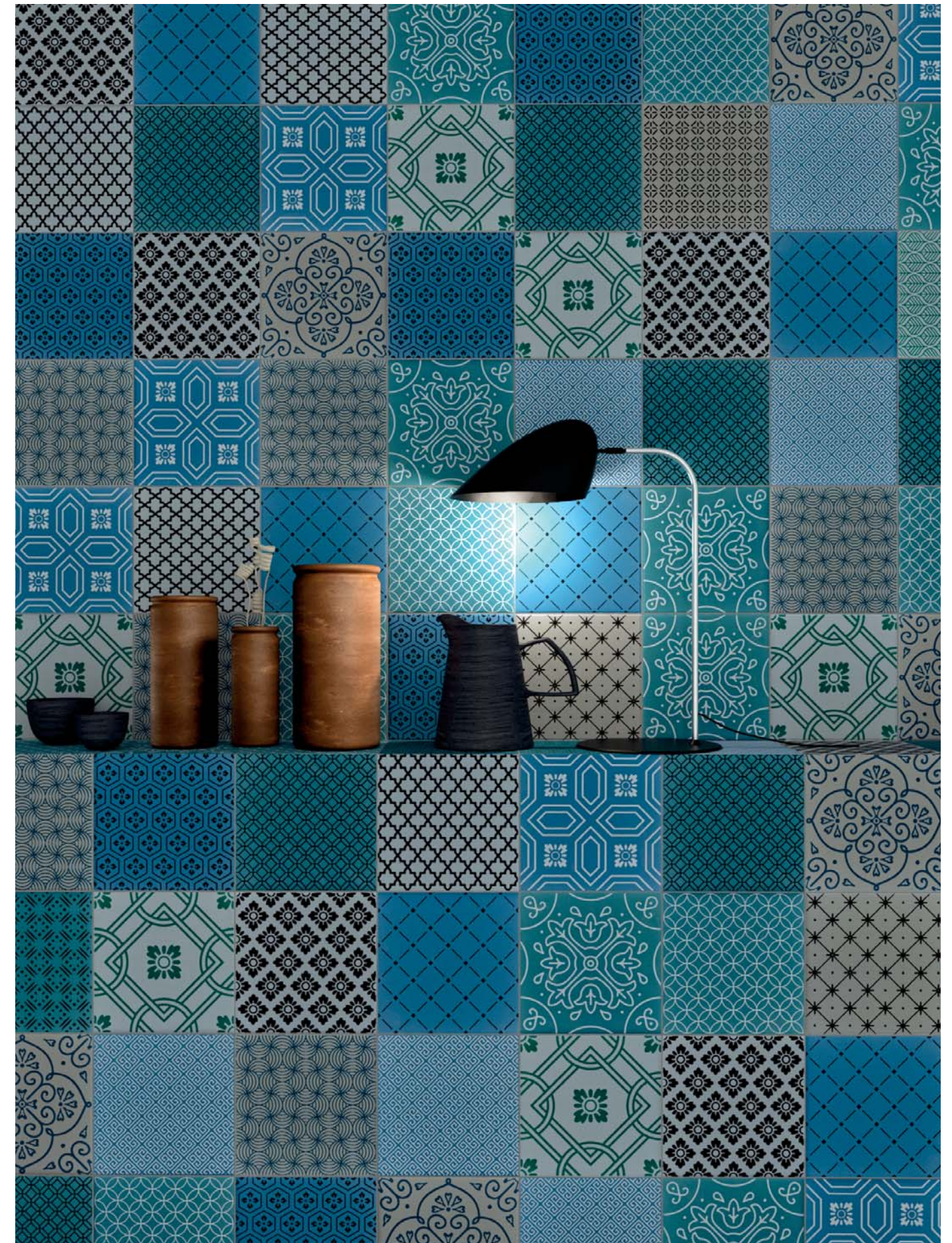


Basata sul modulo quadrato 20x20, Terra Mia è una collezione ceramica di ispirazione mediterranea che nasce dalla volontà di trattare un materiale ricco di storia come la ceramica dipinta a mano di una volta in chiave contemporanea attraverso l'ausilio delle moderne tecnologie senza alterarne lo spirito originale. Disponibile in 16 soggetti grafici.

Based on the 20x20 square module, Terra Mia is a mediterranean-inspired ceramic collection that comes from the desire to treat a material rich in history such as the hand-painted ceramics of the past in a contemporary key through the use of modern technologies without altering the original spirit. Available in 16 graphics.

Patchwork

20x20 | 8"x8"



Lattice - Decò

20x20 | 8"x8"

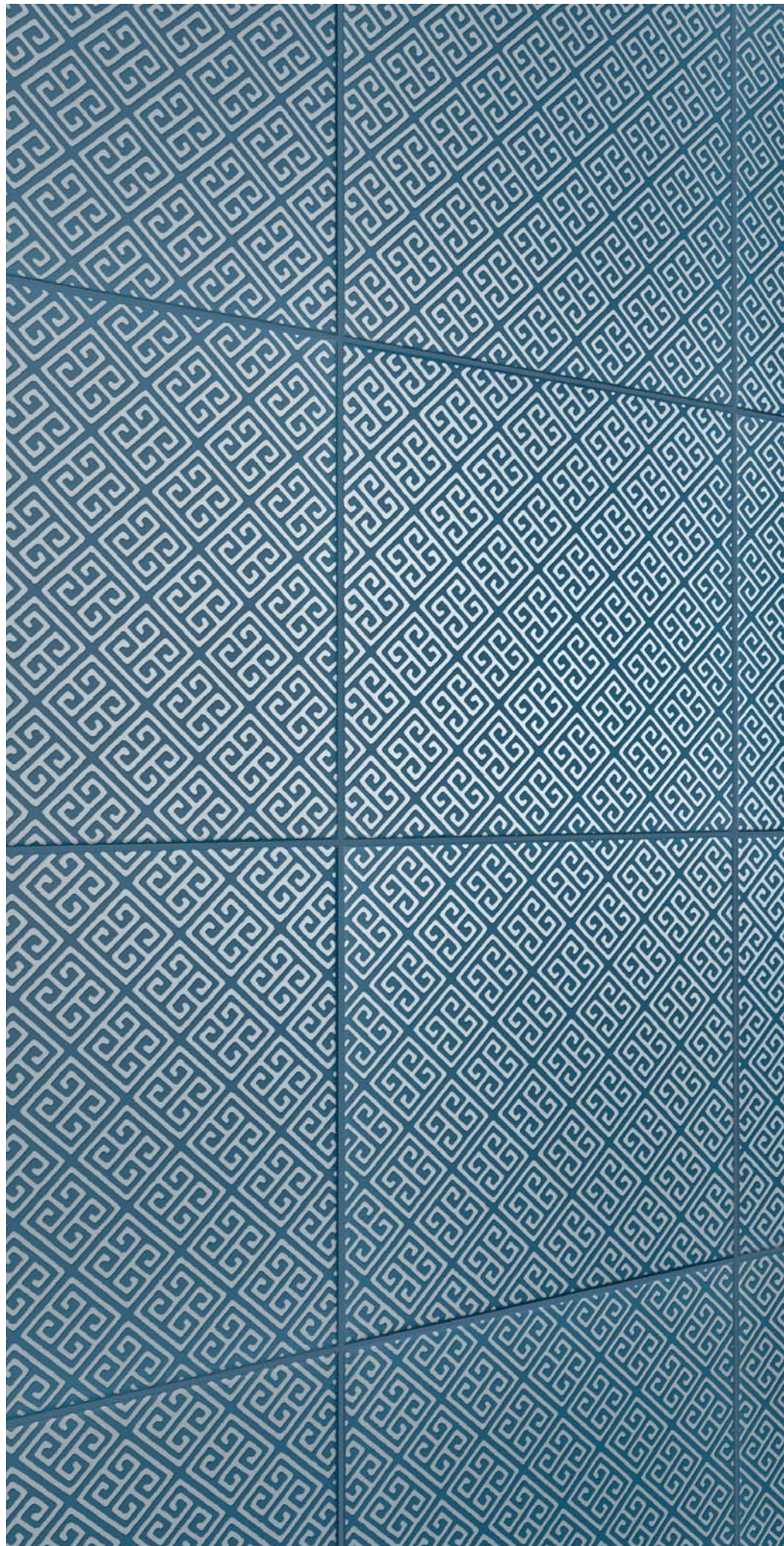


TM2020LT LATTICE 20x20 | 8"x8"
TM2020DE DECÒ 20x20 | 8"x8"



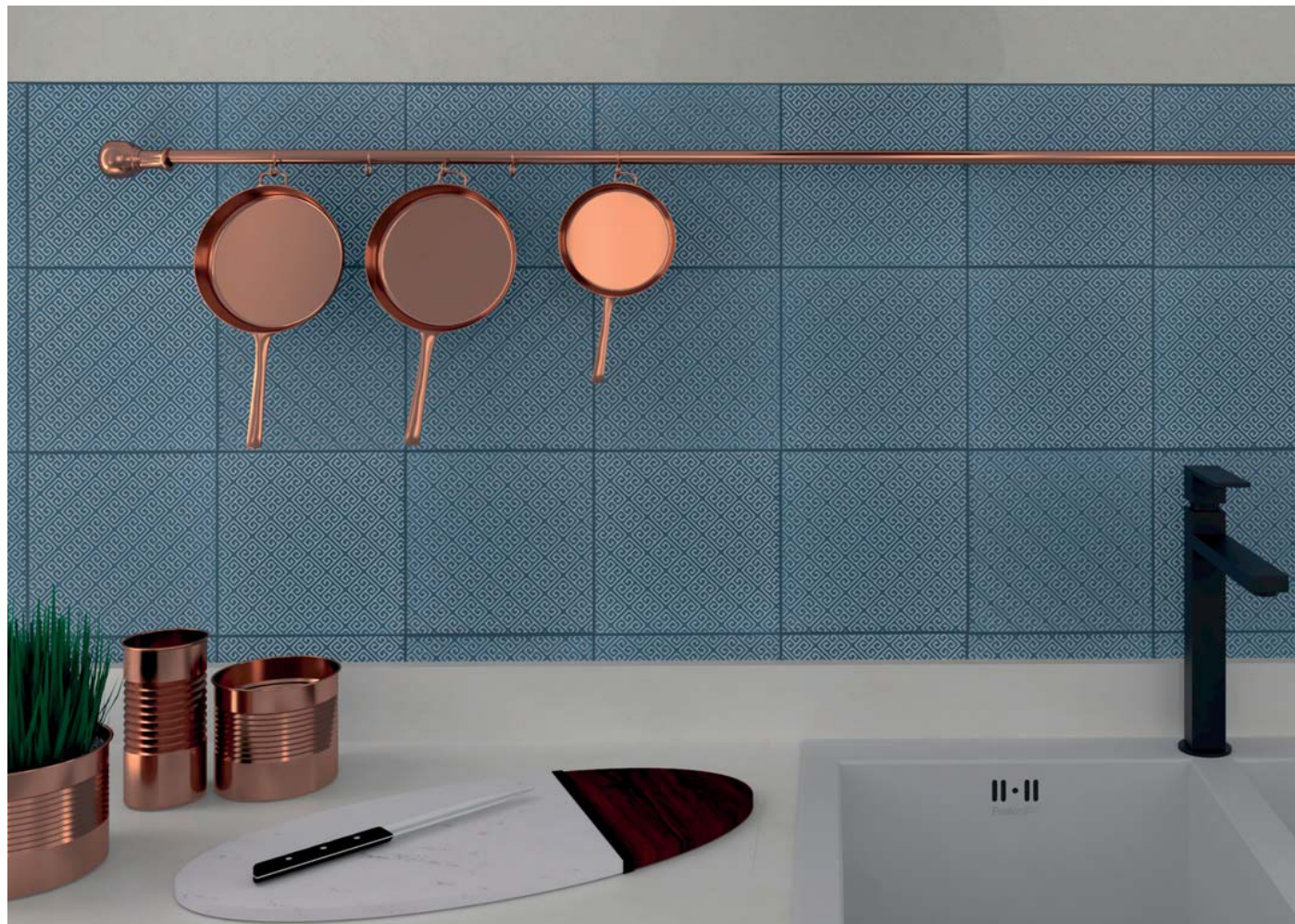
Patchwork

20x20 | 8"x8"





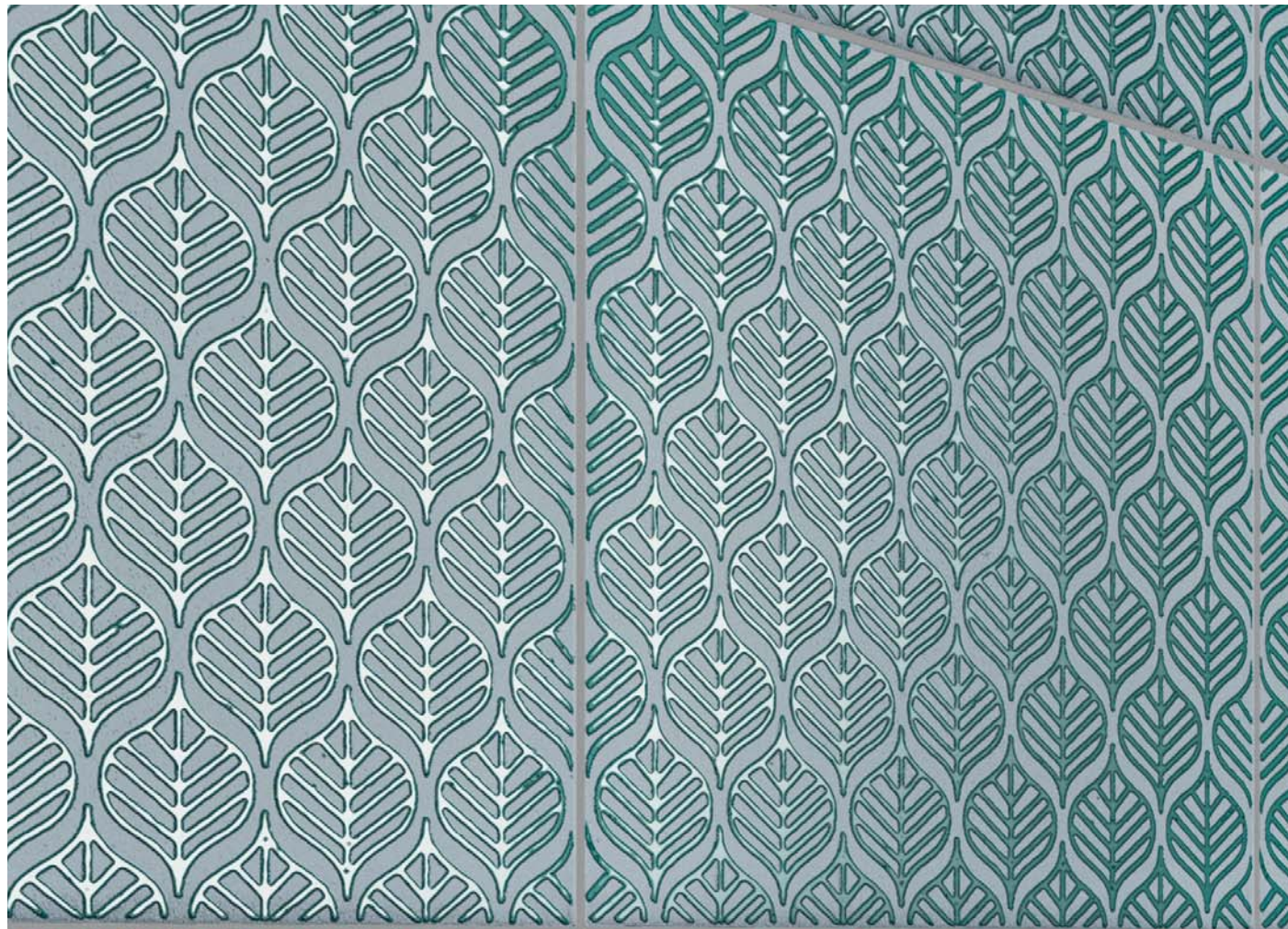
TM2020PI PIZZO 20x20 | 8"x8"



TM2020GC GRECA 20x20 | 8"x8"



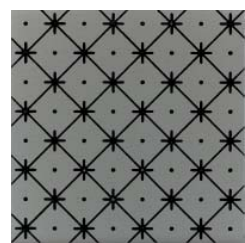
TM2020PI PIZZO 20x20 | 8"x8"



TM2020FO FOGIE 20x20 | 8"x8"



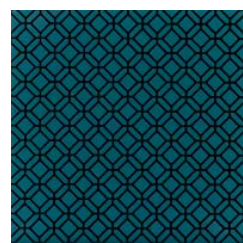
TECHNICAL INFO



TM2020RG
RIGGIOLA
20x20 | 8"x8"



TM2020F0
FOGLIE
20x20 | 8"x8"



TM2020GR
GRASSETTO
20x20 | 8"x8"



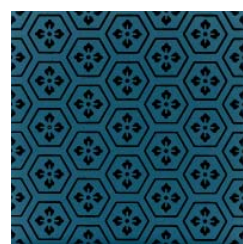
TM2020LA
LANTERNA
20x20 | 8"x8"



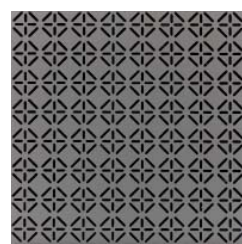
TM2020DE
DECÒ
20x20 | 8"x8"



TM2020QU
QUADRETTI
20x20 | 8"x8"



TM2020ES
ESAGONA
20x20 | 8"x8"



TM2020LI
LINEE
20x20 | 8"x8"



TM2020PI
PIZZO
20x20 | 8"x8"



TM2020LT
LATTICE
20x20 | 8"x8"



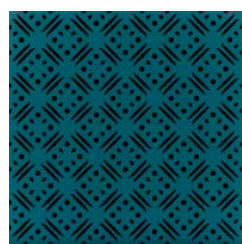
TM2020ST
STENCIL
20x20 | 8"x8"



TM2020FI
FIORE
20x20 | 8"x8"



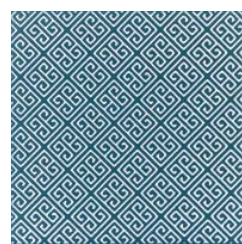
TM2020LO
LOSANGA
20x20 | 8"x8"



TM2020FA
FAENZA
20x20 | 8"x8"

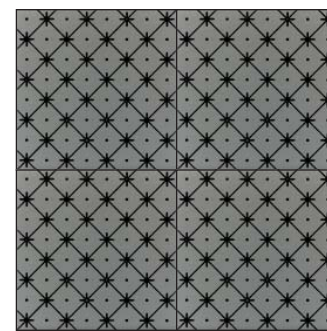


TM2020CI
CIRCLE
20x20 | 8"x8"

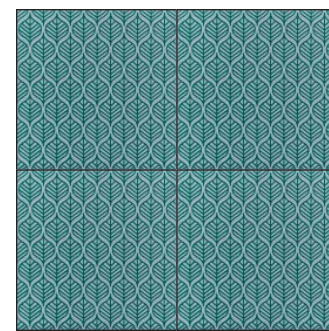


TM2020GC
GRECA
20x20 | 8"x8"

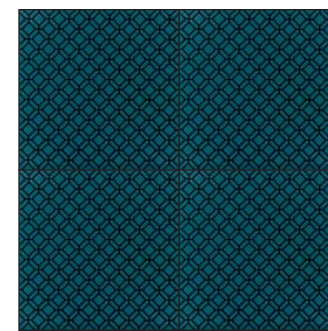
INSTALLATION PATTERNS



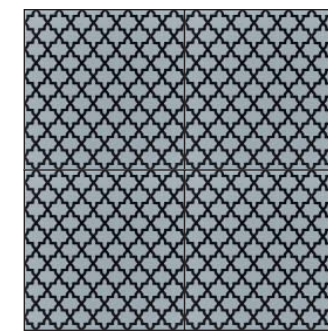
RIGGIOLA



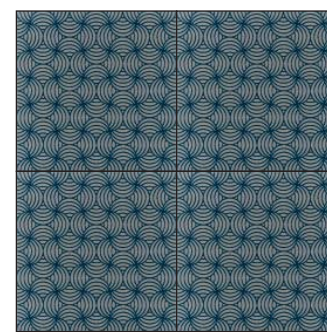
FOGLIE



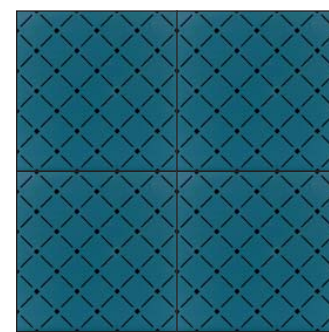
GRASSETTO



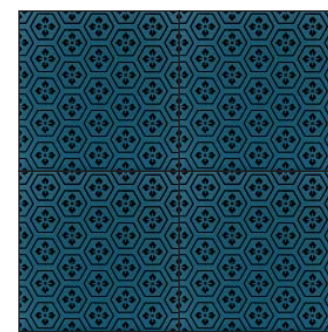
LANTERNA



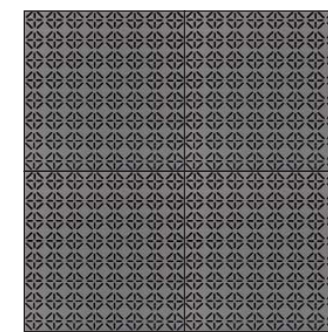
DECÒ



QUADRETTI



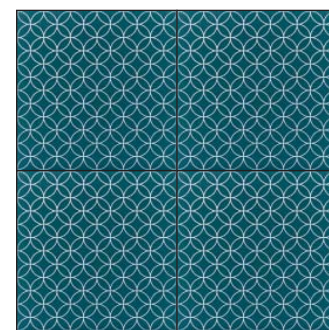
ESAGONA



LINEE



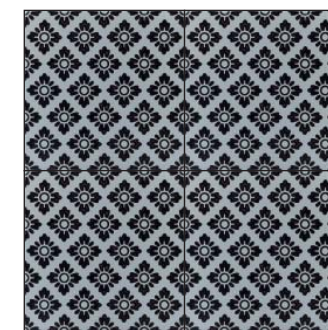
PIZZO



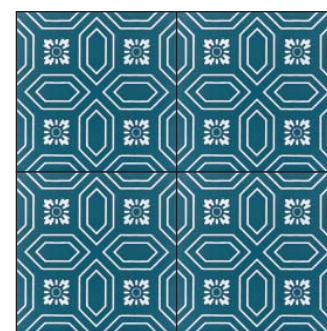
LATTICE



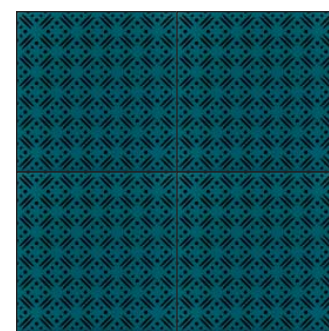
STENCIL



FIORE



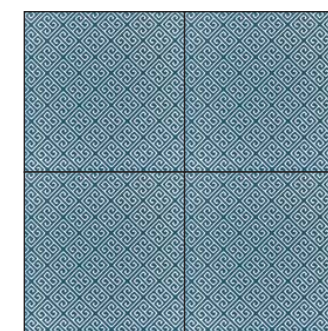
LOSANGA



FAENZA

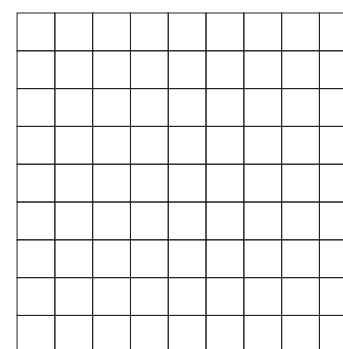


CIRCLE



GRECA

SCHEMI DI POSA / LAYOUT SETTINGS



Si consiglia di posare il prodotto utilizzando un distanziale da 2mm.
We suggest to lay the product by using a spacer of 2mm.

MISURE E PESI

weight and dimensions

poids et dimensions

größe und gewichte

medidas y pesos

Dimensione				
Size	20x20			
Format	8”x8”			
Format				
Tamaño				
Spessore				
Thickness	8 mm			
Épaisseur				
Stärke				
Espesor				
Peso				
Weight	0,86 kg			
Poids				
Gewicht				
Peso				
Pezzi per scatola				
Pieces per carton	6			
Pièces par carton				
Stück pro Karton				
Unidades por caja				
Quantità per scatola				
Quantity per carton	0,24 sqm			
Quantité par carton				
Quantität pro Karton				
Cantidad por caja				
Peso per scatola				
Weight per carton	5,16 kg			
Poids par carton				
Gewicht pro Karton				
Peso por caja				
Scatole per paletta				
Boxes per pallet	186			
Cartons par palette				
Karton pro palette				
Cajas por paleta				
Quantità per paletta				
Quantity per pallet	44,64 sqm			
Quantité par palette				
Quantität pro palette				
Cantidad por paleta				
Peso per paletta				
Weight per pallet	980,76 kg			
Poids par palette				
Gewicht pro palette				
Peso por paleta				

Giunto		Stucchi	720 Grigio Perla - Pearl Grey	Grado di variazione cromatica	
Joint		Grouts	282 Grigio Bardiglio - Bardiglio Grey	Colour shade variation	ASTM C137.1
Joint	2 mm	Joints	120 Nero - Black	Degré de variation chromatique	V0 - V4
Fugenbreite		Fugenmassen		Grad Der Farbabweichung	V01
Junta		Pasta de rejuntar		Grado De Variación Cromatica	

Avvertenze
Non saranno accolte contestazioni per danni visibili prima della posa. I colori dei materiali illustrati nel presente catalogo sono da ritenersi puramente indicativi. I dati presenti nella tabella “Misure e Pesi” sono aggiornati al momento della stampa del catalogo, pertanto i dati elencati possono subire variazioni.

Advice
Claims on items which have already been laid will not be accepted for any damage visible before laying. Colours of the materials as illustrated in this catalogue are to be regarded as mere indications. The details present in the table “Weight and Dimensions” are updated at the time the catalogue is printed, therefore the datas may change.

Avertissements
Ils ne seront pas acceptées les réclamations pour dommages visibles avant l’installation. Les couleurs des matériaux illustrés dans ce catalogue sont purement indicatives. Les données dans le tableau «poids et mesures» est correcte au moment de l’impression du catalogue, pourquoi les données peuvent être modifiées.

Warnungen
Sie werden nicht vor der Installation akzeptiert Ansprüche auf sichtbare Beschädigungen werden. Die Farben der Materialien, die in diesem Katalog dargestellt sind rein indikativ. Die Daten in der Tabelle “Maße und Gewichte” ist korrekt zum Zeitpunkt der Druck des Katalogs, deshalb werden die aufgelisteten Daten geändert werden können.

Advertencias
No se aceptarán reclamaciones por daños visibles antes de la instalación. Los colores de los materiales descritos en este catálogo son meramente indicativos. Los datos de los “Pesos y Medidas” tabla es correcta en el momento de imprimir el catálogo, por lo tanto, los datos enumerados pueden ser alterados.

CARATTERISTICHE TECNICHE

technical features

caractéristiques techniques

technische eigenschaften

características técnicas

	NORMA STANDARD	VALORI LIMITI PREVISTI ESTABLISHED LIMITS VALEURS LIMITES PRÉVUES VORGESEHENE GRENZWERTE VALORES LIMITE PREVISTOS	VALORI RILEVATI MEASURED VALUES VALEURS MESUREES MESSWERTE VALOR MEDIDO
Lunghezza e larghezza Lenght and width Longueur et largeur Länge und Breite Longitud y anchura	ISO 10545.2	± 0,6%	± 0,6%
Rettilineità degli spigoli Straightness of sides Rectitude des arêtes Geradlinigkeit der Kanten Rectitud de los cantos	ISO 10545.2	± 0,5%	± 0,5%
Planarità Flatness Planéité Ebenflächigkeit Planeidad	ISO 10545.2	± 0,5%	± 0,5%
Assorbimento d’acqua Water absorption Absorption d’eau Wasseraufnahme Absorción de agua	ISO 10545.3 ASTM C373	< 0,5%	<0,1%
Resistenza agli sbalzi termici Thermal shock Choc thermique Thermoschock Choque termal	ISO 10545.9 ASTM C484	Resistente Resistant Résistant Beständig Resistente	Resistente Resistant Résistant Beständig Resistente
Resistenza agli attacchi chimici Chemical resistance Résistance chimique Chemische Resistenz Resistencia química	ISO 10545.13 ASTM C650	Conforme Complies with the standards Conforme aux normes Anforderungenerf erfüllt Conforme con las normas	Conforme Complies with the standards Conforme aux normes Anforderungenerf erfüllt Conforme con las normas
Resistenza alle macchie Stains Resistance Résistance aux taches Fleckenbeständigkeit Resistencia a las manchas	ISO 10545.14 ASTM CC1378	≥ Classe 3 ≥ Class 3 ≥ Classe 3 ≥ Klasse 3 ≥ Categoria 3	Conforme Complies with the standards Conforme aux normes Anforderungenerf erfüllt Conforme con las normas
Resistenza al gelo Frost resistant Résistant au gel Frostbeständig Resistente a las heladas	ISO 10545.12 ASTM C1026	Conforme Complies with the standards Conforme aux normes Anforderungenerf erfüllt Conforme con las normas	Conforme Complies with the standards Conforme aux normes Anforderungenerf erfüllt Conforme con las normas
Resistenza alla rottura Breaking strenght Résistance à la rupture Biegezugfestigkeit Resistencia a flexión	ISO 10545.4	≥ 28 N/mm ²	45 N/mm ²

TERRA MIA

CREDITS

EDITION

July 2018
© All rights reserved

ART DIRECTION

d-segno studio
di Davide Tonelli
d.tonelli@d-segno.com
linkedin.com/in/davidetonelli/

COMPANY

ORNAMENTA® Headquarter
Via Mosca, 1 - 41049
Sassuolo - (MO) Italia
T. +39 0536 867411
info@ornamenta.com

ORNAMENTA® Production unit
via Stradone Secchia 29,
42014 Roteglia - (RE) Italia
T. +39 0536 867411

COMMUNICATION & PR.

ORNAMENTA Press Office
press@ornamenta.com

ORNAMENTA.COM

ORNAMENTA®

A.D. Davide Tonelli

Art direction

d-segno studio
di Davide Tonelli
d.tonelli@d-segno.com
linkedin.com/in/davidetonelli/

Company

ORNAMENTA® Headquarter
Via Mosca, 1 - 41049
Sassuolo - (MO) Italia
T. +39 0536 867411
F. +39 0536 803937
info@ornamenta.com
IT 00831670369
Gamma Due S.p.A.

ORNAMENTA® Production unit
via Stradone Secchia 29,
42014 Roteglia - (RE) Italia
T. +39 0536 867411

Communication & Pr.

ORNAMENTA Press Office
press@ornamenta.com

ornamenta.com

@ornamentaceramics