

# MATTER

# SLIM

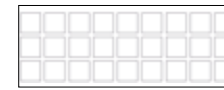
STONE



## FORMATS.FORMATI.FORMATOS



**30X90 natural**  
29,75x89,46 cm - 11.71"x35.22"



**30X90 square**  
29,75x89,46 cm - 11.71"x35.22"

## SPECIAL PIECES.PEZZI SPECIALI.PIEZAS ESPECIALES



**30X30 natural 2,5x2,5**  
29,75x29,75 cm - 11.71"x11.71"

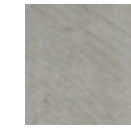
## THICKNESS.SPESSORE.ESPESORES

≡ 0,5 cm approx. / 0.19" approx.

## COLOURS COLORI COLORES

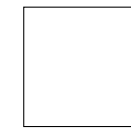


Ivory

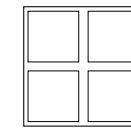


Grey

## FINISHES FINITURI ACABADOS



Natural



Square

# MATTER SLIM **IVORY**

BASE TILES.BASE.BASES

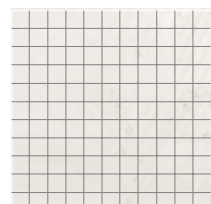


**Matter slim ivory natural**  
29,75x89,46 cm - 11.71"x35.22"  
G-6224



**Matter slim ivory square**  
29,75x89,46 cm - 11.71"x35.22"  
G-6246

SPECIAL PIECES.PEZZI SPECIALI. PIEZAS ESPECIALES



**Matter slim ivory natural  
mosaico 2,5x2,5**  
29,75x29,75 cm - 11.71"x11.71"  
G-6756

COMPLEMENTS.COMPLEMENTI.COMPLEMENTOS



**Fusion graffiato lista 90**  
1,5x89,46 cm - 0.59"x35.22"  
G-5091



Wall: Matter slim ivory square - grey natural 29,75x89,46 cm  
Floor: matter grey lappato 59,55x59,55 cm

# MATTER SLIM GREY

## BASE TILES.BASE.BASES



**Matter slim grey natural**  
29,75x89,46 cm - 11.71"x35.22"  
G-6224



**Matter slim grey square**  
29,75x89,46 cm - 11.71"x35.22"  
G-6246

## SPECIAL PIECES.PEZZI SPECIALI. PIEZAS ESPECIALES

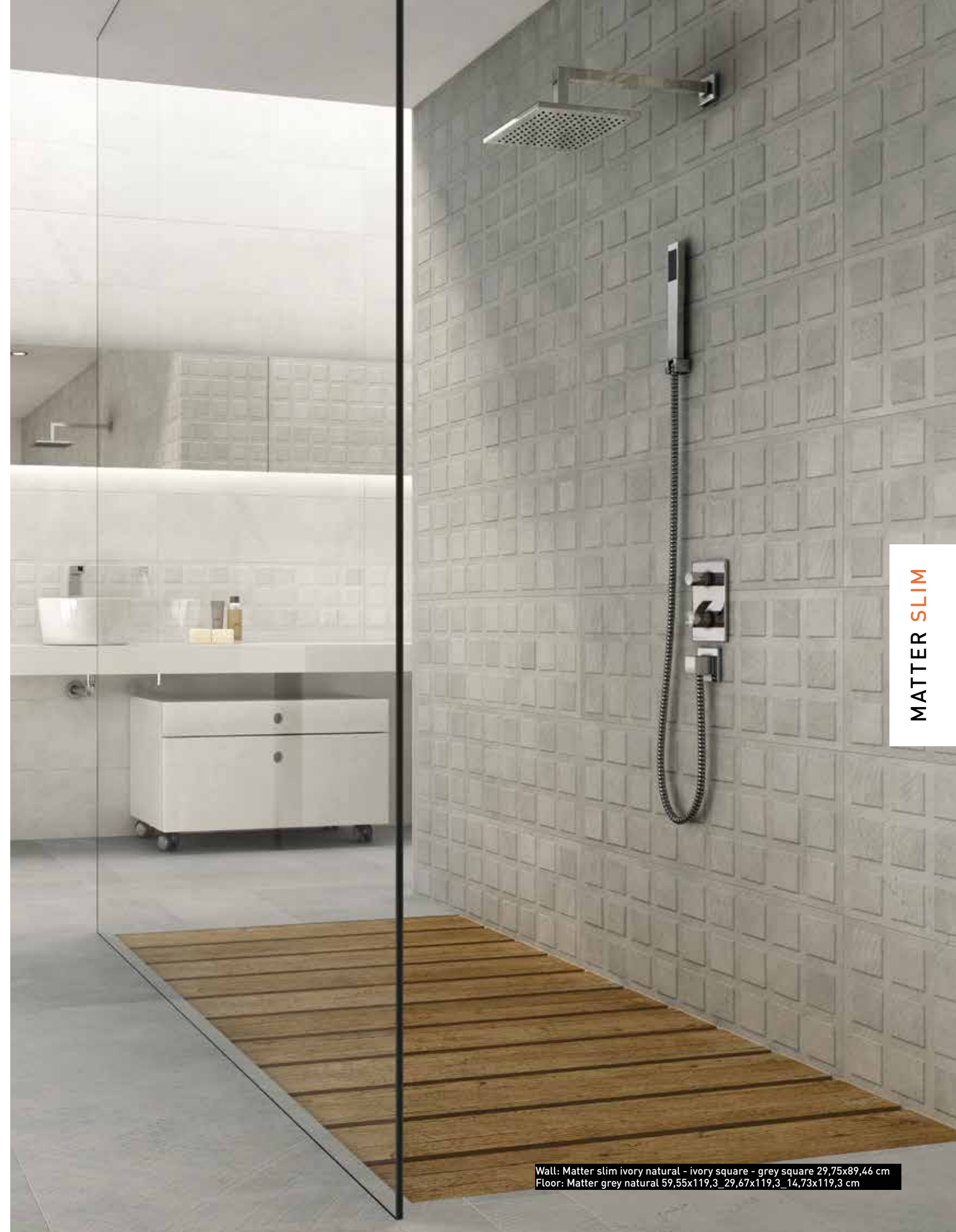


**Matter slim grey natural mosaico 2,5x2,5**  
29,75x29,75 cm - 11.71"x11.71"  
G-6756

## COMPLEMENTS.COMPLEMENTI.COMPLEMENTOS



**Fusion graffiato lista 90**  
1,5x89,46 cm - 0.59"x35.22"  
G-5091



MATTER SLIM

Wall: Matter slim ivory natural - ivory square - grey square 29,75x89,46 cm  
Floor: Matter grey natural 59,55x119,3\_29,67x119,3\_14,73x119,3 cm

## TECHNICAL CHARACTERISTICS.CARATTERISTICHE TECNICHE.CARACTERÍSTICAS TÉCNICAS

MEASUREMENTS AND SURFACES APPEARANCE DIMENSIONI E ASPETTO SUPERFICIALE MEDIDAS Y ASPECTO SUPERFICIAL	STANDARD TEST METHOD METODO DELLA NORMA MÉTODO DE ENSAYO	STANDARD PRESCRIBED VALUES VALORE PRESCRITTO VALORES STANDARD NORMA	<b>Matter Slim*</b>
<b>Length and width.</b> <i>Lunghezza e larghezza.</i> Longitud y anchura. Länge und Breite	ISO 10545-2	± 0,6% max.	± 0,2%
<b>Orthogonality.</b> <i>Ortogonalità.</i> Ortogonalidad. Rechtwinkligkeit	ISO 10545-2	± 0,5% max.	± 0,2%
<b>Straightness of sides.</b> <i>Rettilineità dei lati.</i> Rectitud de lados. Kantengeradigkeit	ISO 10545-2	± 0,5% max.	± 0,2%
<b>Surfaces flatness.</b> <i>Planarità.</i> Planitud. Ebenflächigkeit	ISO 10545-2	± 0,5% max.	± 0,2%

PHYSICAL PROPERTIES PROPIETÀ FISICHE PROPIEDADES FÍSICA			
<b>Water absorption.</b> <i>Assorbimento d'acqua.</i> Absorción de agua. Wasseraufnahme	ISO 10545-3	≤ 0,5%	0,1%
<b>Breaking strength, in N.</b> <i>Carico di rottura, en N.</i> Carga de rotura, en N. Bruchlast, in N	ISO 10545-4	≥ 700 N	Available Method Metodo Disponibile Método Disponible
<b>Modulus of rupture</b> <i>Resistenza alla flessione.</i> Resistencia a la flexión. Biegefestigkeit	ISO 10545-4	≥ 35 N/mm <sup>2</sup>	>40 N/mm <sup>2</sup>
<b>Resistance to thermal shock.</b> <i>Resistenza agli sbalzi termici.</i> Resistencia al choque térmico. Temperaturwechselbeständigkeit	ISO 10545-9	No surface defects should be visible Non deve presentare difetti visibili No debe presentar defectos superficiales visibles	Resistant. Resistente. Resistente
<b>Frost resistance.</b> <i>Resistenza al gelo.</i> Resistencia a la helada. Frostbeständigkeit	ISO 10545-12	No surface defects or cracks should be visible Non deve presentare difetti visibili No debe presentar defectos ni grietas superficiales visibles	Frost Resistant Antighaccio Resistente a la Helada
<b>Coefficient of friction.</b> <i>Resistenza allo scivolamento.</i> Coeficiente de fricción. Rutschfestigkeit	DIN 51130	-	Available Method Metodo Disponibile Método Disponible
<b>Colour resistance to light.</b> <i>Resistenza dei colori alla luce.</i> Resistencia del color a la luz. Lichtbeständigkeit der Farben	DIN 51094	There should be no colour variations Non deve presentare difetti visibili No debe presentar variaciones de color	No alterations in colour and shine Non presenta alterazioni di colori e lucentezza No presenta variaciones de color y brillo

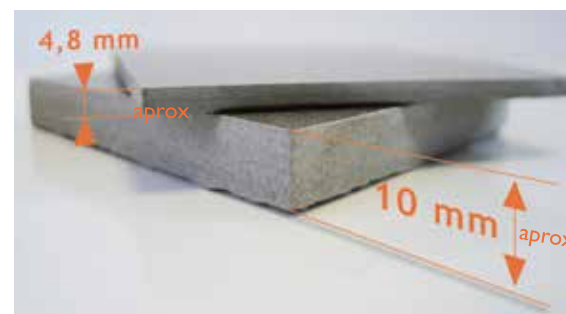
  

CHEMICAL PROPERTIES PROPIETÀ CHIMICHE PROPIEDADES QUÍMICAS			
<b>Chemical resistance.</b> <i>Resistenza agli agenti chimici.</i> Resistencia química. Chemikalienbeständigkeit	ISO 10545-13	Resistance to household cleaning products and swimmingpools salts. Resistencia a productos domésticos y sales para piscinas	Min.GB
<b>Resistance to staining.</b> <i>Resistenza alle macchie.</i> Resistencia a las manchas. Fleckenbeständigkeit	ISO 10545-14	Declared Value Valor Declarado	5

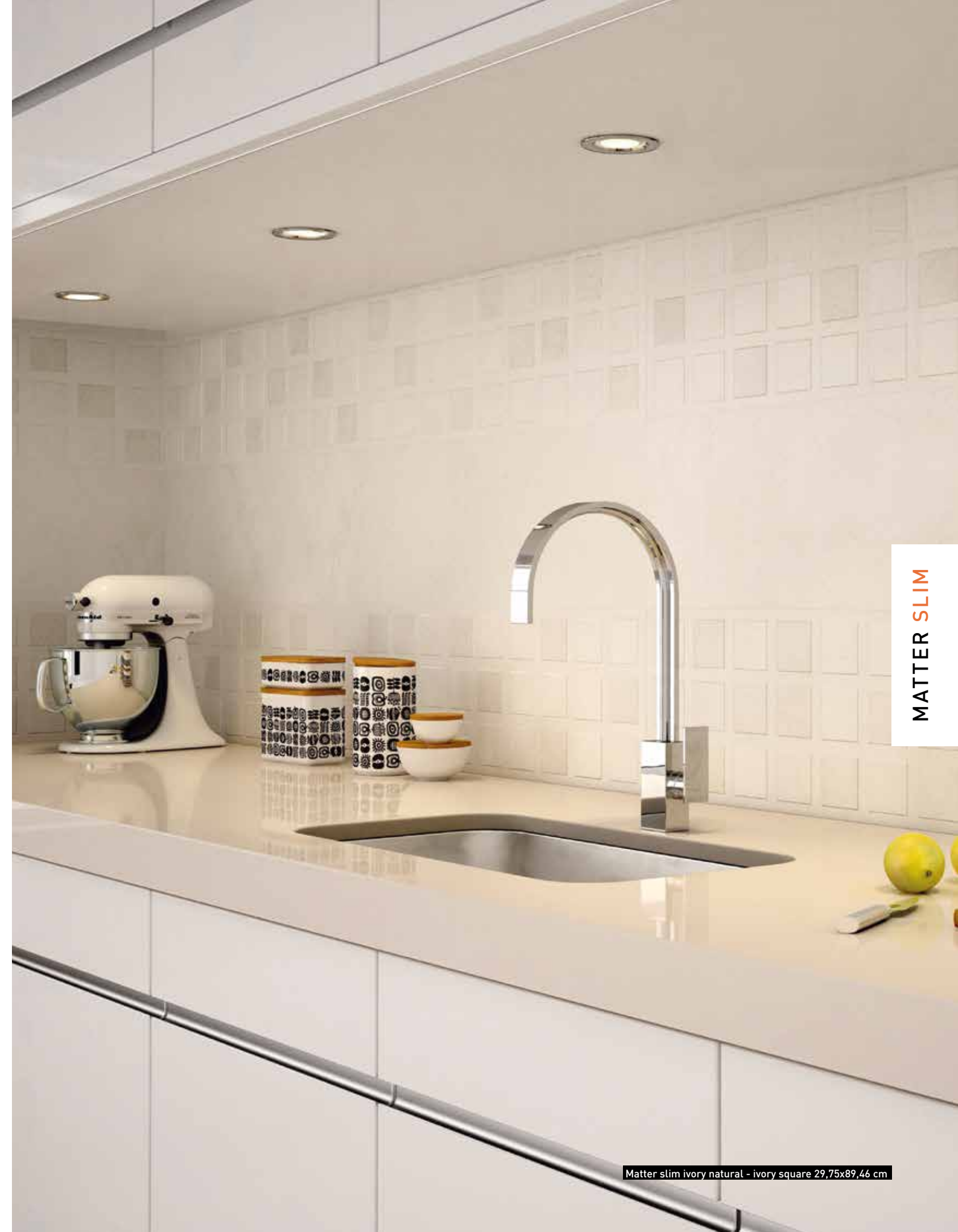
\*The Land values are the average of different production consignments. For further detail information, please check with our commercial network. /  
I valori dichiarati sono ottenuti da una media di prove effettuate su diverse produzioni. Per avere informazioni dettagliate consultare la rete commerciale /  
Los valores declarados son el promedio obtenido a través de ensayos de diferentes producciones. Para la obtención de una información detallada consultar a la red comercial.

## ADVANTAGES.VANTAGGI.VENTAJAS

- Time. *Tempo.* Tiempo
- Money. *Denaro.* Dinero
- Hygiene. *Igiene.* Higiene
- Ecologic. *Ecologia.* Ecología
- Technology. *Tecnologia.* Tecnología



\* Recommended only for wall. /  
sólo recomendado como revestimiento.



MATTER SLIM

Matter slim ivory natural - ivory square 29,75x89,46 cm