

MATTER

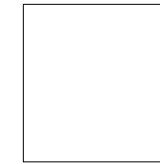
STONE



FORMATS.FORMATI.FORMATOS



60X120
59,55x119,3 cm - 23.45"x46.97"



60X60
59,55x59,55 cm - 23.45"x23.45"



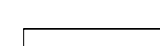
30X120
29,67x119,3 cm - 11.68"x46.97"



30X60
29,75x59,55 cm - 11.71"x23.45"

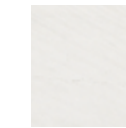


15X120
14,73x119,3 cm - 5.80"x46.97"



7,5X60
7,3x59,55 cm - 2.87"x23.45"

COLOURS COLORI COLORES

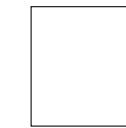


Ivory

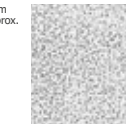


Grey

FINISHES FINITURI ACABADOS

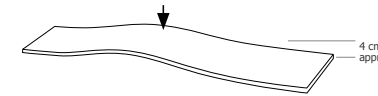


Natural

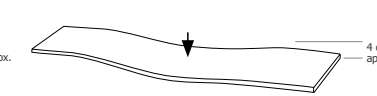


Lappato

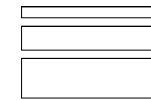
SPECIAL PIECES.PEZZI SPECIALI.PIEZAS ESPECIALES



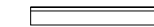
15X120 UP
14,73x118,80 cm - 5.80"x46.77"



15X120 DOWN
14,73x118,80 cm - 5.80"x46.77"



**15X60 - 10X60 - 5X60
multiformat natural***
14,75x59,55 cm - 5.87"x23.45"
9,72x59,55 cm - 3.83"x23.45"
4,84x59,55 cm - 1.90"x23.45"



7,5X60 rodapié
7,3x59,55 cm - 2.87"x23.45"

*The box contains 5 pieces from each of the formats.
*Cada caja contiene 5 piezas de cada formato.



30X30 mosaico 3,5x3,5
29,75x29,75 cm - 11.71"x11.71"



30X30 mosaico 3D 3,5x10
29,75x29,75 cm - 11.71"x11.71"

THICKNESS.SPESSORE.ESPESORES

1,18 cm / 0.46" approx. 60x120 cm / 30x120 cm / 15x120 cm FORMATS
1,03 cm / 0.40" approx. 30x60 cm / 60x60 cm FORMATS

MATTER

MATTER IVORY

lappato **CLASE 2** **R10**** **natural** **CLASE 1** **DCOF>0.42**
UNE - ENV 12633 DIN 51130 UNE - ENV 12633 ANSI A 137.1 - 2012

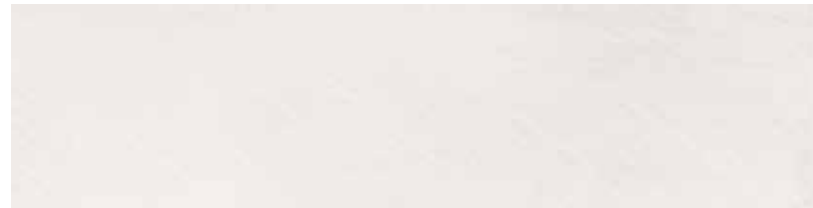
BASE TILES.BASE.BASES



Matter ivory natural
59,55x119,3 cm - 23.45"x46.97"
G-6506



Matter ivory natural / lappato
59,55x59,55 cm - 23.45"x23.45"
G-6286 / G-6330



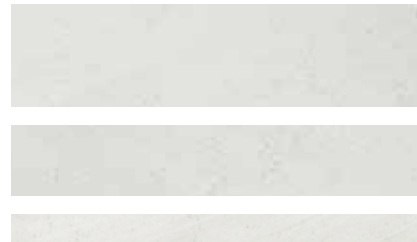
Matter ivory natural
29,75x119,3 cm - 11.68"x46.97"
G-6544



Matter ivory natural
29,75x59,55 cm - 11.71"x23.45"
G-6218



Matter ivory natural
14,73x119,3 cm - 5.80"x46.97"
G-6506



Matter ivory natural multiformat 15x60-10x60-5x60*
14,75x59,55 cm - 5.87"x23.45"
9,72x59,55 cm - 3.83"x23.45"
4,85x59,55 cm - 1.90"x23.45"
G-6298

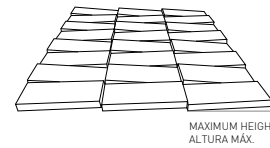
SPECIAL PIECES.PEZZI SPECIALI. PIEZAS ESPECIALES



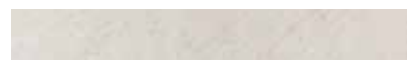
Matter ivory natural mosaico 3D 3,5X10
29,75x29,75 cm - 11.71"x11.71"
G-6756



Matter ivory natural mosaico 3D 3,5X10
29,75x29,75 cm - 11.71"x11.71"
G-5187



*The box contains 5 pieces from each of the formats.
*Cada caja contiene 5 piezas de cada formato.



Matter ivory natural rodapié 60
7,3x59,55 cm - 2.87"x23.45"
G-5097



Matter ivory natural / lappato listelo
7,3x59,55 cm - 2.87"x23.45"
G-5087 / G-5091

STEPS.GRADINI.PELDAÑOS

		natural	lappato
SIMPLE	peldaño simple-30 (30x60 cm)	5171	-
	peldaño simple-60 (30x60 cm)	5171	-
	peldaño simple áng (30x60 cm)	5187	-
	peldaño simple-60 (60x60 cm)	5281	5281
	peldaño simple áng (60x60 cm)	5299	5299
	peldaño simple 120 (30x120 cm)	5519	-
GRADONE		natural	lappato
	peldaño grad-30 (30x60 cm)	5559	-
	peldaño grad-60 (30x60 cm)	5559	-
	peldaño grad. áng (30x60 cm)	5609	-
	peldaño grad-60 (60x60 cm)	5559	5559
	peldaño grad. áng (60x60 cm)	5609	5609
	peldaño grad-120 (30x120 cm)	5795	-
peldaño grad áng (30x120 cm)	5815	-	

** For projects check technical information with our commercial network.

**Per i progetti ottenere informazioni tecniche attraverso la nostra rete commerciale.

** Para proyectos obtenga información técnica a través de nuestra red comercial.



MATTER

Matter ivory natural 59.55x59.55 cm

MATTER GREY

lappato **CLASE 2** R10**
UNE - ENV 12633 DIN 51130

natural **CLASE 1** DCOF>0.42
UNE - ENV 12633 ANSI A 137.1 - 2012

BASE TILES.BASE.BASES



Matter grey natural
59,55x119,3 cm - 23.45"x46.97"
G-6506



Matter grey natural / lappato
59,55x59,55 cm - 23.45"x23.45"
G-6286 / G-6330



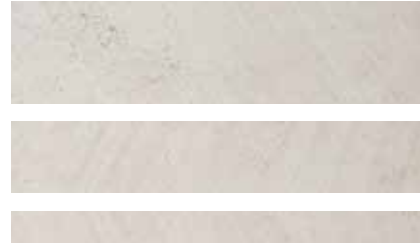
Matter grey natural
29,67x119,3 cm - 11.68"x46.97"
G-6544



Matter grey natural
29,75x59,55 cm - 11.71"x23.45"
G-6218



Matter grey natural
14,73x119,3 cm - 5.80"x46.97"
G-6584



Matter grey natural multiformat 15x60-10x60-5x60*
14,75x59,55 cm - 5.87"x23.45"
9,72x59,55 cm - 3.83"x23.45"
4,85x59,55 cm - 1.90"x23.45"
G-6298

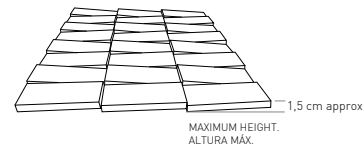
SPECIAL PIECES.PEZZI SPECIALI. PIEZAS ESPECIALES



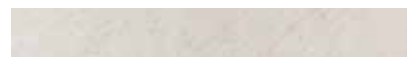
Matter grey natural mosaico 3,5x3,5
29,75x29,75 cm - 11.71"x11.71"
G-6756



Matter grey natural mosaico 3D 3,5x3,5
29,75x29,75 cm - 11.71"x11.71"
G-5187



*The box contains 5 pieces from each of the formats.
*Cada caja contiene 5 piezas de cada formato.



Matter grey natural rodapié 60
7,3x59,55 cm - 2.87"x23.45"
G-5097

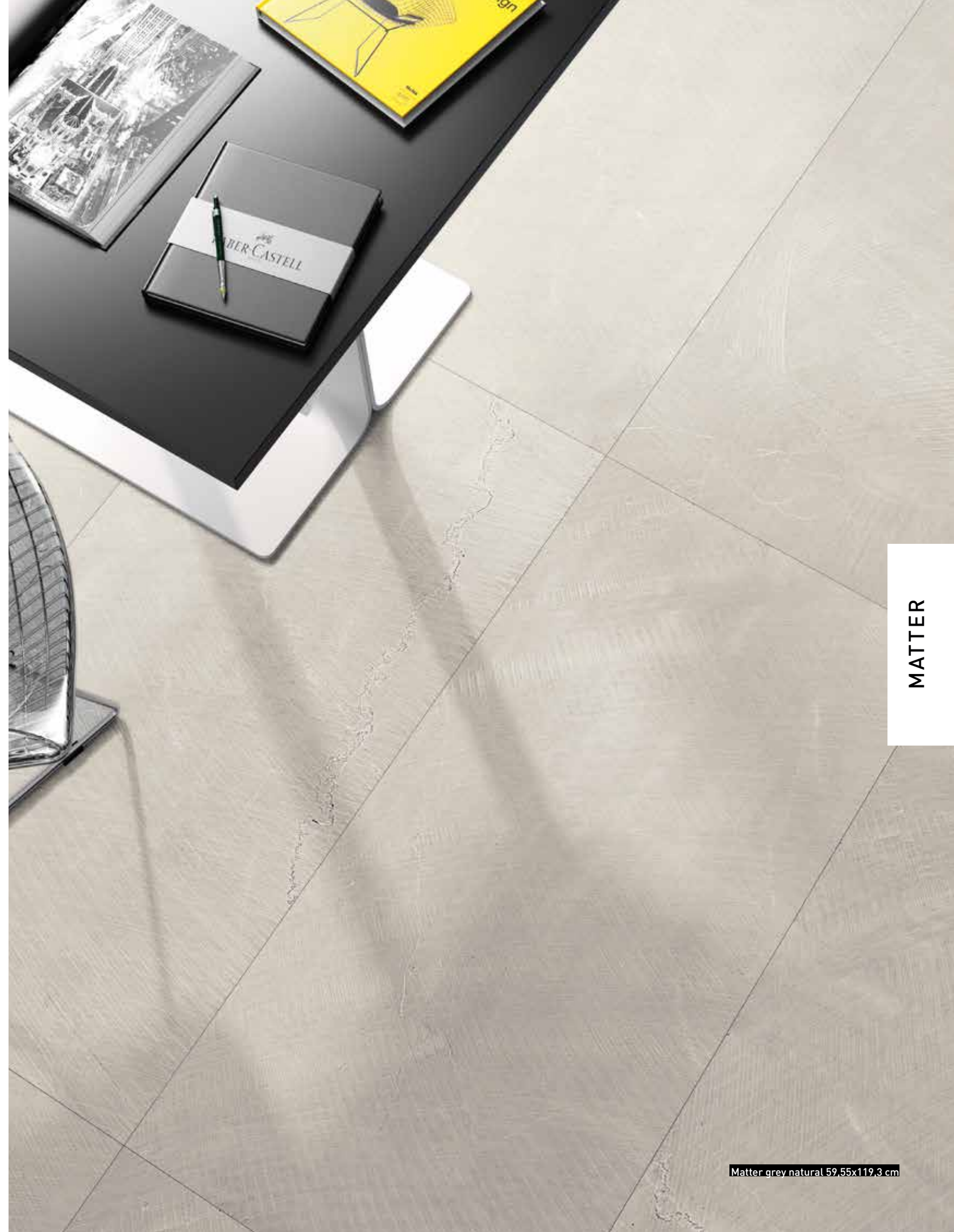


Matter grey natural / lappato listelo
7,3x59,55 cm - 2.87"x23.45"
G-5087 / G-5091

STEPS.GRADINI.PELDAÑOS

		natural	lappato
SIMPLE	peldaño simple-30 (30x60 cm)	5171	-
	peldaño simple-60 (30x60 cm)	5171	-
	peldaño simple áng. (30x60 cm)	5187	-
	peldaño simple-60 (60x60 cm)	5281	5281
	peldaño simple áng. (60x60 cm)	5299	5299
	peldaño simple 120° (30x120 cm)	5519	-
GRADONE	peldaño grad-30 (30x60 cm)	5559	5559
	peldaño grad-60 (30x60 cm)	5559	-
	peldaño grad. áng (30x60 cm)	5609	-
	peldaño grad-60 (60x60 cm)	5559	5559
	peldaño grad. áng (60x60 cm)	5609	5609
	peldaño grad-120 (30x120 cm)	5795	-
	peldaño grad áng (30x120 cm)	5815	-

** For projects check technical information with our commercial network.
** Per i progetti ottenere informazioni tecniche attraverso la nostra rete commerciale.
** Para proyectos obtenga información técnica a través de nuestra red comercial.



MATTER

Matter grey natural 59,55x119,3 cm

TECHNICAL CHARACTERISTICS. CARATTERISTICHE TECNICHE. CARACTERÍSTICAS TÉCNICAS

MEASUREMENTS AND SURFACES APPEARANCE DIMENSIONI E ASPETTO SUPERFICIALE MEDIDAS Y ASPECTO SUPERFICIAL	STANDARD TEST METHOD METODO DELLA NORMA MÉTODO DE ENSAYO	STANDARD PRESCRIBED VALUES VALORE PRESCRITTO VALORES STANDARD NORMA	MATTER collection*
Length and width. <i>Lunghezza e larghezza.</i> Longitud y anchura. Länge und Breite	ISO 10545-2	± 0,6% max.	± 0,2%
Orthogonality. <i>Ortogonalità.</i> Ortogonalidad. Rechtwinkligkeit	ISO 10545-2	± 0,5% max.	± 0,2%
Straightness of sides. <i>Rettilineità dei lati.</i> Rectitud de lados. Kantengeradigkeit	ISO 10545-2	± 0,5% max.	± 0,2%
Surfaces flatness. <i>Planarità.</i> Planitud. Ebenflächigkeit	ISO 10545-2	± 0,5% max.	± 0,2%
PHYSICAL PROPERTIES PROPIETÀ FISICHE PROPIEDADES FÍSICA			
Water absorption. <i>Assorbimento d'acqua.</i> Absorción de agua. Wasseraufnahme	ISO 10545-3	≤ 0,5%	≤ 0,1%
Breaking strength, in N. <i>Carica di rottura, en N.</i> Carga de rotura, en N. Bruchlast, in N	ISO 10545-4	≥ 1300 N	2400 N
Modulus of rupture. <i>Resistenza alla flessione.</i> Resistencia a la flexión. Biegefestigkeit	ISO 10545-4	≥ 35 N/mm ²	56 N/mm ²
Resistance to deep abrasion. <i>Resistenza all'abrasione profonda.</i> Resistencia a la abrasión profunda. Tiefverschleissbeständigkeit	ISO 10545-6	≤ 175 mm ³	115 mm ³
Resistance to thermal shock. <i>Resistenza agli sbalzi termici.</i> Resistencia al choque térmico. Temperaturwechselbeständigkeit	ISO 10545-9	No surface defects should be visible Non deve presentare difetti visibili No debe presentar defectos superficiales visibles	Resistant. Resistente. Resistente
Frost resistance. <i>Resistenza al gelo.</i> Resistencia a la helada. Frostbeständigkeit	ISO 10545-12	No surface defects or cracks should be visible Non deve presentare difetti visibili No debe presentar defectos ni grietas superficiales visibles	Frost resistant Antighiaccio Resistente a la Helada
Coefficient of friction. <i>Resistenza allo scivolamento.</i> Coeficiente de fricción. Rutschfestigkeit	DIN 51130 UNE-ENV 12633 DCOF - ANSIA 137.1	-	R10** (lappato) Clase 1** (natural) Clase 2*** (lappato) >0.42 (natural)
Colour resistance to light. <i>Resistenza dei colori alla luce.</i> Resistencia del color a la luz. Lichtbeständigkeit der Farben	DIN 51094	There should be no colour variations Non deve presentare difetti visibili No debe presentar variaciones de color	No alterations in colour and shine Non presenta alterazioni di colori e lucidità No presenta variaciones de color y brillo
CHEMICAL PROPERTIES PROPIETÀ CHIMICHE PROPIEDADES QUÍMICAS			
Chemical resistance. <i>Resistenza agli agenti chimici.</i> Resistencia química. Chemikalienbeständigkeit	ISO 10545-13	Resistance to household cleaning products and swimmingpools salts. Resistencia a productos de limpieza y sales para piscinas	Min. UB
Resistance to staining. <i>Resistenza alle macchie.</i> Resistencia a las manchas. Fleckenbeständigkeit	ISO 10545-14	Declared Value Valor Declarado	5

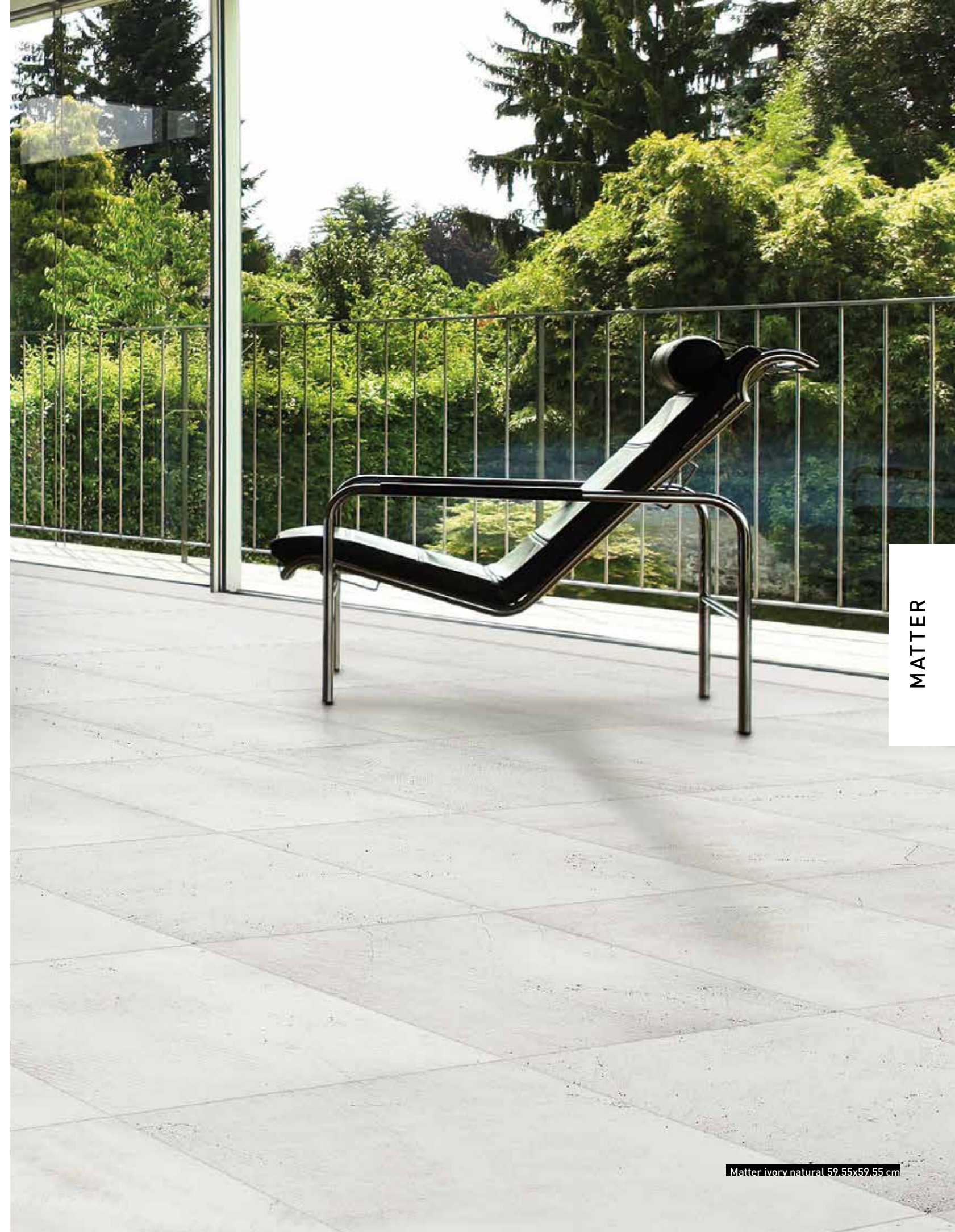
*The Land values are the average of different production consignments. For further detail information, please check with our commercial network.
I valori dichiarati sono ottenuti da una media di prove effettuate su diverse produzioni. Per avere informazioni dettagliate consultare la rete commerciale.
Los valores declarados son el promedio obtenido a través de ensayos de diferentes producciones. Para la obtención de una información detallada consultar a la red comercial.

** R9 Test carried out on Matter Grey Natural 60x60 (Batch 17-10-12). Ensayo realizado sobre el producto Matter Grey Natural 60x60 (Lote 17-10-12)

** Clase 1 - Tested in natural finish (It depends on the consignment). Test realized in internal laboratory / Provare realizzato in laboratorio interno / Ensayo realizado en laboratorio interno.

*** Clase 2 - Tested in lappato finish (It depends on the consignment) Test realized in internal laboratory / Provare realizzato in laboratorio interno / Ensayo realizado en laboratorio interno.

**** Dry Test, according to document DA DB-SUA/3 (Código Técnico de la Edificación) M° de Fomento. Average test result value, on May 2012.
Ensayo realizado, según documento DA DB-SUA/3 (Código Técnico de la edificación) M° de Fomento. Valor medio a fecha Mayo 2012.



MATTER

Matter ivory natural 59,55x59,55 cm