

Blend – 3+ and 5.6mm Gauged Porcelain Tile Panels

Flexible, versatile and inspired by cement, with a special speckled visual effect. Blend reveals remarkably broad-ranging application possibilities, making it ideal for the world of interior design



*Note! These samples depict base color and sheen. Please refer to our website for a more accurate depiction of veining and pattern.
See chart on the next page for further information

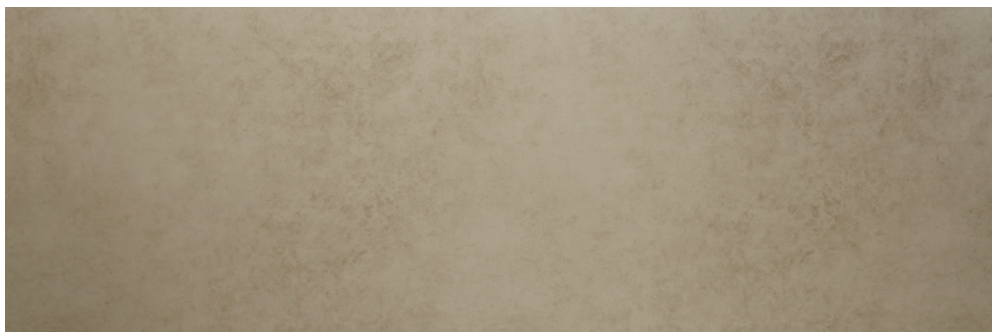
Avorio - L2048 - 3+ (Walls) - **Stocking**

L4538 - 5.6* (Floors & Walls) - **Stocking**



Grigio - L1367 - 3+ (Walls) - **Stocking**

L 3521 - 5.6* (Floors & Walls) - **Stocking**



Noce - L2049 - 3+ (Walls) - **Stocking**

L4743 - 5.6* (Floors & Walls) - **Stocking**



Nero - L1510 - 3+ (Walls) - **Stocking**

L4401 - 5.6* (Floors & Walls) - **Stocking**

Specifications

Laminam 1 meter x 1 meter sheets*

	LAMINAM 3+	LAMINAM 5.6
Piece	10.76 sq. ft./piece	10.76 sq. ft./piece
Carton	3 pc./carton	2 pc./carton
Sq. ft./carton	32.28 sq. ft./carton	21.52 sq. ft./carton
Sq. ft./pallet	1,097.52 sq. ft./pallet	538.0 sq. ft./pallet
Lbs./piece	18.07 lbs./piece	31.27 lbs./piece
Lbs./pallet	1,843.14 lbs./pallet	1,563.50 lbs./pallet
Cartons/pallet	34 cartons/pallet	25 cartons/pallet

Laminam 1 meter x 3 meter sheets*

	LAMINAM 3+	LAMINAM 5.6
Piece	32.29 sq. ft./piece	32.29 sq. ft./piece
Crate	20 pc./crate	13 pc./crate
Sq. ft./crate	645.80 sq. ft./crate	419.77 sq. ft./crate
Lbs./piece	51.66 lbs./piece	93.96 lbs./piece
Lbs./crate	1,285 lbs./crate <i>(includes crate weight)</i>	1,422 lbs./crate <i>(includes crate weight)</i>
Sq. ft. minimum order	32.29 sq. ft.	32.29 sq. ft.

Product Features

- Available in 3+ for wall use and 5.6 for floor and wall use
- Unparalleled testing and training ensures high performance
- Suitable for indoor surfaces

* Laminam arrives in oversize crates. These crates require proper receiving and handling equipment.

Note: Non-full crate orders of 5.6mm Laminam or mixed orders of 3+ and 5.6 mm will arrive on vertical A-frame type crates. These A-frames require the same specialized handling equipment. Please refer to the Laminam technical guide online for receiving and handling information at LaminambyCrossville.com.

Product Codes

Series and Color	Item Codes				Special Order Sizes**	
	3+ 1M3M	3+ 1M1M**	5.6 1M3M	5.6 1M1M**	3+	5.6
Blend Avorio	L2048.1M3M	†	L4538.1M3M	†		x
Blend Grigio	L1367.1M3M	†	L3521.1M3M	†		x
Blend Nero	L1510.1M3M	†	L4401.1M3M	†		x
Blend Noce	L2049.1M3M	†	L4743.1M3M	†		x

† Please Contact Customer Service for lead times and availability.

** Special Order Items are only sold in full crate quantities.



Laminam 3+
Blend_Avorio
Collection_Notte



Laminam 3+
Blend_Nero
Architects: Kelly Architect
(George Kelly and Jen Smith)

About Laminam[®] by Crossville[®]

Laminam, a brand which stands for innovative materials and unique technology, is the leader in large format porcelain panel production. Revolutionary technology concentrates three square meters into unbelievably thin porcelain: 3+ for interior walls and 5.6 for interior floors. Versatile and flexible, it is a genuine skin for contemporary architecture, and is ideal in a host of applications.

Capable of anticipating lifestyle trends, accommodating the needs of design, and participating in the dialog of global architecture, Laminam and Crossville Inc. have joined together to bring Laminam[®] by Crossville[®] to the U.S. marketplace. Large format porcelain panels for interior walls and flooring— together, creativity is limitless.

Applications

Laminam[®] is suitable for many indoor applications:

BUILDING SECTOR

Floor and wall coverings, partition and storage walls, false ceilings, surface finishes and restoration, insulated panels and tunnels.

INTERIOR DESIGN

Surfaces of kitchen and bathroom tops, cupboards, tables, desks, doors and furnishings in general.

SHIPBUILDING SECTOR

The lightness and high technical properties of Laminam make it suitable for walls of cruise ships and sports crafts.

COMPOSITE AND STRUCTURAL PANELS

The slabs can be placed on top of each other or over other materials to create extremely light and particularly resistant composite and structural panels suitable in all those cases that require high resistance and reduced weight load on the surface.

Technical Specifications

LAMINAM 3+ and 5.6mm

Laminam porcelain obtained by wet grinding of clayish raw materials, granite and metamorphic feldspar-containing rocks and ceramic pigments. Compacted by a special shaping in compactor and sintering at 1200°C, with hybrid firing.

Technical Info

LAMINAM 3+

Laminam 3+ is made up of the basic slab with the structure reinforced with fiberglass matting applied on the back using special adhesive.

Thickness: 3mm plus .5mm fiberglass mesh.

Use of Laminam 3+

- Interior wall covering applied using adhesive

LAMINAM 5.6mm

- Interior floors below, and slab on interior floors above grade concrete and interior and exterior wall coverings. (See Laminam Technical Guide for more information).

- **Polished finishes require a penetrating sealer prior to grouting. Please Note: Due to DCOF value, these tile panels are not recommended for applications in wet areas or areas where standing water may occur.**

- **Due to the grooved texture, when rail cutting Laminam Satori Beige, Crossville[®] recommends scoring face down.**

Environmental Statement

Laminam is a dynamic, flexible and rapidly growing company that makes recycling and sustainability its duty.

The revolutionary slab produced by Laminam does not neglect environmental friendliness: natural raw materials, sustainable technology, entirely recyclable products are at the heart of the company's green philosophy. Laminam is associated with the Green Building Council: created with natural materials, the slab does not release any substance into the environment and unbacked can be easily milled and recycled in other production cycles. Laminam slabs are produced adopting sustainable technology which respects the entire ecosystem and is designed to reduce processing waste to a minimum and to limit the use of resources. The use of hybrid kilns that combine gas and electricity significantly reduces CO2 emissions in the atmosphere. Thanks to its large format Laminam optimizes the transport, thus reducing the emission of particulate matter which is harmful for the environment.

Moreover, Laminam has recently completed its own photovoltaic roof, a plant that today has already produced 1 GWh of energy and that in one year is expected to produce an estimated 1.387 GWh, therefore reducing the CO2 emission by 617 tons in the atmosphere and allowing Laminam to produce 15% of its energy requirements.

Distinctive Values

MAIN FEATURES

Dimensions 1000x3000mm

Perfectly Flat

3+: 52 lbs / pc

5.6: 94 lbs / pc

CHEMICAL RESISTANCE

Laminam resists organic and inorganic solvents, disinfectants and detergents. It can be easily cleaned without affecting its surface characteristics; the only product that can attack the slabs is hydrofluoric acid.

WEAR RESISTANCE

Laminam is highly scratch proof and resistant to deep abrasion. The properties of the slabs remain unchanged even after intensive use and frequent cleaning.

HIGH FLEXURAL STRENGTH

Laminam has a high modulus of rupture. 3+ is 90 MOR and 5.6 is 50 MOR which are high values. Typical porcelain value is 35-37.

FROST RESISTANCE

Laminam's average water absorption is 0.1% therefore it is frost resistant and suitable for any weather condition.

FIRE RESISTANT

Laminam does not contain organic material therefore it is resistant to fire and high temperatures. In the event of fire it does not release smoke or toxic substances.

CHROMATIC PROPERTIES

Laminam does not contain organic pigments and is resistant to UV rays. Even if subjected to severe climate changes, the colors remain stable.

GRAFFITI

Laminam is a graffiti resistant ceramic surface; it is easy to clean and even the strongest paints can be removed.

SUSTAINABLE

- The use of hybrid kilns that combine gas and electricity significantly reduces CO2 emissions in the atmosphere
- Laminam has led the way to a photovoltaic system being installed on the roofs of its two Fiorano Modenese plants
- Over a year, this photovoltaic system guarantees the production of around 1,050 GWh, thereby enabling the company to produce 10% of its energy requirements
- In terms of CO2 reduction, Laminam's photovoltaic roof system eliminates the release of 525 tons of CO2 into the atmosphere annually
- Member of the Green Building Council Italia, this Italian association of manufacturing leaders strive to transform the building market towards environmental sustainability and to build livable communities. Partners of GBC Italia promote environmental, economic and social responsibility by innovating the way in which buildings are designed, built and used.

Information listed here is subject to change. Please refer to LaminambyCrossville.com for the latest, most accurate information.