

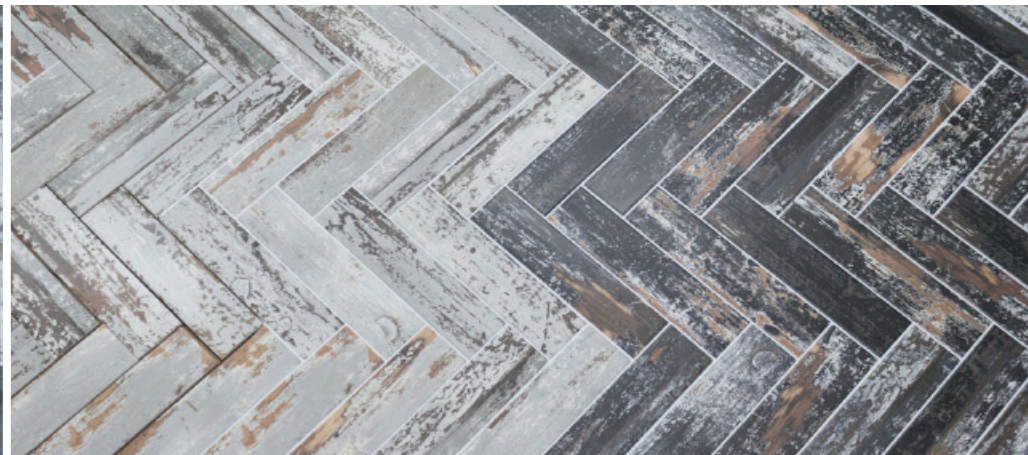
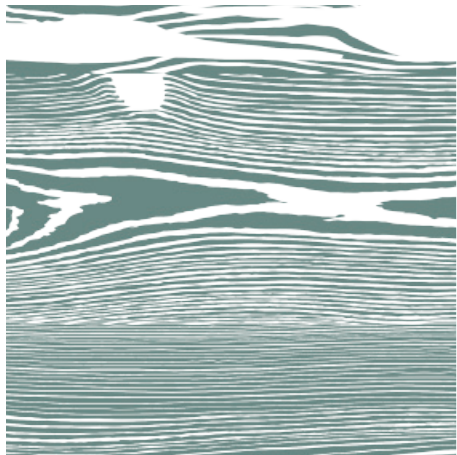
# Woodlands

*collection*  
6,3x25,5





**Woodlands**  
*collection*



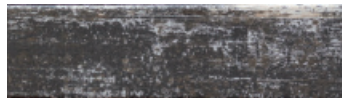




WoodLands White  
LB25  
6,3x25,5



WoodLands Grey  
LB25  
6,3x25,5



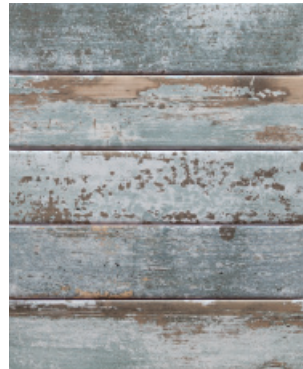
WoodLands Black  
LB25  
6,3x25,5



WoodLands Pink  
LB25  
6,3x25,5



WoodLands Blue  
LB25  
6,3x25,5



WoodLands Green  
LB25  
6,3x25,5











## Características Técnicas.

Technical characteristics. Caractéristiques techniques. Technische Eigenschaften. технические характеристики.

UNE-EN-ISO 10545-3 Absorción de agua Water absorption	UNE-EN-ISO 10545-11 Resistencia al cuarteo Crazing resistance	UNE-EN-ISO 10545-13 Resistencia química Chemical resistance	UNE-EN-ISO 10545-14 Resistencia a las manchas Stain resistance
>0,5% <10%	OK	GHA	5

DIN 51130: 2014-02 Resistencia al deslizamiento Slip resistance	UNE-EN-ISO 10545-7 Resistencia a la abrasión superficial Resistance to surface abrasion
R10	PEI4

## Simbología.

Symbolism. Symbologie. Symbole. СИМВОЛЫ.



**Revestimiento**  
Wall tiles  
Faïences murales  
Wandfliesen  
Настенная плитка



**Mate**  
Matt  
Mate  
Matt  
Матовая



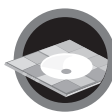
**Pavimento**  
Floor tiles  
Revêtement de sol  
Bodenfliesen  
Напольная плитка



**Porcelánico**  
Porcelain Tiles  
Grès Cérame Émaillé  
Feinsteinzeugfliesen  
Керамогранит



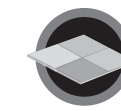
**Destonificado**  
Shade variation  
Nuancé  
Farbabweichungen  
Неоднородно тонированная



**Si encimeras**  
Ok kitchen worktops  
Bon pour plan de travail  
Geeignet fuer  
Geeignet für  
Küchenarbeitsplatten  
Для столешниц



**Junta Recomendada**  
Recommended joint  
Joint recommandé  
Empfehlen Befugung  
Рекомендуемая ширина шва



**No repetitivo**  
Non repetitive  
Non répétitif  
Keine wiederholung  
Не повторяющийся

## Packing list.

Packing list. Воiтage. Packliste. ПАКИНГ ЛИСТ



Base



6,3x25,5 / 2,52"x10,2"



76



19,35



1,22



56



60



Polígono Pullman, C/ Hungría nº18  
12006 Castellón, Spain  
Tel: +34 964 244 178 / Fax: +34 964 212 631

e-mail: [cevica@cevica.es](mailto:cevica@cevica.es)  
[www.cevica.es](http://www.cevica.es)

