



R I G A

[the meanings of a line]
a concept by Massimo Nadalini

Material.	Glazed porcelain rectified
Sizes.	90x90 - 45x90 - 22,5x90 - 7,5x30
Thicknesses.	10 mm - 7 mm (size 7,5x30)
Finish.	Natural
Colours.	Cloud, Clay, Dove, Coffee
Accessories.	Items available
Application.	Inside - Outside / Floor - Wall





Ho sempre pensato che le sfide più interessanti partano dal rispetto di vincoli.

Ho scelto di concentrarmi su un unico pensiero molto semplice e ricercarne la ricchezza e la complessità.

Con RIGA ho cercato di indagare il significato di questo termine su una superficie artigianale.

RIGA diventa quindi texture di una piastra da pavimento o rivestimento che attraverso un bassorilievo imperfetto esprime la sua matericità.

Riga è una barra incisa manualmente che si trasforma in sequenza infinita di segmenti irregolari.

RIGA è il segno che lo stucco lascia nelle incisioni della barra.

RIGA, infine, è un sistema di relazioni infinite tra moduli di materia e stucco.

I have always thought that the most interesting challenges start from compliance with bonds.

I chose to focus on a single very simple concept and seek its richness and complexity.

With RIGA I tried to investigate the meaning of this word applied to a handcrafted surface.

RIGA becomes the texture for a floor or wall surface that expresses its meaning through an imperfect relief.

RIGA is a manually engraved board repeating an infinite sequence of uneven segments.

RIGA is the mark left on the board by the plaster.

RIGA is a system of unlimited relations between shapes and matter.

Massimo Nadalini

Glazed porcelain rectified

R I G A

[the meanings of a line]

a concept by Massimo Nadalini

02 /

CLAY

08 /

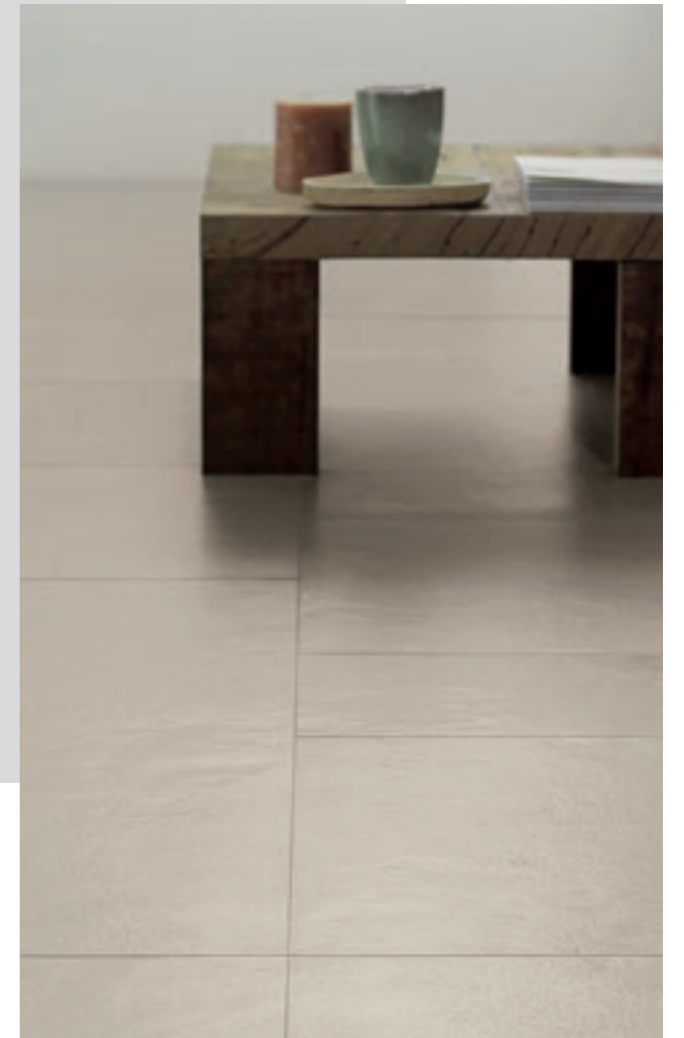
DOVE

10 /

COFFEE

12 /

CLOUD



CLAY



RIGA è disponibile in:

4 varianti colore

3 formati "Smooth"
(90x90 - 45x90 - 22,5x90)

2 formati "Track"
(90x90 - 45x90)

3 listelli "Small"
preincisi (7,5x30),
stuccabili tono su tono
o a contrasto dove lo
stucco si trasforma in
una cucitura cromatica.

RIGA is available in:

4 colors

3 "Smooth" sizes
(90x90 - 45x90 - 22,5x90)

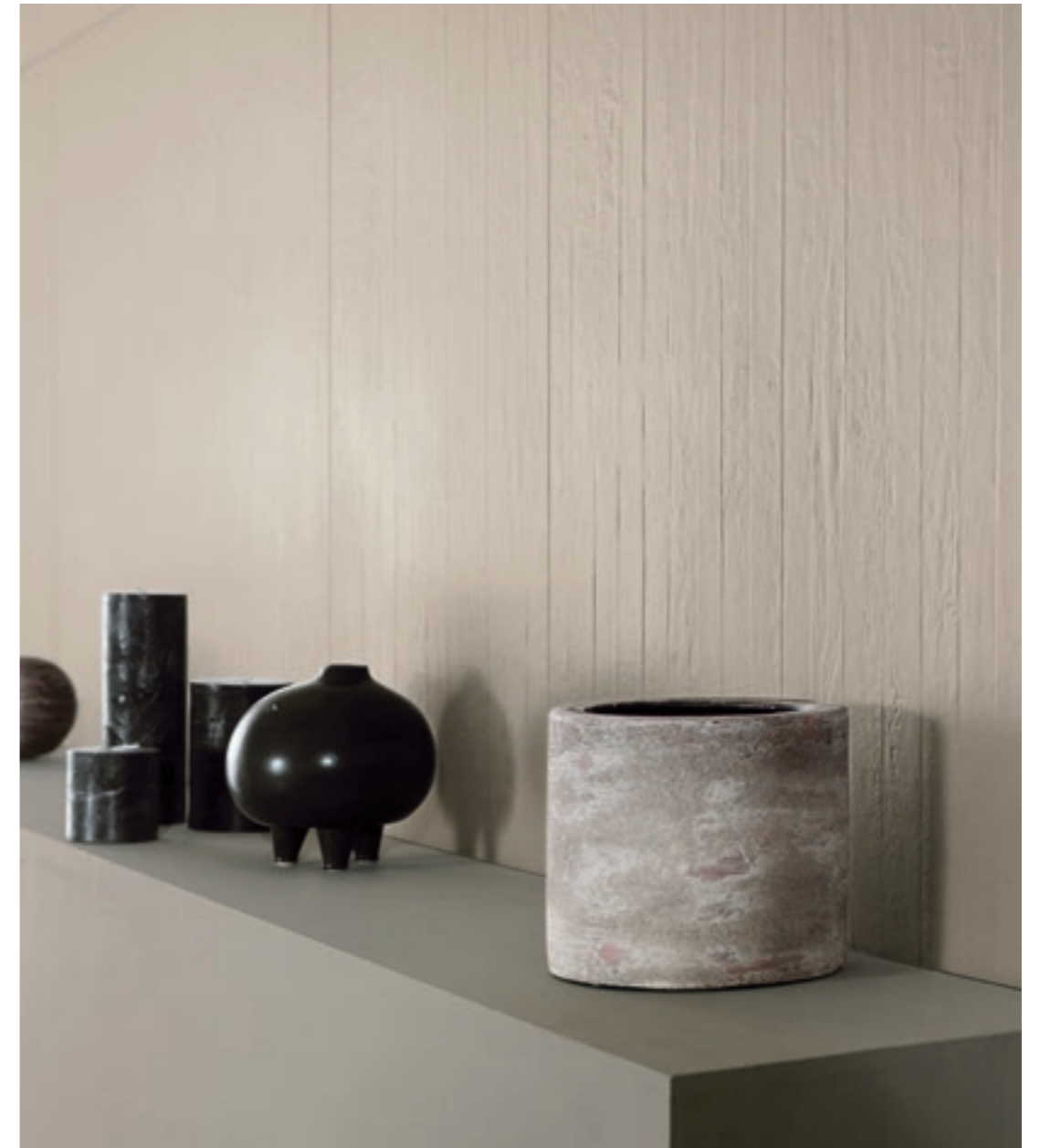
2 "Track" sizes
(90x90 - 45x90)

3 "Small" pre-engraved li-
stels (7,5x30) that can be
grouted tone on tone or in
contrast, making the grout
a chromatic decorative
element.

> Wall / Track Clay 90x90 + Track Clay 45x90
√ Floor / Smooth Clay 90x90 + Smooth Clay 45x90 + Smooth Clay 22,5x90



√ Floor / Smooth Clay 90x90 + Smooth Clay 45x90 + Smooth Clay 22,5x90



> Wall / Track Clay 90x90 + Track Clay 45x90





> Wall / Small Dove 7,5x30
Smooth Cloud 22,5x90
v Floor / Smooth Cloud 45x90 + Smooth Cloud 22,5x90

DOVE

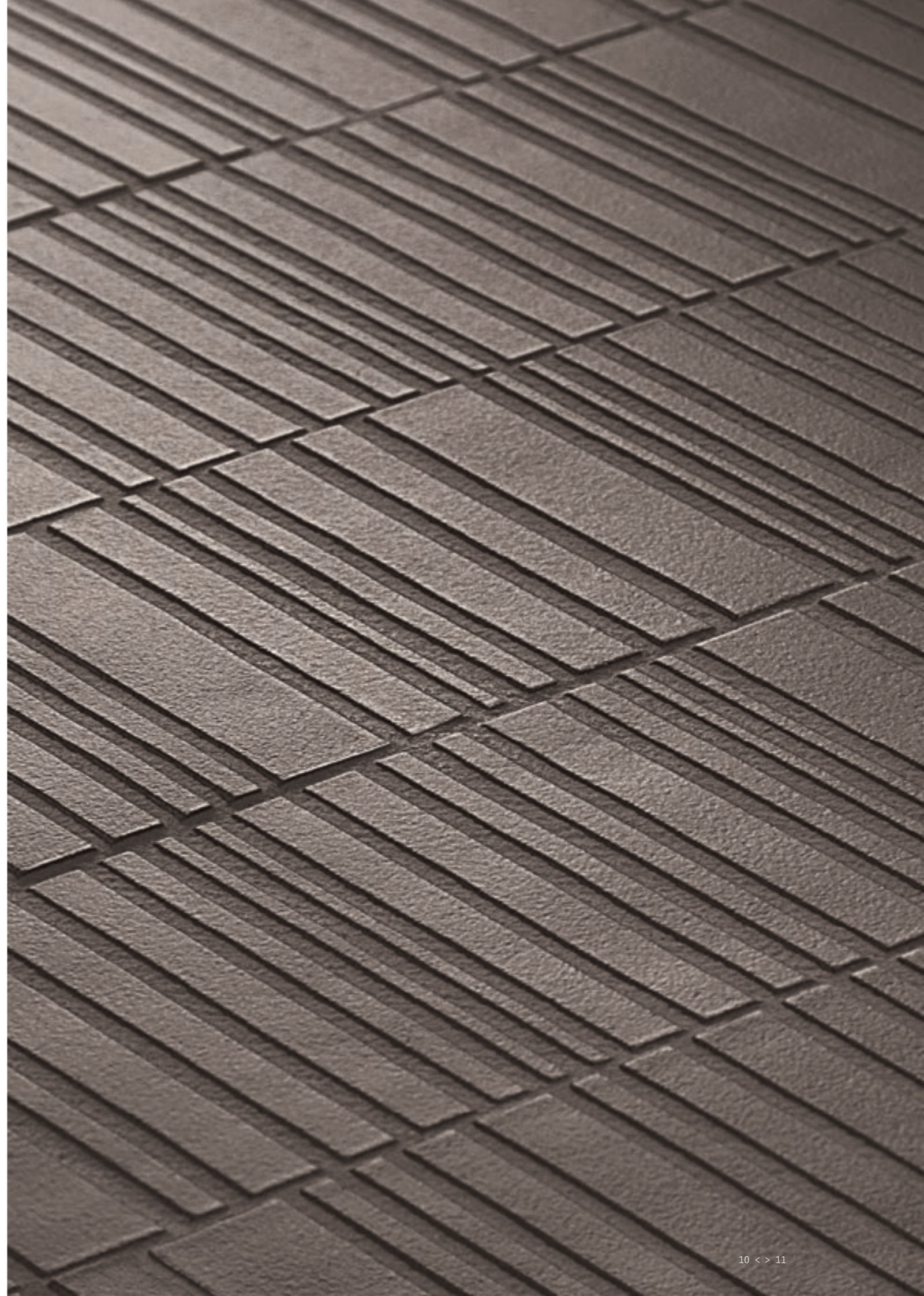


> Wall / Small Dove 7,5x30
Smooth Cloud 22,5x90

COFFEE



> Wall / Small Coffee 7,5x30



CLOUD



> Wall / Track Cloud 45x90
Small Cloud 7,5x30
v Floor / Smooth Cloud 90x90



√ Floor / Smooth Cloud 45x90 + Smooth Cloud 22,5x90



> Wall / Small Cloud 7,5x30

BOARDS

CLOUD



1 **RIGA TRACK**
Cloud 90x90

2 **RIGA SMOOTH**
Cloud 22,5x90

3 **RIGA SMALL**
Coffee 7,5x30

4 **RIGA SMALL**
Dove 7,5x30

5 **RIGA SMALL**
Cloud 7,5x30

CLAY



1 **RIGA SMOOTH**
Clay 90x90

2 **RIGA SMOOTH**
Clay 22,5x90

3 **RIGA SMALL**
Dove 7,5x30

4 **RIGA SMALL**
Cloud 7,5x30

DOVE



1 **RIGA TRACK**
Dove 90x90

2 **RIGA SMOOTH**
Dove 45x90

3 **RIGA SMALL**
Cloud 7,5x30

4 **RIGA SMALL**
Dove 7,5x30

COFFEE



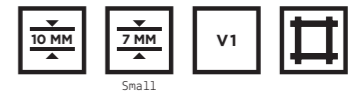
1 **RIGA SMOOTH**
Coffee 45x90

2 **RIGA TRACK**
Coffee 45x90

3 **RIGA SMALL**
Cloud 7,5x30

4 **RIGA SMALL**
Coffee 7,5x30

R I G A



CLOUD

SMOOTH



53 118001 Smooth
Cloud 90x90



53 118101 Smooth
Cloud 45x90



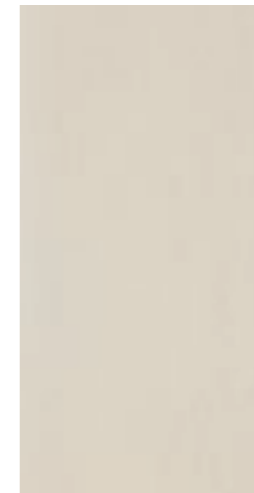
65 118201 Smooth
Cloud 22,5x90

CLAY

SMOOTH



53 118002 Smooth
Clay 90x90



53 118102 Smooth
Clay 45x90



65 118202 Smooth
Clay 22,5x90

TRACK



53 118011 Track
Cloud 90x90



53 118111 Track
Cloud 45x90

TRACK



53 118012 Track
Clay 90x90



53 118112 Track
Clay 45x90

ODD



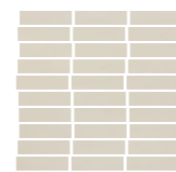
85 11841- Odd
Cloud 3x9,8
su rete 30x31,8

SMALL



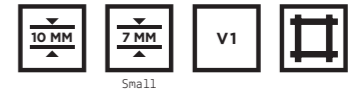
71 118022 Small
Cloud 7,5x30

ODD



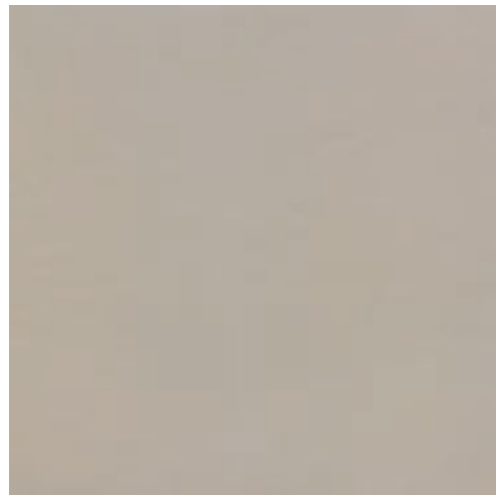
85 11842- Odd
Clay 3x9,8
su rete 30x31,8

R I G A

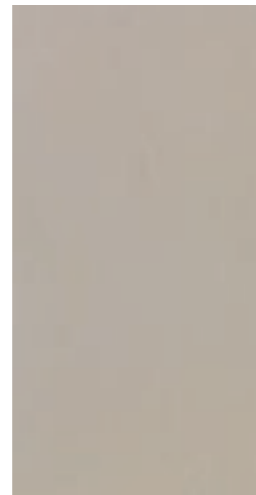


DOVE

SMOOTH



53 **118003** Smooth
Dove 90x90



53 **118103** Smooth
Dove 45x90



65 **118203** Smooth
Dove 22,5x90

COFFEE

SMOOTH



53 **118004** Smooth
Coffee 90x90



53 **118104** Smooth
Coffee 45x90



65 **118204** Smooth
Coffee 22,5x90

TRACK

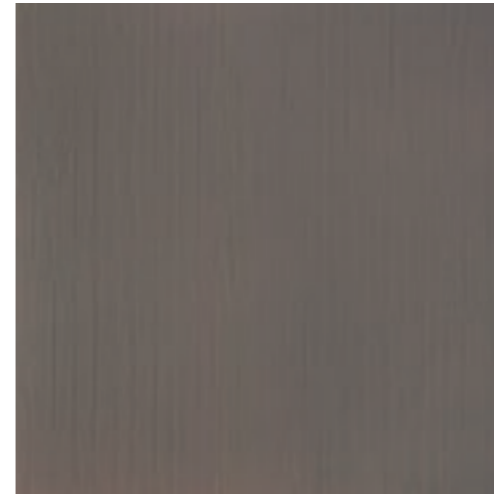


53 **118013** Track
Dove 90x90



53 **118113** Track
Dove 45x90

TRACK



53 **118014** Track
Coffee 90x90



53 **118114** Track
Coffee 45x90

ODD



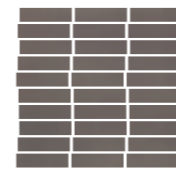
85 **11843-** Odd
Dove 3x9,8
su rete 30x31,8

SMALL



71 **118023** Small
Dove 7,5x30

ODD



85 **11844-** Odd
Coffee 3x9,8
su rete 30x31,8

SMALL



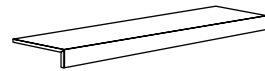
71 **118024** Small
Coffee 7,5x30

PEZZI SPECIALI

Special pieces / Pièces spéciales / Sonderstücke / Специальные изделия



70 Battiscopa 6,1x90
11831- Cloud
11832- Clay
11833- Dove
11834- Coffee



80 Elemento a L 30x90x5
11821- Cloud
11822- Clay
11823- Dove
11824- Coffee

IMBALLI

Packaging / Emballages / Verpackungen / Упаковка

	Mq/Box	Pcs/Box	Kg/Box	Mq/Pallet	Box/Pallet	Kg/Pallet
Fondo Smooth 90x90 - 36"x36"	1,62	2	35,00	32,40	20	700,00
Fondo Smooth 45x90 - 18"x36"	1,22	3	27,95	39,04	32	894,40
Fondo Track 90x90 - 36"x36"	1,62	2	35,00	32,40	20	700,00
Fondo Track 45x90 - 18"x36"	1,22	3	27,95	39,04	32	894,40
Fondo Smooth 22,5x90 - 9"x36"	1,22	6	27,95	43,92	36	1006,20
Fondo Small 7,5x30 - 3"x12"	0,61	27	9,25	43,92	72	666,00
Mosaico Odd 3x9,8 - 1"x4" su rete 30x31,8 - 12"x12,5"	0,57	6	12,40	19,38	34	421,60
Battiscopa 6,1x90 - 2,4"x36"	6,30 ml	7	8,40			
Elemento a L 30x90x5 - 12"x36"x2"		1	15,60			

CARATTERISTICHE TECNICHE

Technical features / Caracteristiques techniques / Technische Eigenschaften / Технические характеристики

UNI EN ISO 14411 BIa A. G GL	Metodo di prova Testing method Teste d'essai Pruefmethode Методика испытаний	Valore Value Valeur Wert Величина
Assorbimento acqua Water absorption Absorption d'eau Wasseraufnahme Водопоглощение	ISO 10545.3	< 0,5 %
Resistenza alla flessione Bending strength Résistance à la flexion Biegezugfestigkeit Стойкость к изгибу	ISO 10545.4	Conforme
Resistenza all'attacco chimico Chemical resistance Résistance à l'attaque chimique Beständigkeit gegen Chemikalien Стойкость к химическому воздействию	ISO 10545.13	A
Resistenza alle macchie Stain resistance Résistance aux taches Fleckenbeständigkeit Стойкость к образованию пятен	ISO 10545.14	5
Anti scivolosità Anti-slip index Coefficient anti-dérapage Trittsicherheitskoeffizient Характеристики устойчивости к скольжению	DIN 51130 DIN 51097 ANSI A 137.1:2012	R10 A >0,42 wet
Resistenza all'abrasione Resistance to abrasion Résistance à l'abrasion Abriebhärte Стойкость к истиранию	ISO 10545.7	PEI IV
Determinazione della resistenza al gelo Frost resistance index Coefficient de résistance au gel Feststellung der Frostbeständigkeit Определение морозостойкости	ISO 10545.12	Ingelivo Frost proof Ingelif Frostsicher Морозостойкая

CREDITS

AD / Massimo Nadalini
 PHOTO / Studio Contact

SETTECENTOSTUDIO

Ceramiche Settecento Valtresinaro S.p.A.

Via del Crociale, 21 - 41042 Fiorano Modenese (MO)

Tel. +39 0536 928711 - Fax +39 0536 928718

www.settecento.com - e-mail: info@settecento.com